

Technical Data Sheet

Purified Mouse Anti-Paxillin

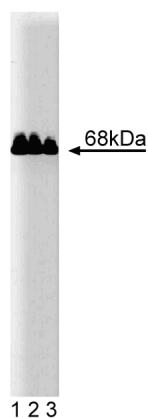
Product Information

Material Number:	610619
Size:	50 µg
Concentration:	250 µg/ml
Clone:	165/Paxillin
Immunogen:	Chicken Paxillin aa. 1-557
Isotype:	Mouse IgG1
Reactivity:	QC Testing: Human Tested in Development: Dog, Rat, Mouse, Chicken
Target MW:	68 kDa
Storage Buffer:	Aqueous buffered solution containing BSA, glycerol, and ≤0.09% sodium azide.

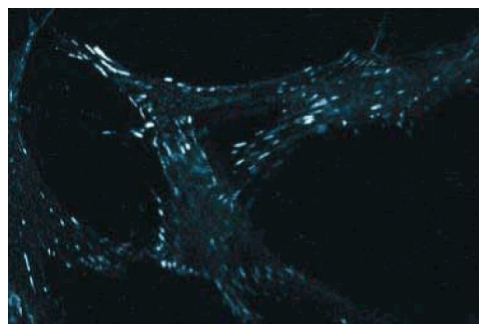
Description

Paxillin, a focal adhesion protein, is a substrate for several tyrosine kinases such as src, FAK, and p120BRC/ABL. The tyrosine phosphorylation of paxillin is affected by conditions that change cell-cell adhesion. This is consistent with the possibility that paxillin is involved in the regulation of cell morphology. Additionally, because of its SH3 binding domain, paxillin associates tightly with FAK and Crk in an extracellular matrix-independent manner. Paxillin was initially detected in fibroblasts, and its phosphorylation may be important during neurite extension during differentiation.

This antibody is routinely tested by western blot analysis. Other applications were tested at BD Biosciences Pharmingen during antibody development only or reported in the literature.



Western blot analysis of Paxillin on human endothelial cell lysate. Lane 1: 1:1000, lane 2: 1:2000, lane 3: 1:4000 dilution of anti-Paxillin.



Immunofluorescent staining of WI38 cells with anti-paxillin.

Preparation and Storage

The monoclonal antibody was purified from tissue culture supernatant or ascites by affinity chromatography. Store undiluted at -20° C.

BD Biosciences

www.bdbiosciences.com

United States	Canada	Europe	Japan	Asia Pacific	Latin America/Caribbean
877.232.8995	888.259.0187	32.53.720.550	0120.8555.90	65.6861.0633	55.11.5185.9995

For country-specific contact information, visit www.bdbiosciences.com/how_to_order/

Conditions: The information disclosed herein is not to be construed as a recommendation to use the above product in violation of any patents. BD Biosciences will not be held responsible for patent infringement or other violations that may occur with the use of our products. Purchase does not include or carry any right to resell or transfer this product either as a stand-alone product or as a component of another product. Any use of this product other than the permitted use without the express written authorization of Becton Dickinson and Company is strictly prohibited.

For Research Use Only. Not for use in diagnostic or therapeutic procedures. Not for resale.

BD, BD Logo and all other trademarks are the property of Becton, Dickinson and Company. ©2007 BD



Application Notes

Application

Western blot	Routinely Tested
Immunoprecipitation	Tested During Development
Immunofluorescence	Tested During Development
Immunohistochemistry	Not Recommended

Suggested Companion Products

Catalog Number	Name	Size	Clone
611450	Human Endothelial Cell Lysate	500 µg	(none)
554002	HRP Goat Anti-Mouse Ig	1.0 ml	(none)
554001	FITC Goat Anti-Mouse Ig	0.5 mg	Polyclonal

Product Notices

1. Since applications vary, each investigator should titrate the reagent to obtain optimal results.
2. Please refer to www.bdbiosciences.com/pharmingen/protocols for technical protocols.
3. Source of all serum proteins is from USDA inspected abattoirs located in the United States.
4. Caution: Sodium azide yields highly toxic hydrazoic acid under acidic conditions. Dilute azide compounds in running water before discarding to avoid accumulation of potentially explosive deposits in plumbing.

References

Herreros L, Rodriguez-Fernandez JL, Brown MC. Paxillin localizes to the lymphocyte microtubule organizing center and associates with the microtubule cytoskeleton. *J Biol Chem.* 1995; 270(34):5039-5047.(Clone-specific: Immunofluorescence)
Laukaitis CM, Webb DJ, Donais K, Horwitz AF. Differential dynamics of alpha 5 integrin, paxillin, and alpha-actinin during formation and disassembly of adhesions in migrating cells. *J Cell Biol.* 2001; 153(7):1427-1440.(Clone-specific: Immunofluorescence)
Muller G, Jung C, Wied S, Welte S, Jordan H, Frick W. Redistribution of glycolipid raft domain components induces insulin-mimetic signaling in rat adipocytes. *Mol Cell Biol.* 2001; 21(14):4553-4567.(Clone-specific: Western blot)
Salgia R, Li JL, Lo SH, et al. Molecular cloning of human paxillin, a focal adhesion protein phosphorylated by P210BCR/ABL. *J Biol Chem.* 1995; 270(10):5039-5047.(Biology)
Turner CE, Glenney JR Jr, Burridge K. Paxillin: a new vinculin-binding protein present in focal adhesions. *J Cell Biol.* 1990; 111(3):1059-1068.(Biology)

BD Biosciences

www.bdbiosciences.com

United States 877.232.8995 Canada 888.259.0187 Europe 32.53.720.550 Japan 0120.8555.90 Asia Pacific 65.6861.0633 Latin America/Caribbean 55.11.5185.9995

For country-specific contact information, visit www.bdbiosciences.com/how_to_order/

Conditions: The information disclosed herein is not to be construed as a recommendation to use the above product in violation of any patents. BD Biosciences will not be held responsible for patent infringement or other violations that may occur with the use of our products. Purchase does not include or carry any right to resell or transfer this product either as a stand-alone product or as a component of another product. Any use of this product other than the permitted use without the express written authorization of Becton Dickinson and Company is strictly prohibited.

For Research Use Only. Not for use in diagnostic or therapeutic procedures. Not for resale.

BD, BD Logo and all other trademarks are the property of Becton, Dickinson and Company. ©2007 BD

