

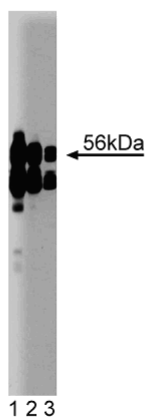
Technical Data Sheet

Purified Mouse Anti-B56 α **Product Information**

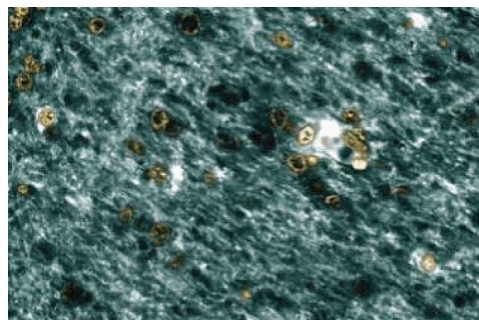
Material Number:	610615
Size:	50 μ g
Concentration:	250 μ g/ml
Clone:	23/B56 α
Immunogen:	Human B56 α aa. 1-162
Isotype:	Mouse IgG1
Reactivity:	QC Testing: Rat Tested in Development: Chicken, Dog, Frog, Mouse, Human
Target MW:	56 kDa
Storage Buffer:	Aqueous buffered solution containing BSA, glycerol, and $\leq 0.09\%$ sodium azide.

Description

Reversible phosphorylation by protein kinases and phosphatases regulates key signaling pathways in eukaryotic cells. Type 2A protein phosphatases (PP2A) are composed of two regulatory and one catalytic subunit. The active PP2A is a heterotrimer, composed of A, B, and C subunits, each encoded by different genes. B56 is a new gene family that encodes α , β , and γ proteins for the B subunit. The three B56 isoforms are approximately 70% homologous to each other and more divergent within the first 251 amino acids. While the α subunit is widely expressed, the γ isoform is most abundant in heart and muscle, and the β subunit is found predominantly in brain tissue. Availability of different B subunits appears to be a key determinant in the protein substrate specificity for PP2A and could influence the subcellular distribution of the holoenzyme.



Western blot analysis of B56 α on rat brain lysate. Lane 1: 1:5000, lane 2: 1:10000, lane 3: 1:20000 dilution of B56 α .



Rabbit Brain

Preparation and Storage

The monoclonal antibody was purified from tissue culture supernatant or ascites by affinity chromatography. Store undiluted at -20°C .

BD Biosciences

bdbiosciences.com

United States	Canada	Europe	Japan	Asia Pacific	Latin America/Caribbean
877.232.8995	888.259.0187	32.53.720.550	0120.8555.90	65.6861.0633	55.11.5185.9995

For country-specific contact information, visit bdbiosciences.com/how_to_order/

Conditions: The information disclosed herein is not to be construed as a recommendation to use the above product in violation of any patents. BD Biosciences will not be held responsible for patent infringement or other violations that may occur with the use of our products. Purchase does not include or carry any right to resell or transfer this product either as a stand-alone product or as a component of another product. Any use of this product other than the permitted use without the express written authorization of Becton Dickinson and Company is strictly prohibited.

For Research Use Only. Not for use in diagnostic or therapeutic procedures. Not for resale.

BD, BD Logo and all other trademarks are the property of Becton, Dickinson and Company. ©2008 BD



Application Notes

Application

Western blot	Routinely Tested
Immunofluorescence	Tested During Development
Immunohistochemistry	Tested During Development
Immunoprecipitation	Not Recommended

Product Notices

1. Since applications vary, each investigator should titrate the reagent to obtain optimal results.
2. Please refer to www.bdbiosciences.com/pharmingen/protocols for technical protocols.
3. Caution: Sodium azide yields highly toxic hydrazoic acid under acidic conditions. Dilute azide compounds in running water before discarding to avoid accumulation of potentially explosive deposits in plumbing.
4. Source of all serum proteins is from USDA inspected abattoirs located in the United States.

References

McCright B, Virshup DM. Identification of a new family of protein phosphatase 2A regulatory subunits. *J Biol Chem*. 1995; 270(44):26123-26128.(Biology)