

Technical Data Sheet

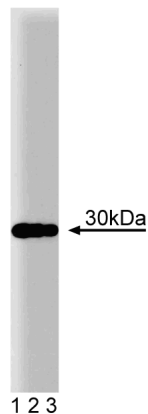
Purified Mouse Anti-EB1**Product Information**

Material Number:	610534
Size:	50 µg
Concentration:	250 µg/ml
Clone:	5/EB1
Immunogen:	Human EB1 aa. 107-268
Isotype:	Mouse IgG1
Reactivity:	QC Testing: Human Tested in Development: Chicken, Mouse, Rat
Target MW:	30 kDa
Storage Buffer:	Aqueous buffered solution containing BSA, glycerol, and ≤0.09% sodium azide.

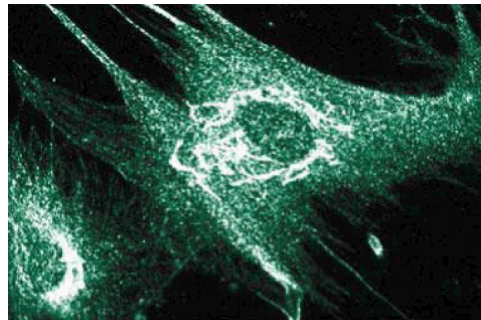
Description

Familial adenomatous polyposis is an autosomal inherited disease characterized by mutations in the APC (adenomatous polyposis coli) gene. Individuals with this disease are predisposed to colorectal polyps and cancer. It has been proposed that disruption of the APC gene plays a role in the disease. APC is a large coiled-coil protein that interacts, via its carboxy terminus, with catenins and with the protein, EB1. This 30 kDa protein was discovered as a result of its strong binding to the C-terminal domain of APC. Like the APC-binding proteins β-Catenin and pp120Cas, EB1 may play an essential role in modulating APC activity and tumorigenesis.

This antibody is routinely tested by western blot analysis. Other applications were tested at BD Biosciences Pharmingen during antibody development only or reported in the literature.



Western blot analysis of EB1 on a human endothelial cell lysate. Lane 1: 1:500, lane 2: 1:1000, lane 3: 1:2000 dilution of the anti-EB1 antibody.



Immunofluorescence staining of human intestinal smooth muscle cells (HISM).

Preparation and Storage

Store undiluted at -20° C.

The monoclonal antibody was purified from tissue culture supernatant or ascites by affinity chromatography.

BD Biosciences

bdbiosciences.com

United States	Canada	Europe	Japan	Asia Pacific	Latin America/Caribbean
877.232.8995	888.259.0187	32.53.720.550	0120.8555.90	65.6861.0633	55.11.5185.9995

For country-specific contact information, visit bdbiosciences.com/how_to_order/

Conditions: The information disclosed herein is not to be construed as a recommendation to use the above product in violation of any patents. BD Biosciences will not be held responsible for patent infringement or other violations that may occur with the use of our products. Purchase does not include or carry any right to resell or transfer this product either as a stand-alone product or as a component of another product. Any use of this product other than the permitted use without the express written authorization of Becton Dickinson and Company is strictly prohibited.

For Research Use Only. Not for use in diagnostic or therapeutic procedures. Not for resale.

BD, BD Logo and all other trademarks are the property of Becton, Dickinson and Company. ©2006 BD



BD

BD Biosciences

Application Notes

Application

Western blot	Routinely Tested
Immunofluorescence	Tested During Development
Immunohistochemistry-paraffin	Tested During Development
Immunoprecipitation	Not Recommended

Suggested Companion Products

<u>Catalog Number</u>	<u>Name</u>	<u>Size</u>	<u>Clone</u>
611450	Human Endothelial Cell Lysate	500 µg	(none)
554002	HRP Goat Anti-Mouse Igs	1.0 ml	(none)
554001	FITC Goat Anti-Mouse Igs	0.5 mg	Polyclonal

Product Notices

1. Since applications vary, each investigator should titrate the reagent to obtain optimal results.
2. Please refer to www.bdbiosciences.com/pharming/en/protocols for technical protocols.
3. Caution: Sodium azide yields highly toxic hydrazoic acid under acidic conditions. Dilute azide compounds in running water before discarding to avoid accumulation of potentially explosive deposits in plumbing.
4. Source of all serum proteins is from USDA inspected abattoirs located in the United States.

References

Askham JM, Vaughan KT, Goodson HV, Morrison EE. Evidence that an interaction between EB1 and p150(Glued) is required for the formation and maintenance of a radial microtubule array anchored at the centrosome. *Mol Biol Cell*. 2002; 13(10):3627-3645.(Biology: Immunofluorescence, Western blot)

Etienne-Manneville S, Hall A. Cdc42 regulates GSK-3beta and adenomatous polyposis coli to control cell polarity. *Nature*. 2003; 421(6924):753-756.(Biology: Immunofluorescence)

Komarova YA, Akhmanova AS, Kojima S, Gajart N, Borisy GG. Cytoplasmic linker proteins promote microtubule rescue in vivo. *J Cell Biol*. 2002; 159(4):589-599. (Biology: Immunofluorescence, Western blot)

Mamane Y, Grandvaux N, Hernandez E, et al. Repression of IRF-4 target genes in human T cell leukemia virus-1 infection. *Nature*. 2002; 21(44):6751-6765. (Biology: Western blot)

Su SL, Huang IP, Fair WR, Powell CT, Heston WD. Alternatively spliced variants of prostate-specific membrane antigen RNA: ratio of expression as a potential measurement of progression. *Cancer Res*. 1995; 55(7):2972-2977.(Biology)