

Technical Data Sheet

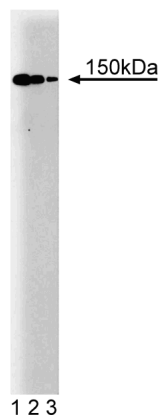
Purified Mouse Anti-p150 [Glued]**Product Information**

Material Number:	610473
Size:	50 µg
Concentration:	250 µg/ml
Clone:	1/p150Glued
Immunogen:	Rat p150 [Glued] aa. 3-202
Isotype:	Mouse IgG1
Reactivity:	QC Testing: Human Tested in Development: Chicken, Dog, Mouse, Rat
Target MW:	150 kDa
Storage Buffer:	Aqueous buffered solution containing BSA, glycerol, and ≤0.09% sodium azide.

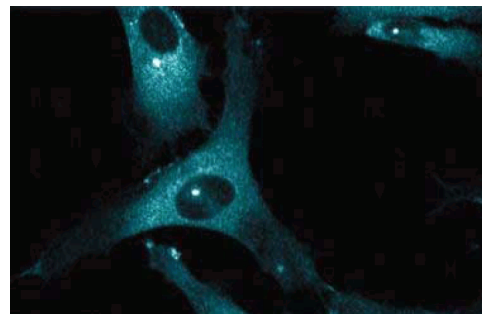
Description

p150 [Glued] was identified as a polypeptide associated with cytoplasmic dynein, the minus-end-directed microtubule-based motor protein. p150 [Glued] is also a member of the oligomeric dynactin complex. Dynactin mediates dynein-driven vesicle motility, as well as lower eukaryote nuclear transport. p150 [Glued] bears significant homology to the product of the *Glued* gene in *Drosophila*. It has been shown *in vitro* to be a required activator of dynein-mediated transport along microtubules. The p150 [Glued] component of the dynactin complex binds to microtubules and the actin-like protein Centractin (Arp-1), another member of the dynactin complex. In the developing rat, p150 [Glued] is expressed at high levels in neural tissue. Microtubule bindings assays with selected constructs of p150 [Glued] indicate that amino acids 39-150 are required for microtubule association.

This antibody is routinely tested by western blot analysis. Other applications were tested at BD Biosciences Pharmingen during antibody development only or reported in the literature.



Western blot analysis of p150 [Glued] on a human endothelial cell lysate. Lane 1: 1:250, lane 2: 1:500, lane 3: 1:1000 dilution of the anti- p150 [Glued] antibody.



Immunofluorescent staining of human endothelial cells.

Preparation and Storage

Store undiluted at -20° C.

The monoclonal antibody was purified from tissue culture supernatant or ascites by affinity chromatography.

BD Biosciences

bdbiosciences.com

United States	Canada	Europe	Japan	Asia Pacific	Latin America/Caribbean
877.232.8995	888.259.0187	32.53.720.550	0120.8555.90	65.6861.0633	55.11.5185.9995

For country-specific contact information, visit bdbiosciences.com/how_to_order/

Conditions: The information disclosed herein is not to be construed as a recommendation to use the above product in violation of any patents. BD Biosciences will not be held responsible for patent infringement or other violations that may occur with the use of our products. Purchase does not include or carry any right to resell or transfer this product either as a stand-alone product or as a component of another product. Any use of this product other than the permitted use without the express written authorization of Becton Dickinson and Company is strictly prohibited.

For Research Use Only. Not for use in diagnostic or therapeutic procedures. Not for resale.

BD, BD Logo and all other trademarks are the property of Becton, Dickinson and Company. ©2006 BD

Application Notes

Application

Western blot	Routinely Tested
Immunohistochemistry-zinc-fixed	Tested During Development
Immunofluorescence	Tested During Development
Immunoprecipitation	Tested During Development

Suggested Companion Products

Catalog Number	Name	Size	Clone
611450	Human Endothelial Cell Lysate	500 µg	(none)
554002	HRP Goat Anti-Mouse Igs	1.0 ml	(none)
554001	FITC Goat Anti-Mouse Igs	0.5 mg	Polyclonal

Product Notices

1. Since applications vary, each investigator should titrate the reagent to obtain optimal results.
2. Please refer to www.bdbiosciences.com/pharmingen/protocols for technical protocols.
3. Caution: Sodium azide yields highly toxic hydrazoic acid under acidic conditions. Dilute azide compounds in running water before discarding to avoid accumulation of potentially explosive deposits in plumbing.
4. Source of all serum proteins is from USDA inspected abattoirs located in the United States.

References

Askham JM, Vaughan KT, Goodson HV, Morrison EE. Evidence that an interaction between EB1 and p150(Glued) is required for the formation and maintenance of a radial microtubule array anchored at the centrosome. *Mol Biol Cell*. 2002; 13(10):3627-3645.(Clone-specific: Immunofluorescence, Western blot)

Aumais JP, Tunstead JR, McNeil RS, et al. NudC associates with Lis1 and the dynein motor at the leading pole of neurons. *J Neurosci*. 2001; 21(24):RC187:1-RC187:7.(Clone-specific: Immunofluorescence)

King SJ, Schroer TA. Dynactin increases the processivity of the cytoplasmic dynein motor. *Nat Cell Biol*. 2000; 2(1):20-24.(Clone-specific)

Kurzchalia T. Anthrax toxin rafts into cells. *J Cell Biol*. 2003; 160(3):295-296.(Clone-specific)

Tai AW, Chuang JZ, Sung CH. Cytoplasmic dynein regulation by subunit heterogeneity and its role in apical transport. *J Cell Biol*. 2001; 153(7):1499-1509. (Clone-specific: Immunofluorescence, Western blot)