

Technical Data Sheet

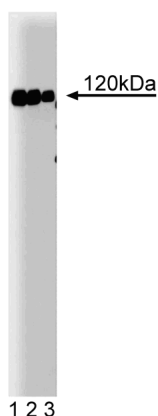
Purified Mouse Anti-c-Cbl

Product Information

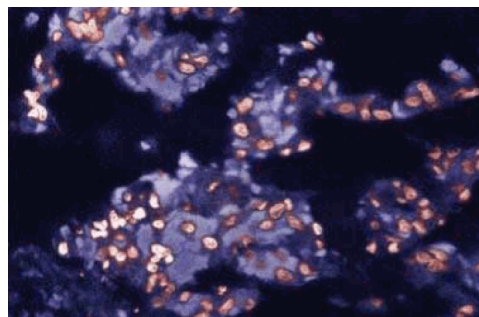
Material Number:	610441
Size:	50 µg
Concentration:	250 µg/ml
Clone:	17/c-Cbl
Immunogen:	Human c-Cbl aa. 595-810
Isotype:	Mouse IgG1
Reactivity:	QC Testing: Human Tested in Development: Dog, Rat, Mouse, Chicken
Target MW:	120 kDa
Storage Buffer:	Aqueous buffered solution containing BSA, glycerol, and ≤0.09% sodium azide.

Description

cbl was identified in the genome of a transforming retrovirus from a mouse pre-B cell lymphoma. The product of mammalian *c-cbl*, p120[cbl], is a widely expressed cytoplasmic protein with several distinctive domains including a RING finger motif and a large proline-rich domain. Although the normal cellular function of c-Cbl has not yet been determined, it associates with many well known signal transduction proteins. In lymphoid cells, c-Cbl is a substrate of TCR-activated protein tyrosine kinases. In addition, stimulation with EGF, PDGF, FGF, or NGF results in tyrosine-phosphorylation of c-Cbl in lymphoid and other cell types. It forms a signaling complex with Grb2 in T cells and is a SH3 and SH2 binding protein which associates with many other cytoplasmic signaling proteins including Btk, Src, fyn, lck, and the β isoform of PI-3 kinase. Thus, c-Cbl may be an important adaptor protein in growth factor and T-cell receptor signaling pathways.



Western blot analysis of c-Cbl on Jurkat lysate. Lane 1: 1:5000, lane 2: 1:10000, lane 3: 1:20000 dilution of anti-c-Cbl.



Immunohistochemical staining of Rabbit Lung tissue with anti-c-cbl antibody.

Preparation and Storage

The monoclonal antibody was purified from tissue culture supernatant or ascites by affinity chromatography. Store undiluted at -20°C.

Application Notes

Application

Western blot	Routinely Tested
Immunofluorescence	Tested During Development
Immunohistochemistry	Tested During Development
Immunoprecipitation	Tested During Development

BD Biosciences

bdbiosciences.com

United States	Canada	Europe	Japan	Asia Pacific	Latin America/Caribbean
877.232.8995	800.979.9408	32.53.720.550	0120.8555.90	65.6861.0633	55.11.5185.9995

For country contact information, visit bdbiosciences.com/contact

Conditions: The information disclosed herein is not to be construed as a recommendation to use the above product in violation of any patents. BD Biosciences will not be held responsible for patent infringement or other violations that may occur with the use of our products. Purchase does not include or carry any right to resell or transfer this product either as a stand-alone product or as a component of another product. Any use of this product other than the permitted use without the express written authorization of Becton, Dickinson and Company is strictly prohibited.

For Research Use Only. Not for use in diagnostic or therapeutic procedures. Not for resale.

Unless otherwise noted, BD, BD Logo and all other trademarks are property of Becton, Dickinson and Company. © 2011 BD



Suggested Companion Products

Catalog Number	Name	Size	Clone
611451	Jurkat Cell Lysate	500 µg	(none)
554002	HRP Goat Anti-Mouse Ig	1.0 ml	(none)
554001	FITC Goat Anti-Mouse Ig	0.5 mg	Polyclonal

Product Notices

1. Since applications vary, each investigator should titrate the reagent to obtain optimal results.
2. Please refer to www.bdbiosciences.com/pharmingen/protocols for technical protocols.
3. Source of all serum proteins is from USDA inspected abattoirs located in the United States.
4. Caution: Sodium azide yields highly toxic hydrazoic acid under acidic conditions. Dilute azide compounds in running water before discarding to avoid accumulation of potentially explosive deposits in plumbing.
5. Sodium azide is a reversible inhibitor of oxidative metabolism; therefore, antibody preparations containing this preservative agent must not be used in cell cultures nor injected into animals. Sodium azide may be removed by washing stained cells or plate-bound antibody or dialyzing soluble antibody in sodium azide-free buffer. Since endotoxin may also affect the results of functional studies, we recommend the NA/LE (No Azide/Low Endotoxin) antibody format, if available, for in vitro and in vivo use.

References

Burke P, Schooler K, Wiley HS. Regulation of epidermal growth factor receptor signaling by endocytosis and intracellular trafficking. *Mol Cell Biol.* 2001; 12(6):1897-1910. (Clone-specific: Western blot)

Donovan JA, Wange RL, Langdon WY, Samelson LE. The protein product of the c-cbl protooncogene is the 120-kDa tyrosine-phosphorylated protein in Jurkat cells activated via the T cell antigen receptor. *J Biol Chem.* 1994; 269(37):22921-22924. (Biology)

Garcia GG, Miller RA. Single-cell analyses reveal two defects in peptide-specific activation of naive T cells from aged mice. *J Immunol.* 2001; 166(5):3151-3157. (Clone-specific: Immunofluorescence)

Jiang X, Huang F, Marusyk A, Sorkin A. Grb2 regulates internalization of EGF receptors through clathrin-coated pits. *Mol Biol Cell.* 2003; 14(3):858-870. (Clone-specific: Western blot)

Sanjay A, Houghton A, Neff L. Cbl associates with Pyk2 and Src to regulate Src kinase activity, alpha(v)beta(3) integrin-mediated signaling, cell adhesion, and osteoclast motility. *J Cell Biol.* 2001; 152(1):181-195. (Clone-specific: Immunoprecipitation, Western blot)

BD Biosciences

bdbiosciences.com

United States	Canada	Europe	Japan	Asia Pacific	Latin America/Caribbean
877.232.8995	800.979.9408	32.53.720.550	0120.8555.90	65.6861.0633	55.11.5185.9995

For country contact information, visit bdbiosciences.com/contact

Conditions: The information disclosed herein is not to be construed as a recommendation to use the above product in violation of any patents. BD Biosciences will not be held responsible for patent infringement or other violations that may occur with the use of our products. Purchase does not include or carry any right to resell or transfer this product either as a stand-alone product or as a component of another product. Any use of this product other than the permitted use without the express written authorization of Becton, Dickinson and Company is strictly prohibited.

For Research Use Only. Not for use in diagnostic or therapeutic procedures. Not for resale.

Unless otherwise noted, BD, BD Logo and all other trademarks are property of Becton, Dickinson and Company. © 2011 BD

