

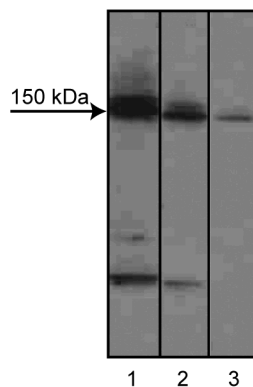
Technical Data Sheet

Purified Mouse Anti-LAR**Product Information**

Material Number:	610351
Alternate Name:	Leukocyte common Antigen-Related
Size:	150 µg
Concentration:	250 µg/ml
Clone:	7/LAR
Immunogen:	Human LAR aa. 24-196
Isotype:	Mouse IgG2a
Reactivity:	QC Testing: Human Tested in Development: Mouse, Rat
Target MW:	150 kDa
Storage Buffer:	Aqueous buffered solution containing BSA, glycerol, and ≤0.09% sodium azide.

Description

The Leukocyte common Antigen-Related (LAR) receptor protein tyrosine phosphatase (RTP) is one of approximately 20 known, distinct transmembrane RTPs. LAR consists of an extracellular region with three Ig-like and eight fibronectin type III-like (FNIII) domains and a cytoplasmic region containing two tyrosine phosphatase domains typical of RTPs. The Ig and FNIII domains of LAR show some sequence similarity to domains in the neural cell adhesion molecule N-CAM, a neural surface glycoprotein which mediates cell adhesion and neurite outgrowth. Studies suggest that LAR regulates neurite outgrowth and pathfinding during neural development. N-CAM and other cell adhesion molecules that affect neurite outgrowth, such as L1, TAG-1, and fasciculin II, lack intrinsic kinase or phosphatase activity. Thus, LAR is part of a distinct class of proteins with both cell adhesion and tyrosine phosphatase functions. LAR transcripts are alternatively spliced and that splicing is regulated during development. It is postulated that the various spliced forms of LAR each have specialized functions in the nervous system and play a role in neural development and regeneration.



Western blot analysis of LAR on a human endothelial cell lysate. Lane 1: 1:250, lane 2: 1:500, lane 3: 1:1000 dilution of the mouse anti-LAR antibody.

Preparation and Storage

Store undiluted at -20° C.

The monoclonal antibody was purified from tissue culture supernatant or ascites by affinity chromatography.

Application Notes**Application**

Western blot	Routinely Tested
Immunoprecipitation	Not Recommended

BD Biosciences

www.bdbiosciences.com

United States 877.232.8995 Canada 888.259.0187 Europe 32.53.720.550 Japan 0120.8555.90 Asia Pacific 65.6861.0633 Latin America/Caribbean 55.11.5185.9995

For country-specific contact information, visit www.bdbiosciences.com/how_to_order/

Conditions: The information disclosed herein is not to be construed as a recommendation to use the above product in violation of any patents. BD Biosciences will not be held responsible for patent infringement or other violations that may occur with the use of our products. Purchase does not include or carry any right to resell or transfer this product either as a stand-alone product or as a component of another product. Any use of this product other than the permitted use without the express written authorization of Becton Dickinson and Company is strictly prohibited.

For Research Use Only. Not for use in diagnostic or therapeutic procedures. Not for resale.

BD, BD Logo and all other trademarks are the property of Becton, Dickinson and Company. ©2007 BD



Immunofluorescence	Not Recommended
Immunohistochemistry	Not Recommended

Recommended Assay Procedure:

Western blot: Please refer to http://www.bdbiosciences.com/pharmingen/protocols/Western_Blotting.shtml

Suggested Companion Products

Catalog Number	Name	Size	Clone
554002	HRP Goat Anti-Mouse Ig	1.0 ml	(none)
611450	Human Endothelial Cell Lysate	500 µg	(none)

Product Notices

1. Since applications vary, each investigator should titrate the reagent to obtain optimal results.
2. Source of all serum proteins is from USDA inspected abattoirs located in the United States.
3. Caution: Sodium azide yields highly toxic hydrazoic acid under acidic conditions. Dilute azide compounds in running water before discarding to avoid accumulation of potentially explosive deposits in plumbing.
4. Please refer to www.bdbiosciences.com/pharmingen/protocols for technical protocols.

References

Arnett CH, Sale EM, Miller J, Sale GJ. Use of an antisense strategy to dissect the signaling role of protein-tyrosine phosphatase alpha. *J Biol Chem.* 1999; 274(37):26105-26112.(Biology: Western blot)

Katz JD, Ohnishi K, Lebow LT, Bonavida B. The SJL/J T cell response to both spontaneous and transplantable syngeneic reticulum cell sarcoma is mediated predominantly by the V beta 17a+ T cell clonotype. *J Exp Med.* 1988; 168(5):1553-1562.(Biology)

Longo FM, Martignetti JA, Le Beau JM. Leukocyte common antigen-related receptor-linked tyrosine phosphatase. Regulation of mRNA expression. *J Biol Chem.* 1993; 268(35):26503-26511.(Biology)

Tao J, Malbon CC, Wang HY. Galpha(i2) enhances insulin signaling via suppression of protein-tyrosine phosphatase 1B. *J Biol Chem.* 2001; 276(43):39705-39712.(Biology: Western blot)