

Technical Data Sheet

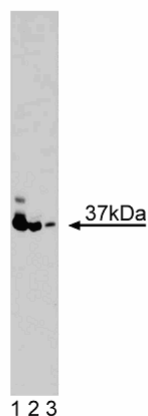
Purified Mouse Anti-PINCH

Product Information

Material Number:	612710
Size:	50 µg
Concentration:	250 µg/ml
Clone:	49/PINCH
Immunogen:	Human PINCH aa. 120-220
Isotype:	Mouse IgG2a
Reactivity:	QC Testing: Human Reactivity Confirmed in Development: Rat, Mouse Lack of Reactivity Confirmed in Development: Dog, Chicken
Target MW:	37 kDa
Storage Buffer:	Aqueous buffered solution containing BSA, glycerol, and ≤0.09% sodium azide.

Description

Integrins are transmembrane receptors that mediate cell-cell or cell-matrix adhesion. All integrins are heterodimers composed of α and β subunits, which interact with extracellular matrix and cytoskeletal proteins. Signal transduction through integrin receptors may be regulated by integrin-linked kinase (ILK). ILK is a widely expressed Ser/Thr protein kinase that contains four ankyrin-like repeats in the N-terminal region, a phosphoinositide lipid-binding motif at amino acids 180-212, and an integrin binding site at amino acids 293-451. The ankyrin repeats interact with a LIM domain-only protein called PINCH that also binds the adaptor protein, Nck-2. This interaction implicates ILK in growth factor receptor pathways. The PINCH adaptor protein also contains a leucine-rich nuclear export signal and a nuclear localization signal. These two motifs implicate PINCH in nuclear functions, and in Schwann cells PINCH has been found in the nucleus, as well as, cytoplasm and perinuclear regions. Thus, PINCH is an adaptor protein that functions in both integrin signaling and nuclear functions.



Western blot analysis of PINCH on K-562 lysate. Lane 1: 1:1000, lane 2: 1:2000, lane 3: 1:4000 dilution of anti-PINCH antibody.

Preparation and Storage

The monoclonal antibody was purified from tissue culture supernatant or ascites by affinity chromatography. Store undiluted at -20°C.

Application Notes

Application

Western blot	Routinely Tested
Immunofluorescence	Not Recommended

Recommended Assay Procedure:

Western blot: Please refer to http://www.bdbiosciences.com/pharming/protocols/Western_Blotting.shtml.

BD Biosciences

bdbiosciences.com

United States	Canada	Europe	Japan	Asia Pacific	Latin America/Caribbean
877.232.8995	888.259.0187	32.53.720.550	0120.8555.90	65.6861.0633	55.11.5185.9995

For country-specific contact information, visit bdbiosciences.com/how_to_order/

Conditions: The information disclosed herein is not to be construed as a recommendation to use the above product in violation of any patents. BD Biosciences will not be held responsible for patent infringement or other violations that may occur with the use of our products. Purchase does not include or carry any right to resell or transfer this product either as a stand-alone product or as a component of another product. Any use of this product other than the permitted use without the express written authorization of Becton Dickinson and Company is strictly prohibited.

For Research Use Only. Not for use in diagnostic or therapeutic procedures. Not for resale.

BD, BD Logo and all other trademarks are the property of Becton, Dickinson and Company. ©2008 BD



Product Notices

1. Since applications vary, each investigator should titrate the reagent to obtain optimal results.
2. Please refer to www.bdbiosciences.com/pharmingen/protocols for technical protocols.
3. Caution: Sodium azide yields highly toxic hydrazoic acid under acidic conditions. Dilute azide compounds in running water before discarding to avoid accumulation of potentially explosive deposits in plumbing.
4. Source of all serum proteins is from USDA inspected abattoirs located in the United States.

References

- Campana WM, Myers RR, Rearden A. Identification of PINCH in Schwann cells and DRG neurons: shuttling and signaling after nerve injury. *Glia*. 2003; 41(3):213-223.(Biology)
- Tu Y, Li F, Goicoechea S, Wu C. The LIM-only protein PINCH directly interacts with integrin-linked kinase and is recruited to integrin-rich sites in spreading cells. *Mol Cell Biol*. 1999; 19(3):2425-2434.(Biology)
- Tu Y, Li F, Wu C. Nck-2, a novel Src homology2/3-containing adaptor protein that interacts with the LIM-only protein PINCH and components of growth factor receptor kinase-signaling pathways. *Mol Biol Cell*. 1998; 9(12):3367-3382.(Biology)