

Technical Data Sheet

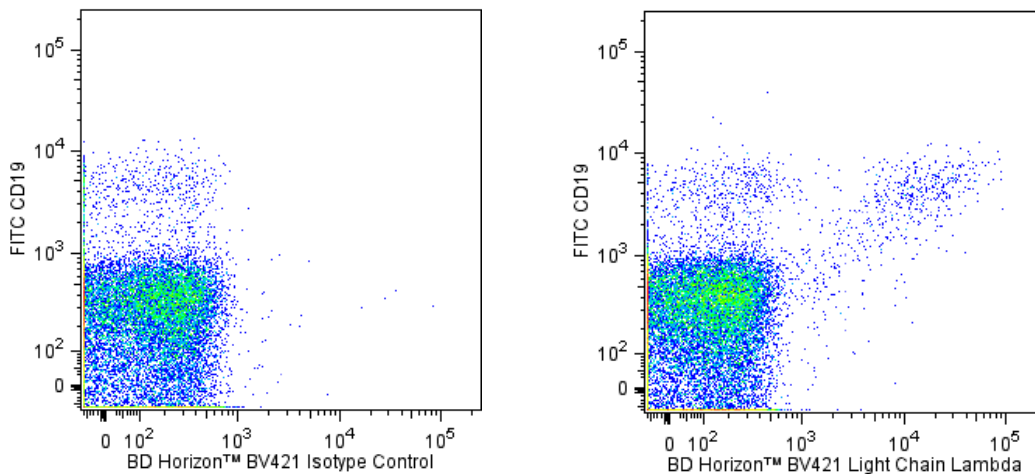
BV421 Mouse Anti-Human Light Chain, λ **Product Information**

Material Number:	562893
Alternate Name:	Ig λ ; IGL@; IGL; Immunoglobulin lambda locus
Size:	50 tests
Vol. per Test:	5 μ l
Clone:	JDC-12
Isotype:	Mouse IgG1, κ
Reactivity:	QC Testing: Human
Workshop:	NA
Storage Buffer:	Aqueous buffered solution containing BSA and $\leq 0.09\%$ sodium azide.

Description

The JDC-12 monoclonal antibody specifically binds to human immunoglobulin light chain, lambda (λ). It does not bind to immunoglobulin κ light chains or heavy chains.

The antibody was conjugated to BD Horizon™ BV421 which is part of the BD Horizon™ Brilliant Violet™ family of dyes. With an Ex Max of 407-nm and Em Max at 421-nm, BD Horizon™ BV421 can be excited by the violet laser and detected in the standard Pacific Blue™ filter set (eg, 450/50-nm filter). BD Horizon™ BV421 conjugates are very bright, often exhibiting a 10 fold improvement in brightness compared to Pacific Blue™ conjugates.



Two-color flow cytometric analysis of Immunoglobulin Light Chain λ expression on human peripheral blood lymphocytes. Human peripheral blood mononuclear cells were incubated in complete tissue culture medium overnight in order to minimize subsequent nonspecific immunofluorescent staining. The cells were harvested and stained with FITC Mouse Anti-Human CD19 antibody (Cat. No. 555412/560994) and with either BD Horizon™ BV421 Mouse IgG1, κ Isotype Control (Cat. No. 562438; Left Panel) or BD Horizon™ BV421 Mouse Anti-Human Light Chain, λ antibody (Cat. No. 562893; Right Panel). Two-color flow cytometric dot plots show the correlated expression of Human Immunoglobulin Light Chain λ (or Ig Isotype control staining) versus CD19 for gated events with the forward and side light-scatter characteristics of viable lymphocytes. Flow cytometry was performed using a BD™ LSR II Flow Cytometer System.

Preparation and Storage

Store undiluted at 4°C and protected from prolonged exposure to light. Do not freeze.

The monoclonal antibody was purified from tissue culture supernatant or ascites by affinity chromatography.

The antibody was conjugated with BD Horizon™ BV421 under optimum conditions, and unconjugated antibody and free BD Horizon™ BV421 were removed.

Application Notes**Application**

Flow cytometry	Routinely Tested
----------------	------------------

BD Biosciences

bdbiosciences.com

United States	Canada	Europe	Japan	Asia Pacific	Latin America/Caribbean
877.232.8995	800.979.9408	32.53.720.550	0120.8555.90	65.6861.0633	55.11.5185.9995

For country contact information, visit bdbiosciences.com/contact

Conditions: The information disclosed herein is not to be construed as a recommendation to use the above product in violation of any patents. BD Biosciences will not be held responsible for patent infringement or other violations that may occur with the use of our products. Purchase does not include or carry any right to resell or transfer this product either as a stand-alone product or as a component of another product. Any use of this product other than the permitted use without the express written authorization of Becton, Dickinson and Company is strictly prohibited.

For Research Use Only. Not for use in diagnostic or therapeutic procedures. Not for resale.

Unless otherwise noted, BD, BD Logo and all other trademarks are property of Becton, Dickinson and Company. © 2011 BD



Suggested Companion Products

Catalog Number	Name	Size	Clone
554656	Stain Buffer (FBS)	500 ml	(none)
562438	BV421 Mouse IgG1, k Isotype Control	50 µg	X40
555412	FITC Mouse Anti-Human CD19	100 tests	HIB19
560994	FITC Mouse Anti-Human CD19	25 tests	HIB19

Product Notices

1. This reagent has been pre-diluted for use at the recommended Volume per Test. We typically use 1×10^6 cells in a 100-µl experimental sample (a test).
2. Source of all serum proteins is from USDA inspected abattoirs located in the United States.
3. An isotype control should be used at the same concentration as the antibody of interest.
4. Please refer to www.bdbiosciences.com/pharming/protocols for technical protocols.
5. Caution: Sodium azide yields highly toxic hydrazoic acid under acidic conditions. Dilute azide compounds in running water before discarding to avoid accumulation of potentially explosive deposits in plumbing.
6. For fluorochrome spectra and suitable instrument settings, please refer to our Multicolor Flow Cytometry web page at www.bdbiosciences.com/colors.
7. Pacific Blue™ is a trademark of Molecular Probes, Inc., Eugene, OR.
8. Brilliant Violet™ 421 is a trademark of Sirigen.

References

Odendahl M, Jacobi A, Hansen A, et al. Disturbed peripheral B lymphocyte homeostasis in systemic lupus erythematosus. *J Immunol.* 2000; 165(10):5970-5979. (Clone-specific: Flow cytometry)

BD Biosciences

bdbiosciences.com

United States	Canada	Europe	Japan	Asia Pacific	Latin America/Caribbean
877.232.8995	800.979.9408	32.53.720.550	0120.8555.90	65.6861.0633	55.11.5185.9995

For country contact information, visit bdbiosciences.com/contact

Conditions: The information disclosed herein is not to be construed as a recommendation to use the above product in violation of any patents. BD Biosciences will not be held responsible for patent infringement or other violations that may occur with the use of our products. Purchase does not include or carry any right to resell or transfer this product either as a stand-alone product or as a component of another product. Any use of this product other than the permitted use without the express written authorization of Becton, Dickinson and Company is strictly prohibited.

For Research Use Only. Not for use in diagnostic or therapeutic procedures. Not for resale.

Unless otherwise noted, BD, BD Logo and all other trademarks are property of Becton, Dickinson and Company. © 2011 BD

