

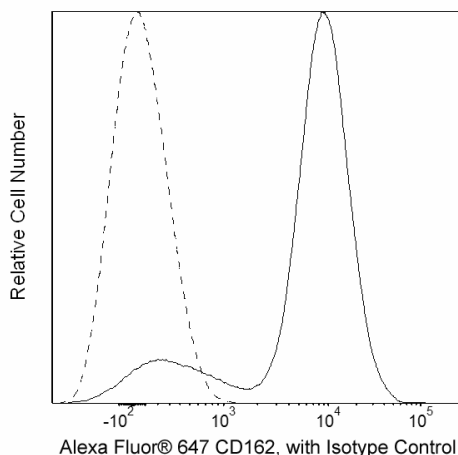
## Technical Data Sheet

**Alexa Fluor® 647 Mouse Anti-Human CD162****Product Information**

<b>Material Number:</b>	<b>562758</b>
<b>Alternate Name:</b>	SELPLG; Selectin P ligand; P-selectin glycoprotein ligand 1; PSGL-1; CLA
<b>Size:</b>	50 tests
<b>Vol. per Test:</b>	5 µl
<b>Clone:</b>	KPL-1
<b>Immunogen:</b>	Human PSGL-1 Transfected Cell Line
<b>Isotype:</b>	Mouse (BALB/c) IgG1, κ
<b>Reactivity:</b>	QC Testing: Human
<b>Storage Buffer:</b>	Aqueous buffered solution containing BSA and ≤0.09% sodium azide.

**Description**

The KPL-1 monoclonal antibody specifically binds to p-selectin glycoprotein ligand-1 (PSGL-1), a 120-220 kDa, mucin-like type I transmembrane glycoprotein. CD162 is expressed on neutrophils, monocytes, and most lymphocytes. CD162 binds to CD62P (P-Selectin), CD62E (E-Selectin) and CD62L (L-Selectin). This molecule mediates rolling of leukocytes on activated endothelium and the interaction between leukocytes and activated platelets or other leukocytes found at inflammatory sites. It has also been reported that this clone completely inhibits the interaction between P-Selectin and either CD4-T cells or neutrophils.



**Flow cytometric analysis of CD162 expression on human peripheral blood lymphocytes.** Whole blood was stained with either Alexa Fluor® 647 Mouse anti-Human CD162 antibody (Cat. No. 562758; solid line histogram) or with an Alexa Fluor® 647 Mouse IgG1, κ Isotype Control (Cat. No. 557714; dashed line histogram). The erythrocytes were lysed with BD Pharm Lyse™ Lysing Buffer (Cat. No. 555899). The fluorescence histograms were derived from events with the forward and side light-scatter characteristics of viable lymphocytes. Flow cytometry was performed using a BD™ LSR II Flow Cytometer System.

**Preparation and Storage**

Store undiluted at 4°C and protected from prolonged exposure to light. Do not freeze.

The monoclonal antibody was purified from tissue culture supernatant or ascites by affinity chromatography.

The antibody was conjugated to Alexa Fluor® 647 under optimum conditions, and unreacted Alexa Fluor® 647 was removed.

**Application Notes****Application**

Flow cytometry	Routinely Tested
----------------	------------------

**Suggested Companion Products**

Catalog Number	Name	Size	Clone
554656	Stain Buffer (FBS)	500 ml	(none)
557714	Alexa Fluor® 647 Mouse IgG1 κ Isotype Control	100 tests	MOPC-21
555899	Lysing Buffer	100 ml	(none)

**BD Biosciences**

[bdbiosciences.com](http://bdbiosciences.com)

United States	Canada	Europe	Japan	Asia Pacific	Latin America/Caribbean
877.232.8995	800.979.9408	32.53.720.550	0120.8555.90	65.6861.0633	55.11.5185.9995

For country contact information, visit [bdbiosciences.com/contact](http://bdbiosciences.com/contact)

*Conditions: The information disclosed herein is not to be construed as a recommendation to use the above product in violation of any patents. BD Biosciences will not be held responsible for patent infringement or other violations that may occur with the use of our products. Purchase does not include or carry any right to resell or transfer this product either as a stand-alone product or as a component of another product. Any use of this product other than the permitted use without the express written authorization of Becton, Dickinson and Company is strictly prohibited.*

*For Research Use Only. Not for use in diagnostic or therapeutic procedures. Not for resale.*

Unless otherwise noted, BD, BD Logo and all other trademarks are property of Becton, Dickinson and Company. © 2011 BD



## Product Notices

1. This reagent has been pre-diluted for use at the recommended Volume per Test. We typically use  $1 \times 10^6$  cells in a 100- $\mu$ l experimental sample (a test).
2. Source of all serum proteins is from USDA inspected abattoirs located in the United States.
3. An isotype control should be used at the same concentration as the antibody of interest.
4. Please refer to [www.bdbiosciences.com/pharming/en/protocols](http://www.bdbiosciences.com/pharming/en/protocols) for technical protocols.
5. The Alexa Fluor®, Pacific Blue™, and Cascade Blue® dye antibody conjugates in this product are sold under license from Molecular Probes, Inc. for research use only, excluding use in combination with microarrays, or as analyte specific reagents. The Alexa Fluor® dyes (except for Alexa Fluor® 430), Pacific Blue™ dye, and Cascade Blue® dye are covered by pending and issued patents.
6. Alexa Fluor® is a registered trademark of Molecular Probes, Inc., Eugene, OR.
7. Alexa Fluor® 647 fluorochrome emission is collected at the same instrument settings as for allophycocyanin (APC).
8. Caution: Sodium azide yields highly toxic hydrazoic acid under acidic conditions. Dilute azide compounds in running water before discarding to avoid accumulation of potentially explosive deposits in plumbing.
9. For fluorochrome spectra and suitable instrument settings, please refer to our Multicolor Flow Cytometry web page at [www.bdbiosciences.com/colors](http://www.bdbiosciences.com/colors).

## References

Snapp KR, Ding H, Atkins K, Warnke R, Luscinskas FW, Kansas GS. A novel P-selectin glycoprotein ligand-1 monoclonal antibody recognizes an epitope within the tyrosine sulfate motif of human PSGL-1 and blocks recognition of both P- and L-selectin. *Blood*. 1998; 91(1):154-164. (Immunogen: Blocking, Flow cytometry, Inhibition, Western blot)

Zola H, Swart B, Nicholson I, Voss E. *Leukocyte and Stromal Cell Molecules. The CD Markers*. Hoboken, New Jersey: John Wiley & Sons, Inc.; 2007:1-581. (Biology)

## BD Biosciences

[bdbiosciences.com](http://bdbiosciences.com)

United States	Canada	Europe	Japan	Asia Pacific	Latin America/Caribbean
877.232.8995	800.979.9408	32.53.720.550	0120.8555.90	65.6861.0633	55.11.5185.9995

For country contact information, visit [bdbiosciences.com/contact](http://bdbiosciences.com/contact)

*Conditions: The information disclosed herein is not to be construed as a recommendation to use the above product in violation of any patents. BD Biosciences will not be held responsible for patent infringement or other violations that may occur with the use of our products. Purchase does not include or carry any right to resell or transfer this product either as a stand-alone product or as a component of another product. Any use of this product other than the permitted use without the express written authorization of Becton, Dickinson and Company is strictly prohibited.*

*For Research Use Only. Not for use in diagnostic or therapeutic procedures. Not for resale.*

Unless otherwise noted, BD, BD Logo and all other trademarks are property of Becton, Dickinson and Company. © 2011 BD

