

Technical Data Sheet

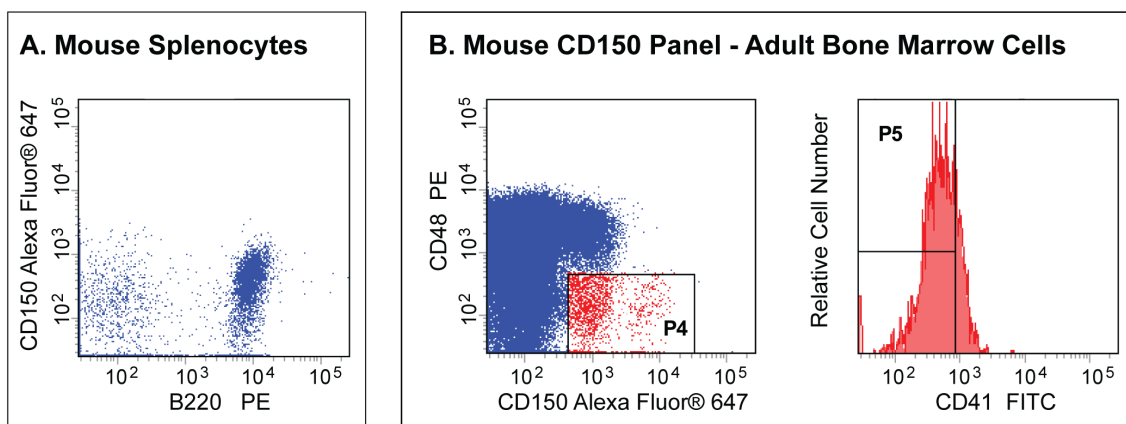
Alexa Fluor® 647 Rat anti-Mouse CD150

Product Information

Material Number:	562647
Alternate Name:	SLAM; Slamf1; Signaling lymphocytic activation molecule family member 1
Size:	50 µg
Concentration:	0.2 mg/ml
Clone:	Q38-480
Immunogen:	Mouse CD150 Recombinant Protein
Isotype:	Rat IgG2a, κ
Reactivity:	QC Testing: Mouse
Storage Buffer:	Aqueous buffered solution containing ≤0.09% sodium azide.

Description

The Q38-480 monoclonal antibody specifically binds to mouse CD150, also known as SLAM (signaling lymphocyte activation molecule). CD150 is a type 1 transmembrane glycoprotein that is a member of the CD2 subfamily of the Ig superfamily. It is encoded by the *Slamf1* (signaling lymphocytic activation molecule family member 1) gene. CD150 is differentially expressed on subsets of thymocytes, T and B lymphocytes, dendritic cells, macrophages, and endothelial cells. SLAM plays multiple roles in innate and adaptive immunity serving as an adhesion molecule and/or coreceptor. CD150-mediated costimulation of TCR-activated T cells reportedly results in the increased production of IFN-γ by Th1 cells and is required for IL-4 production by T follicular helper cells. CD150 also plays important roles in hematopoietic cell developmental pathways. CD150 is differentially expressed by self-renewing adult hematopoietic stem cells (HSC) that are CD150+ whereas non-multipotent hematopoietic progenitor cells are CD150-. Utilizing additional cell surface markers, lineage-negative CD150+CD48-CD41- cell fractions are reported to be highly enriched for adult HSC.



Multicolor flow cytometric analysis of adult mouse spleen cells and bone marrow hematopoietic stem cells.

(Panel A) BALB/c spleen cells were stained with PE Rat Anti-Mouse CD45R/B220 (Cat. No. 553090/553089/561878) and Alexa Fluor® 647 Rat Anti-Mouse CD150 (Cat. No. 562647), staining cells well above background compared to Alexa Fluor® 647 Rat IgG2a, κ isotype control (Cat. No. 557690) (data not shown). A two-color flow cytometric dot plot shows the expression of B220 versus CD150 expressed by events with the forward and side-light scattering characteristics of viable lymphocytes.

(Panel B) BALB/c mouse bone-marrow cells were labeled with the BD IMag™ Mouse Hematopoietic Progenitor Enrichment Set (Cat. No. 558451) and separated on the BD IMagnet™ (Cat. No. 552311) according to the set protocol. The non-depleted bone marrow cells were subsequently stained with BD Horizon™ V450 Mouse Lineage Antibody Cocktail (Cat. No. 561301) and FITC Rat Anti-Mouse CD41 (Cat. No. 553848/561849), PE Hamster Anti-Mouse CD48 (Cat. No. 557485), and Alexa Fluor® 647 Rat Anti-Mouse CD150 antibodies. A fluorescence histogram (Right Plot) shows little or no CD41 expression (P5 Gate) by bone marrow cells that were progressively gated as viable (light scatter gated), Lineage-negative and CD48- CD150+ (Middle Plot, P4 Gate) cells. Lineage- CD48- CD150+ bone marrow cells have been reported to be highly enriched for adult mouse hematopoietic stem cells.

Flow cytometry was performed using a BD™ LSR II Flow Cytometer System.

Preparation and Storage

The monoclonal antibody was purified from tissue culture supernatant or ascites by affinity chromatography.

The antibody was conjugated to Alexa Fluor® 647 under optimum conditions, and unreacted Alexa Fluor® 647 was removed.

Store undiluted at 4°C and protected from prolonged exposure to light. Do not freeze.

BD Biosciences

bdbiosciences.com

United States	Canada	Europe	Japan	Asia Pacific	Latin America/Caribbean
877.232.8995	800.979.9408	32.53.720.550	0120.8555.90	65.6861.0633	55.11.5185.9995

For country contact information, visit bdbiosciences.com/contact

Conditions: The information disclosed herein is not to be construed as a recommendation to use the above product in violation of any patents. BD Biosciences will not be held responsible for patent infringement or other violations that may occur with the use of our products. Purchase does not include or carry any right to resell or transfer this product either as a stand-alone product or as a component of another product. Any use of this product other than the permitted use without the express written authorization of Becton, Dickinson and Company is strictly prohibited.

For Research Use Only. Not for use in diagnostic or therapeutic procedures. Not for resale.

Unless otherwise noted, BD, BD Logo and all other trademarks are property of Becton, Dickinson and Company. © 2011 BD

Application Notes

Application

Flow cytometry

Routinely Tested

Suggested Companion Products

Catalog Number	Name	Size	Clone
554656	Stain Buffer (FBS)	500 ml	(none)
557690	Alexa Fluor® 647 Rat IgG2a, κ Isotype Control	0.1 mg	R35-95
558451	Mouse Hematopoietic Progenitor (Stem) Cell Enrichment Set - DM	5.0 ml	(none)
552311	Cell Separation Magnet	each	(none)
561301	V450 Mouse Lineage Antibody Cocktail, with Isotype Control	100 tests	(none)
561878	PE Rat Anti-Mouse CD45R/B220	25 µg	RA3-6B2
553089	PE Rat Anti-Mouse CD45R/B220	0.1 mg	RA3-6B2
553090	PE Rat Anti-Mouse CD45R/B220	0.2 mg	RA3-6B2
553848	FITC Rat Anti-Mouse CD41	0.5 mg	MWReg30
561849	FITC Rat Anti-Mouse CD41	50 µg	MWReg30
562398	PE Hamster Anti-Mouse CD48	50 µg	HM48-1
557485	PE Hamster Anti-Mouse CD48	0.1 mg	HM48-1

Product Notices

1. Since applications vary, each investigator should titrate the reagent to obtain optimal results.
2. An isotype control should be used at the same concentration as the antibody of interest.
3. Please refer to www.bdbiosciences.com/pharming/protocols for technical protocols.
4. For fluorochrome spectra and suitable instrument settings, please refer to our Multicolor Flow Cytometry web page at www.bdbiosciences.com/colors.
5. The Alexa Fluor®, Pacific Blue™, and Cascade Blue® dye antibody conjugates in this product are sold under license from Molecular Probes, Inc. for research use only, excluding use in combination with microarrays, or as analyte specific reagents. The Alexa Fluor® dyes (except for Alexa Fluor® 430), Pacific Blue™ dye, and Cascade Blue® dye are covered by pending and issued patents.
6. Alexa Fluor® 647 fluorochrome emission is collected at the same instrument settings as for allophycocyanin (APC).
7. Caution: Sodium azide yields highly toxic hydrazoic acid under acidic conditions. Dilute azide compounds in running water before discarding to avoid accumulation of potentially explosive deposits in plumbing.
8. Alexa Fluor® is a registered trademark of Molecular Probes, Inc., Eugene, OR.

References

Castro AG, Hauser TM, Cocks BG, et al. Molecular and functional characterization of mouse signaling lymphocytic activation molecule (SLAM): differential expression and responsiveness in Th1 and Th2 cells. *J Immunol.* 1999; 163(11):5860-5870. (Biology)

Kiel MJ, Yilmaz OH, Iwashita T, Terhorst C, Morrison SJ. SLAM family receptors distinguish hematopoietic stem and progenitor cells and reveal endothelial niches for stem cells. *Cell.* 2005; 121(7):1109-1121. (Biology)

Wang N, Satoskar A, Faubion W, et al. The cell surface receptor SLAM controls T cell and macrophage functions. *J Exp Med.* 2004; 199(9):1255-1264. (Biology)

Yusuf I, Kageyama R, Monticelli L, Johnston RJ, Ditoro D, Hansen K, Barnett B, Crotty S. Germinal center T follicular helper cell IL-4 production is dependent on signaling lymphocytic activation molecule receptor (CD150). *J Immunol.* 2010; 185(1):190-202. (Biology)

BD Biosciences

bdbiosciences.com

United States	Canada	Europe	Japan	Asia Pacific	Latin America/Caribbean
877.232.8995	800.979.9408	32.53.720.550	0120.8555.90	65.6861.0633	55.11.5185.9995

For country contact information, visit bdbiosciences.com/contact

Conditions: The information disclosed herein is not to be construed as a recommendation to use the above product in violation of any patents. BD Biosciences will not be held responsible for patent infringement or other violations that may occur with the use of our products. Purchase does not include or carry any right to resell or transfer this product either as a stand-alone product or as a component of another product. Any use of this product other than the permitted use without the express written authorization of Becton, Dickinson and Company is strictly prohibited.

For Research Use Only. Not for use in diagnostic or therapeutic procedures. Not for resale.

Unless otherwise noted, BD, BD Logo and all other trademarks are property of Becton, Dickinson and Company. © 2011 BD

