

## Technical Data Sheet

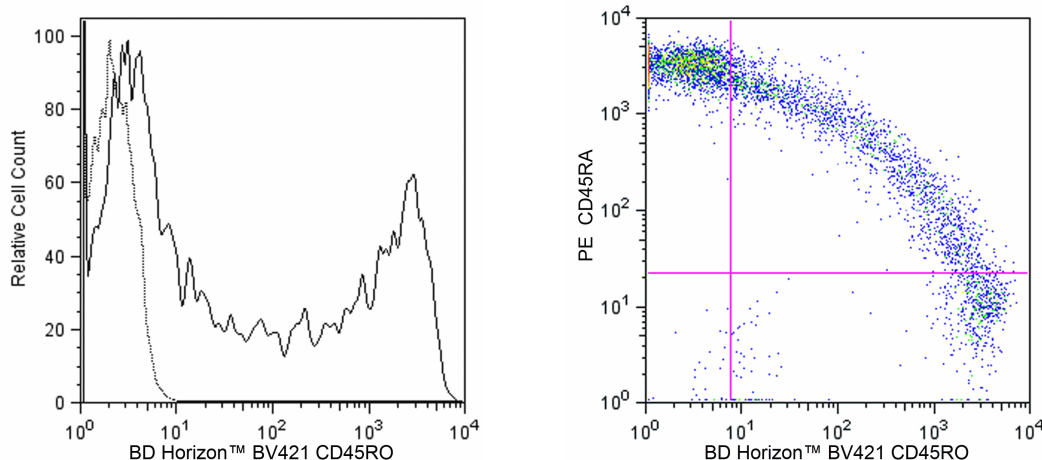
**BV421 Mouse Anti-Human CD45RO****Product Information**

<b>Material Number:</b>	<b>562641</b>
<b>Alternate Name:</b>	CD45R; PTPRC; LCA; Leukocyte common antigen; GP180; LY5; T200
<b>Size:</b>	100 tests
<b>Vol. per Test:</b>	5 µl
<b>Clone:</b>	UCHL1
<b>Immunogen:</b>	Human IL-2-dependent T-cell line
<b>Isotype:</b>	Mouse (BALB/c) IgG2a, κ
<b>Reactivity:</b>	QC Testing: Human
<b>Workshop:</b>	IV N31
<b>Storage Buffer:</b>	Aqueous buffered solution containing BSA and ≤0.09% sodium azide.

**Description**

The UCHL1 monoclonal antibody specifically binds to the 180 kDa isoform of CD45 (aka, the Leukocyte Common Antigen). CD45RO is a type I transmembrane glycoprotein that has cytoplasmic protein tyrosine phosphatase activity and functions in signal transduction pathways. This CD45 isoform does not include amino acid sequences encoded by the variable CD45 exons A, B, or C. CD45RO is expressed on most thymocytes, activated T cells, memory T cells, granulocytes and monocytes, but only on a proportion of resting T cells. CD45RO and CD45RA antibodies seem to define complementary, predominantly non-overlapping, populations in resting peripheral T cells, demonstrating heterogeneity within the CD8 and CD4 subpopulations. CD45RO binds to CD22.

The antibody was conjugated to BD Horizon™ BV421 which is part of the BD Horizon™ Brilliant Violet™ family of dyes. With an Ex Max of 407-nm and Em Max at 421-nm, BD Horizon™ BV421 can be excited by the violet laser and detected in the standard Pacific Blue™ filter set (eg, 450/50-nm filter). BD Horizon™ BV421 conjugates are very bright, often exhibiting a 10 fold improvement in brightness compared to Pacific Blue™ conjugates.

**Multicolor flow cytometric analysis of CD45RO expression on human peripheral blood lymphocytes.**

*Left Panel:* Whole blood was stained with BD Horizon™ BV421 Mouse Anti-Human CD45RO antibody (Cat. No. 562641/562649; solid line histogram), or with a BD Horizon™ BV421 Mouse IgG2a, κ Isotype Control (Cat. No. 562439; dashed line histogram).

*Right Panel:* Whole blood was stained with BD Horizon™ BV421 Mouse Anti-Human CD45RO antibody in conjunction with a PE Mouse Anti-Human CD45RA antibody (Cat. No. 555489).

Erythrocytes were lysed with BD Pharm Lyse™ Lysing Buffer (Cat. No. 555899). The fluorescence histograms and dot plot (CD45RO versus CD45RA expression) were derived from gated events with the forward and side light-scatter characteristics of viable lymphocytes. Flow cytometry was performed using a BD™ LSR II Flow Cytometer System.

**Preparation and Storage**

Store undiluted at 4°C and protected from prolonged exposure to light. Do not freeze.

The monoclonal antibody was purified from tissue culture supernatant or ascites by affinity chromatography.

The antibody was conjugated with BD Horizon™ BV421 under optimum conditions, and unconjugated antibody and free BD Horizon™ BV421 were removed.

**BD Biosciences**

[bdbiosciences.com](http://bdbiosciences.com)

<b>United States</b>	<b>Canada</b>	<b>Europe</b>	<b>Japan</b>	<b>Asia Pacific</b>	<b>Latin America/Caribbean</b>
877.232.8995	800.979.9408	32.53.720.550	0120.8555.90	65.6861.0633	55.11.5185.9995

For country contact information, visit [bdbiosciences.com/contact](http://bdbiosciences.com/contact)

Conditions: The information disclosed herein is not to be construed as a recommendation to use the above product in violation of any patents. BD Biosciences will not be held responsible for patent infringement or other violations that may occur with the use of our products. Purchase does not include or carry any right to resell or transfer this product either as a stand-alone product or as a component of another product. Any use of this product other than the permitted use without the express written authorization of Becton, Dickinson and Company is strictly prohibited.  
For Research Use Only. Not for use in diagnostic or therapeutic procedures. Not for resale.

Unless otherwise noted, BD, BD Logo and all other trademarks are property of Becton, Dickinson and Company. © 2011 BD



## Application Notes

### Application

Flow cytometry

Routinely Tested

### Suggested Companion Products

Catalog Number	Name	Size	Clone
562439	BV421 Mouse IgG2a, k Isotype Control	50 µg	G155-178
554656	Stain Buffer (FBS)	500 ml	(none)
555489	PE Mouse Anti-Human CD45RA	100 tests	HI100
555899	Lysing Buffer	100 ml	(none)
562649	BV421 Mouse Anti-Human CD45RO	25 tests	UCHL1

### Product Notices

1. This reagent has been pre-diluted for use at the recommended Volume per Test. We typically use  $1 \times 10^6$  cells in a 100-µl experimental sample (a test).
2. Source of all serum proteins is from USDA inspected abattoirs located in the United States.
3. An isotype control should be used at the same concentration as the antibody of interest.
4. Please refer to [www.bdbiosciences.com/pharming/en/protocols](http://www.bdbiosciences.com/pharming/en/protocols) for technical protocols.
5. Caution: Sodium azide yields highly toxic hydrazoic acid under acidic conditions. Dilute azide compounds in running water before discarding to avoid accumulation of potentially explosive deposits in plumbing.
6. For fluorochrome spectra and suitable instrument settings, please refer to our Multicolor Flow Cytometry web page at [www.bdbiosciences.com/colors](http://www.bdbiosciences.com/colors).
7. Pacific Blue™ is a trademark of Molecular Probes, Inc., Eugene, OR.
8. Brilliant Violet™ 421 is a trademark of Sirigen.

### References

Akbar AN, Terry L, Timms A, Beverley PC, Janossy G. Loss of CD45R and gain of UCHL1 reactivity is a feature of primed T cells. *J Immunol.* 1988; 140(7):2171-2178. (Clone-specific: Flow cytometry)

Knapp W, Dörken B, Gilks WR, et al, ed. *Leucocyte Typing IV*. New York, NY: Oxford University Press; 1989:1-1182. (Clone-specific)

Norton AJ, Ramsay AD, Smith SH, Beverley PC, Isaacson PG. Monoclonal antibody (UCHL1) that recognises normal and neoplastic T cells in routinely fixed tissues. *J Clin Pathol.* 1986; 39(4):399-405. (Immunogen: Immunohistochemistry)

Smith SH, Brown MH, Rowe D, Callard RE, Beverley PC. Functional subsets of human helper-inducer cells defined by a new monoclonal antibody, UCHL1. *Immunology.* 1986; 58(1):63-70. (Clone-specific: Flow cytometry, Immunohistochemistry, Immunoprecipitation)

Zola H, Swart B, Nicholson I, Voss E. *Leukocyte and Stromal Cell Molecules. The CD Markers*. Hoboken, New Jersey: John Wiley & Sons, Inc.; 2007:1-581. (Biology)

## BD Biosciences

[bdbiosciences.com](http://bdbiosciences.com)

United States	Canada	Europe	Japan	Asia Pacific	Latin America/Caribbean
877.232.8995	800.979.9408	32.53.720.550	0120.8555.90	65.6861.0633	55.11.5185.9995

For country contact information, visit [bdbiosciences.com/contact](http://bdbiosciences.com/contact)

Conditions: The information disclosed herein is not to be construed as a recommendation to use the above product in violation of any patents. BD Biosciences will not be held responsible for patent infringement or other violations that may occur with the use of our products. Purchase does not include or carry any right to resell or transfer this product either as a stand-alone product or as a component of another product. Any use of this product other than the permitted use without the express written authorization of Becton, Dickinson and Company is strictly prohibited.

For Research Use Only. Not for use in diagnostic or therapeutic procedures. Not for resale.

Unless otherwise noted, BD, BD Logo and all other trademarks are property of Becton, Dickinson and Company. © 2011 BD

