

RosetteSep™ PROCEDURE:

Before commencing, ensure that blood sample, PBS + 2% FBS (Catalog #07905), density medium (See Notes & Tips, opposite page) and centrifuge are all at room temperature (15 - 25°C).

1. Add RosetteSep™ Human T Cell Enrichment Cocktail at **50 µL/mL** of whole blood* (e.g. for 2 mL of whole blood, add 100 µL of cocktail). Mix well.
- *Note: If using samples other than whole blood, please see Notes and Tips.
2. Incubate **20** minutes at room temperature (15 - 25°C).
3. Dilute sample with an equal volume of PBS + 2% FBS and mix gently.
4. Layer the diluted sample on top of the density medium (See Notes & Tips, opposite page).

OR

Layer the density medium underneath the diluted sample.

Be careful to minimize mixing of density medium and sample.

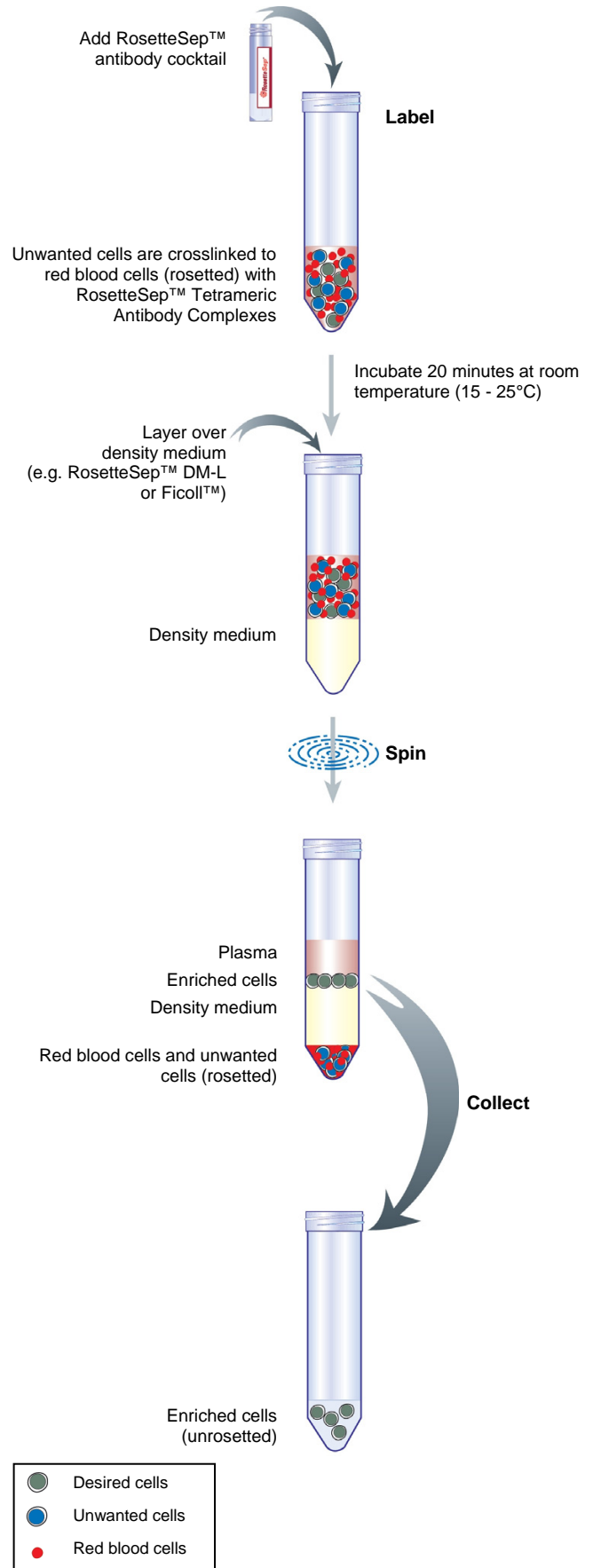
See Table 1 below for volume recommendations. With 50 mL centrifuge tubes, we suggest using a minimum of 15 mL density medium to make it easier to remove the enriched cell layer.

TABLE 1. RECOMMENDED VOLUMES AND TUBE SIZES

Whole Blood (mL)	PBS + 2% FBS (mL)	Density Medium (mL)	Tube Size (mL)
1	1	1.5	5
2	2	3	14
3	3	3	14
4	4	4	14
5	5	15	50
10	10	15	50
15	15	15	50

5. Centrifuge for **20** minutes at 1200 x g (See Notes and Tips) at room temperature (15 - 25°C), with the brake off.
6. Remove the enriched cells from the density medium : plasma interface.
Sometimes it is difficult to see the cells at the interface, especially when very rare cells are enriched. It is advisable to remove some of the density medium along with the enriched cells in order to ensure their complete recovery.
7. Wash enriched cells with PBS + 2% FBS. Repeat.
8. Use enriched cells as desired. We recommend that enriched samples are lysed with ammonium chloride to remove residual red blood cells prior to flow cytometric analysis (this can be done as one of the wash steps) or if residual red blood cells will interfere with subsequent assays.

ROSETTESEP™ PROTOCOL DIAGRAM



WWW.STEMCELL.COM

STEMCELL
TECHNOLOGIES

IN NORTH AMERICA TOLL-FREE T. 1 800 667 0322 TOLL-FREE F. 1 800 567 2899 T. +1 604 877 0713 F. +1 604 877 0704 E. INFO@STEMCELL.COM
 IN EUROPE TOLL-FREE T. 00 800 7836 2355 TOLL-FREE F. 00 800 7836 2300 E. INFO.EU@STEMCELL.COM
 IN AUSTRALIA TOLL-FREE T. 1 800 060 350 F. +61 (03) 9338 4320 E. INFO.AUS@STEMCELL.COM
 IN SINGAPORE T. +(65) 6776 7754 F. +(65) 6776 7114 E. INFO.SG@STEMCELL.COM

Printed on recycled paper.

CATALOG #15021
CATALOG #15061

2 mL For labeling 40 mL of whole blood
10 mL For labeling 200 mL of whole blood



PRODUCT INFORMATION SHEET

PRODUCT DESCRIPTION AND APPLICATIONS:

The RosetteSep™ Human T Cell Enrichment Cocktail is designed to enrich T cells from whole blood.

ROSETTESEP™ LABELING OF HUMAN CELLS:

The RosetteSep™ antibody cocktail crosslinks unwanted cells in human whole blood to multiple red blood cells (RBCs), forming immunorosettes (Figure 1). This increases the density of the unwanted (rosetted) cells, such that they pellet along with the free RBCs when centrifuged over a buoyant density medium such as RosetteSep™ DM-L (Catalog #15705) or Ficoll-Paque™ PLUS (Catalog #07957). Desired cells are never labeled with antibody and are easily collected as a highly enriched population at the interface between the plasma and the buoyant density medium.

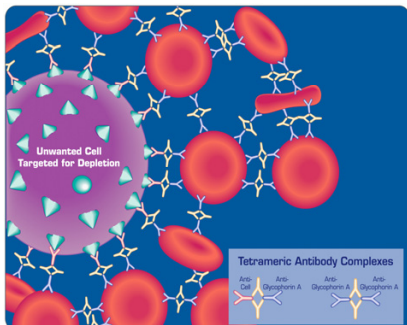


Figure 1.
Rosette of Unwanted Cell and RBCs Formed by RosetteSep™ Tetrameric Antibody Complexes (TAC)

NOTES AND TIPS:

RECOMMENDED MEDIUM. The recommended medium is Phosphate Buffered Saline (PBS) + 2% Fetal Bovine Serum (FBS) (Catalog #07905).

DENSITY MEDIUM. Density medium refers to RosetteSep™ DM-L (Catalog #15705) or Ficoll-Paque™ PLUS (Catalog #07957). Recovery of lymphocytes may be improved with the use of STEMCELL's unique density medium, RosetteSep™ DM-L.

CONVERSION OF g TO RPM. To convert g to rpm, use the following formula:

$$RPM = \sqrt{\frac{RCF}{(1.118 \times 10^{-5}) \times (\text{Radius})}}$$

Where: RCF = relative centrifugal force (g)
RPM = centrifuge speed in revolutions per minute
Radius = radius of rotor in cm

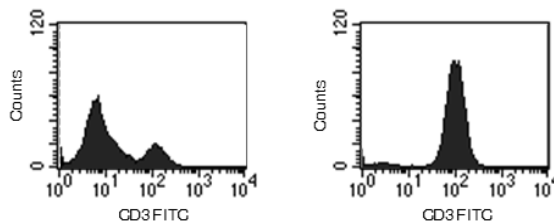
SAMPLES OTHER THAN WHOLE BLOOD. Although RosetteSep™ has been optimized for use with whole blood, cells can be enriched from other sources (e.g. buffy coat or leukapheresis samples). The concentration of nucleated cells in the sample should not exceed 5×10^7 cells/mL, and red blood cells (RBCs) should be present at a ratio of at least 30 - 50 RBCs per nucleated cell.

ASSESSING PURITY. The purity of T cells can be measured by flow cytometry after staining with a fluorochrome-conjugated anti-CD3 antibody (e.g. Anti-Human CD3, Clone UCHT1, Catalog #60011).

TYPICAL ROSETTESEP™ HUMAN T CELL ENRICHMENT PROFILE:

Start*: 20% CD3⁺ Cells

Enriched*: 96% CD3⁺ Cells



Starting with fresh whole blood the CD3⁺ cell content of the enriched fraction typically ranges from 90% - 97%.

*Note: Red blood cells were removed by lysis prior to flow cytometry.

COMPONENT DESCRIPTIONS:

ROSETTESEP™ HUMAN T CELL ENRICHMENT COCKTAIL CODE #15021C.1

This cocktail contains a combination of monoclonal antibodies purified from mouse ascites fluid or hybridoma culture supernatant. The monoclonal antibodies are purified by affinity chromatography using Protein A or Protein G Sepharose. These antibodies are bound in bispecific TAC which are directed against cell surface antigens on human hematopoietic cells (CD16, CD19, CD36, CD56, CD66b) and glycophorin A on RBCs. The mouse monoclonal antibody subclass is IgG₁. It should be noted that this product is a biological reagent, and as such, cannot be completely characterized or quantified. Some variability is unavoidable.

STABILITY AND STORAGE:

ROSETTESEP™ HUMAN T CELL ENRICHMENT COCKTAIL

Product stable at 2 - 8°C until expiry date as indicated on label. Contents have been sterility tested. Do not freeze this product. This product may be shipped at room temperature (15 - 25°C), and should be refrigerated upon receipt.

Ficoll™ and Ficoll-Paque™ PLUS are trademarks of GE Healthcare Ltd.

WWW.STEMCELL.COM

FOR RESEARCH USE ONLY. NOT FOR THERAPEUTIC OR DIAGNOSTIC USE.

IN NORTH AMERICA TOLL-FREE T. 1 800 667 0322 TOLL-FREE F. 1 800 567 2899 T. +1 604 877 0713 F. +1 604 877 0704 E. INFO@STEMCELL.COM
IN EUROPE TOLL-FREE T. 00 800 7836 2355 TOLL-FREE F. 00 800 7836 2300 E. INFO.EU@STEMCELL.COM
IN AUSTRALIA TOLL-FREE T. 1 800 060 350 F. +61 (03) 9338 4320 E. INFO.AUS@STEMCELL.COM
IN SINGAPORE T. +(65) 6776 7754 F. +(65) 6776 7114 E. INFO.SG@STEMCELL.COM

V 1.2.1
#28570

Printed on recycled paper.