

Technical Data Sheet

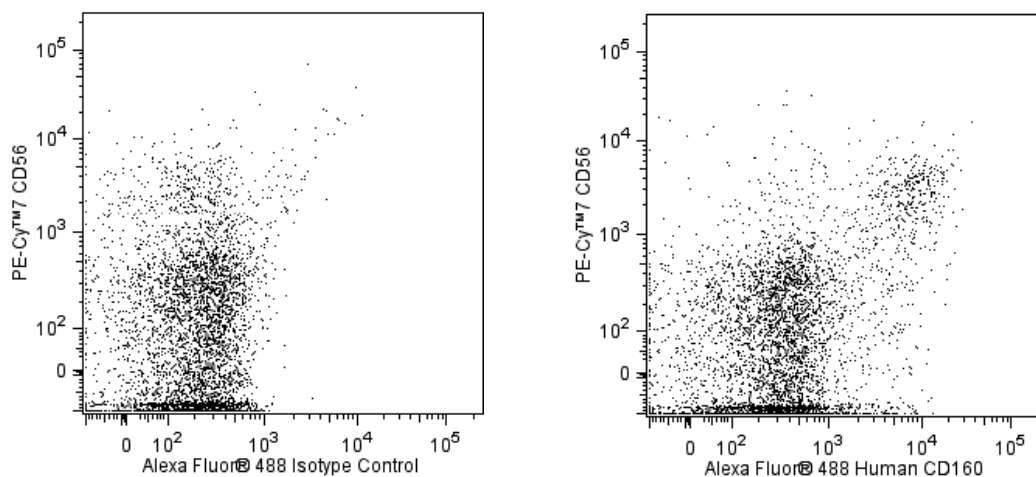
Alexa Fluor® 488 Mouse Anti-Human CD160

Product Information

Material Number:	562351
Alternate Name:	BY55; BY55 antigen; NK1; NK28
Size:	100 tests
Vol. per Test:	5 µl
Clone:	BY55
Immunogen:	Human YT2C2 NK Cell Line
Isotype:	Mouse (BALB/c) IgM
Reactivity:	QC Testing: Human
Storage Buffer:	Aqueous buffered solution containing BSA, protein stabilizer, and ≤0.09% sodium azide.

Description

The BY55 monoclonal antibody specifically binds to the human cell surface molecule, CD160 (also known as BY55). CD160 is a glycosylphosphatidylinositol-anchored glycoprotein member of the immunoglobulin superfamily. It is expressed on cytotoxic αβ CD8+ T cells and natural killer (NK) cells, γδ T cells and intestinal intraepithelial T lymphocytes. CD160 can bind to classical and nonclassical MHC class I molecules. This interaction can costimulate the proliferation of activated human T lymphocytes including CD28-negative T lymphocytes.



Multicolor flow cytometric analysis CD160 expression on human peripheral blood lymphocytes. Human whole blood cells were stained with PE-Cy7™ Mouse Anti-Human CD56 (Cat. No. 557747/560916) and either Alexa Fluor® 488 Mouse IgM, κ Isotype Control (Cat. No. 562409; Left Panel) or Alexa Fluor® 488 Mouse anti-Human CD160 (Cat. No. 562351; Right Panel). The erythrocytes were lysed with BD Pharm Lyse™ Lysing Buffer (Cat. No. 555899). Two-color flow cytometric dot plots showing the correlated expression patterns of CD160 (or Ig isotype control staining) versus CD56 were derived from gated events with the forward and side light-scatter characteristics of viable lymphocytes. Flow cytometry was performed using a BD™ LSR II Flow Cytometer System.

Preparation and Storage

Store undiluted at 4°C and protected from prolonged exposure to light. Do not freeze.

The monoclonal antibody was purified from tissue culture supernatant or ascites by affinity chromatography.

The antibody was conjugated to Alexa Fluor® 488 under optimum conditions, and unreacted Alexa Fluor® 488 was removed.

Application Notes

Application

Flow cytometry

Routinely Tested

BD Biosciences

bdbiosciences.com

United States	Canada	Europe	Japan	Asia Pacific	Latin America/Caribbean
877.232.8995	800.979.9408	32.53.720.550	0120.8555.90	65.6861.0633	55.11.5185.9995

For country contact information, visit bdbiosciences.com/contact

Conditions: The information disclosed herein is not to be construed as a recommendation to use the above product in violation of any patents. BD Biosciences will not be held responsible for patent infringement or other violations that may occur with the use of our products. Purchase does not include or carry any right to resell or transfer this product either as a stand-alone product or as a component of another product. Any use of this product other than the permitted use without the express written authorization of Becton, Dickinson and Company is strictly prohibited.

For Research Use Only. Not for use in diagnostic or therapeutic procedures. Not for resale.

Unless otherwise noted, BD, BD Logo and all other trademarks are property of Becton, Dickinson and Company. © 2011 BD



Suggested Companion Products

Catalog Number	Name	Size	Clone
562409	Alexa Fluor® 488 Mouse IgM, κ Isotype Control	0.1 mg	G155-228
555899	Lysing Buffer	100 ml	(none)
554656	Stain Buffer (FBS)	500 ml	(none)
557747	PE-Cy™7 Mouse Anti-Human CD56	100 tests	B159
560916	PE-Cy™7 Mouse Anti-Human CD56	25 tests	B159

Product Notices

1. This reagent has been pre-diluted for use at the recommended Volume per Test. We typically use 1×10^6 cells in a 100- μ l experimental sample (a test).
2. An isotype control should be used at the same concentration as the antibody of interest.
3. Source of all serum proteins is from USDA inspected abattoirs located in the United States.
4. The Alexa Fluor®, Pacific Blue™, and Cascade Blue® dye antibody conjugates in this product are sold under license from Molecular Probes, Inc. for research use only, excluding use in combination with microarrays, or as analyte specific reagents. The Alexa Fluor® dyes (except for Alexa Fluor® 430), Pacific Blue™ dye, and Cascade Blue® dye are covered by pending and issued patents.
5. Alexa Fluor® 488 fluorochrome emission is collected at the same instrument settings as for fluorescein isothiocyanate (FITC).
6. Alexa Fluor® is a registered trademark of Molecular Probes, Inc., Eugene, OR.
7. Caution: Sodium azide yields highly toxic hydrazoic acid under acidic conditions. Dilute azide compounds in running water before discarding to avoid accumulation of potentially explosive deposits in plumbing.
8. For fluorochrome spectra and suitable instrument settings, please refer to our Multicolor Flow Cytometry web page at www.bdbiosciences.com/colors.
9. Please refer to www.bdbiosciences.com/pharming/protocols for technical protocols.

References

Agrawal S, Marquet J, Freeman GJ, et al. Cutting edge: MHC class I triggering by a novel cell surface ligand costimulates proliferation of activated human T cells. *J Immunol.* 1999; 162(3):1223-1226. (Clone-specific: Flow cytometry)

Anumanthan A, Bensussan A, Boumsell L, et al. Cloning of BY55, a novel Ig superfamily member expressed on NK cells, CTL, and intestinal intraepithelial lymphocytes. *J Immunol.* 1998; 161(6):2780-2790. (Clone-specific: Flow cytometry, Immunoprecipitation)

Maiza H, Leca G, Mansur IG, Schiavon V, Boumsell L, Bensussan A. A novel 80-kD cell surface structure identifies human circulating lymphocytes with natural killer activity. *J Exp Med.* 1993; 178(3):1121-1126. (Clone-specific: Flow cytometry)

BD Biosciences

bdbiosciences.com

United States	Canada	Europe	Japan	Asia Pacific	Latin America/Caribbean
877.232.8995	800.979.9408	32.53.720.550	0120.8555.90	65.6861.0633	55.11.5185.9995

For country contact information, visit bdbiosciences.com/contact

Conditions: The information disclosed herein is not to be construed as a recommendation to use the above product in violation of any patents. BD Biosciences will not be held responsible for patent infringement or other violations that may occur with the use of our products. Purchase does not include or carry any right to resell or transfer this product either as a stand-alone product or as a component of another product. Any use of this product other than the permitted use without the express written authorization of Becton, Dickinson and Company is strictly prohibited.

For Research Use Only. Not for use in diagnostic or therapeutic procedures. Not for resale.

Unless otherwise noted, BD, BD Logo and all other trademarks are property of Becton, Dickinson and Company. © 2011 BD

