

Technical Data Sheet

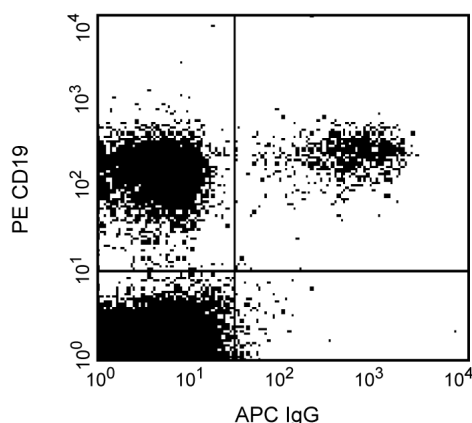
APC Mouse Anti-Human IgG

Product Information

| | |
|------------------|-------------------------------------------------------------------|
| Material Number: | 562025 |
| Size: | 25 tests |
| Vol. per Test: | 20 µl |
| Clone: | G18-145 |
| Isotype: | Mouse IgG1, κ |
| Reactivity: | QC Testing: Human |
| Storage Buffer: | Aqueous buffered solution containing BSA and ≤0.09% sodium azide. |

Description

The G18-145 monoclonal antibody specifically binds to the heavy chain of human immunoglobulin G subclasses: IgG1, IgG2, IgG3 and IgG4. The G18-145 antibody has been reported not to react with the heavy chains of other human immunoglobulin isotypes.



Profile of peripheral blood lymphocytes analyzed by flow cytometry

Preparation and Storage

Store undiluted at 4°C and protected from prolonged exposure to light. Do not freeze.

The monoclonal antibody was purified from tissue culture supernatant or ascites by affinity chromatography.

The antibody was conjugated to APC under optimum conditions, and unconjugated antibody and free APC were removed.

Application Notes

Application

| | |
|----------------|------------------|
| Flow cytometry | Routinely Tested |
|----------------|------------------|

Suggested Companion Products

| Catalog Number | Name | Size | Clone |
|----------------|-----------------------------------|-----------|---------|
| 555413 | PE Mouse Anti-Human CD19 | 100 tests | HIB19 |
| 555751 | APC Mouse IgG1, κ Isotype Control | 100 tests | MOPC-21 |

Product Notices

1. This reagent has been pre-diluted for use at the recommended Volume per Test. We typically use 1×10^6 cells in a 100-µl experimental sample (a test).
2. Since applications vary, each investigator should titrate the reagent to obtain optimal results.
3. Please refer to www.bdbiosciences.com/pharmingen/protocols for technical protocols.
4. For fluorochrome spectra and suitable instrument settings, please refer to our Fluorochrome Web Page at www.bdbiosciences.com/colors.
5. Caution: Sodium azide yields highly toxic hydrazoic acid under acidic conditions. Dilute azide compounds in running water before discarding to avoid accumulation of potentially explosive deposits in plumbing.
6. Source of all serum proteins is from USDA inspected abattoirs located in the United States.
7. This APC-conjugated reagent can be used in any flow cytometer equipped with a dye, HeNe, or red diode laser.
8. An isotype control should be used at the same concentration as the antibody of interest.

BD Biosciences

bdbiosciences.com

| | | | | | |
|---------------|--------------|---------------|--------------|--------------|-------------------------|
| United States | Canada | Europe | Japan | Asia Pacific | Latin America/Caribbean |
| 877.232.8995 | 888.268.5430 | 32.53.720.550 | 0120.8555.90 | 65.6861.0633 | 0800.771.7157 |

For country-specific contact information, visit bdbiosciences.com/how_to_order/

Conditions: The information disclosed herein is not to be construed as a recommendation to use the above product in violation of any patents. BD Biosciences will not be held responsible for patent infringement or other violations that may occur with the use of our products. Purchase does not include or carry any right to resell or transfer this product either as a stand-alone product or as a component of another product. Any use of this product other than the permitted use without the express written authorization of Becton Dickinson and Company is strictly prohibited.

For Research Use Only. Not for use in diagnostic or therapeutic procedures. Not for resale.

BD, BD Logo and all other trademarks are the property of Becton, Dickinson and Company. ©2011 BD



References

Zola H, Macardle PJ, Flego L, Webster J. The expression of sub-population markers on B cells: a re-evaluation using high-sensitivity fluorescence flow cytometry. *Dis Markers*. 1991; 9(2):103-118. (Biology)