

Technical Data Sheet

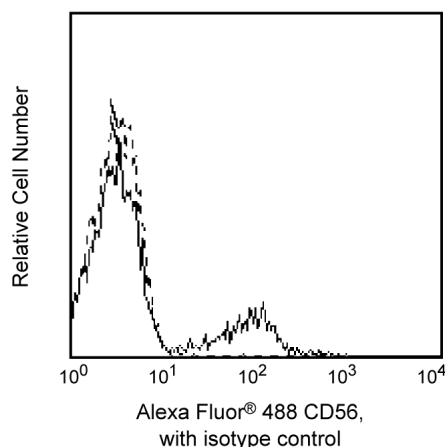
Alexa Fluor® 488 Mouse Anti-Human CD56

Product Information

Material Number:	561905
Alternate Name:	NCAM1; NCAM-1; Neural cell adhesion molecule 1; NCAM; MSK39
Size:	25 tests
Vol. per Test:	5 µl
Clone:	B159
Isotype:	Mouse IgG1, κ
Reactivity:	QC Testing: Human
Workshop:	V NK75
Storage Buffer:	Aqueous buffered solution containing BSA and ≤0.09% sodium azide.

Description

The B159 monoclonal antibody specifically reacts with CD56. CD56 is a heavily glycosylated protein that is present on a subpopulation of peripheral blood large granular lymphocytes which demonstrate natural killer activity. CD56 is also expressed on a subset of T cells but is not expressed on myeloid cells, erythrocytes or B cells. This antigen is a pan-NK-cell marker. CD56 is virtually identical to an isoform of the neutral cell adhesion molecule (NCAM), a structure mediating homotypic and heterotypic cell-cell interactions.



Profile of peripheral blood lymphocytes analyzed by flow cytometry.

Preparation and Storage

Store undiluted at 4°C and protected from prolonged exposure to light. Do not freeze.

The monoclonal antibody was purified from tissue culture supernatant or ascites by affinity chromatography.

The antibody was conjugated to Alexa Fluor® 488 under optimum conditions, and unreacted Alexa Fluor® 488 was removed.

Application Notes

Application

Flow cytometry	Routinely Tested
----------------	------------------

Suggested Companion Products

Catalog Number	Name	Size	Clone
557702	Alexa Fluor® 488 Mouse IgG1 κ Isotype Control	100 tests	MOPC-21
554656	Stain Buffer (FBS)	500 ml	(none)

Product Notices

1. This reagent has been pre-diluted for use at the recommended Volume per Test. We typically use 1×10^6 cells in a 100-µl experimental sample (a test).
2. Since applications vary, each investigator should titrate the reagent to obtain optimal results.
3. Please refer to www.bdbiosciences.com/pharmingen/protocols for technical protocols.
4. For fluorochrome spectra and suitable instrument settings, please refer to our Fluorochrome Web Page at www.bdbiosciences.com/colors.

BD Biosciences

bdbiosciences.com

United States	Canada	Europe	Japan	Asia Pacific	Latin America/Caribbean
877.232.8995	888.268.5430	32.53.720.550	0120.8555.90	65.6861.0633	0800.771.7157

For country-specific contact information, visit bdbiosciences.com/how_to_order/

Conditions: The information disclosed herein is not to be construed as a recommendation to use the above product in violation of any patents. BD Biosciences will not be held responsible for patent infringement or other violations that may occur with the use of our products. Purchase does not include or carry any right to resell or transfer this product either as a stand-alone product or as a component of another product. Any use of this product other than the permitted use without the express written authorization of Becton Dickinson and Company is strictly prohibited.

For Research Use Only. Not for use in diagnostic or therapeutic procedures. Not for resale.

BD, BD Logo and all other trademarks are the property of Becton, Dickinson and Company. ©2011 BD



5. The Alexa Fluor®, Pacific Blue™, and Cascade Blue® dye antibody conjugates in this product are sold under license from Molecular Probes, Inc. for research use only, excluding use in combination with microarrays, or as analyte specific reagents. The Alexa Fluor® dyes (except for Alexa Fluor® 430), Pacific Blue™ dye, and Cascade Blue® dye are covered by pending and issued patents.
6. Alexa Fluor® 488 fluorochrome emission is collected at the same instrument settings as for fluorescein isothiocyanate (FITC).
7. Caution: Sodium azide yields highly toxic hydrazoic acid under acidic conditions. Dilute azide compounds in running water before discarding to avoid accumulation of potentially explosive deposits in plumbing.
8. Source of all serum proteins is from USDA inspected abattoirs located in the United States.
9. Alexa Fluor® is a registered trademark of Molecular Probes, Inc., Eugene, OR.
10. An isotype control should be used at the same concentration as the antibody of interest.

References

Schlossman S, Boumell L, et al, ed. *Leucocyte Typing V*. New York: Oxford University Press; 1995. (Biology)

Schlossman SF, Boumsell L, Gilks W, et al, ed. *Leukocyte Typing V: White Cell Differentiation Antigens*. New York: Oxford University Press; 1995.

(Clone-specific)