

## Technical Data Sheet

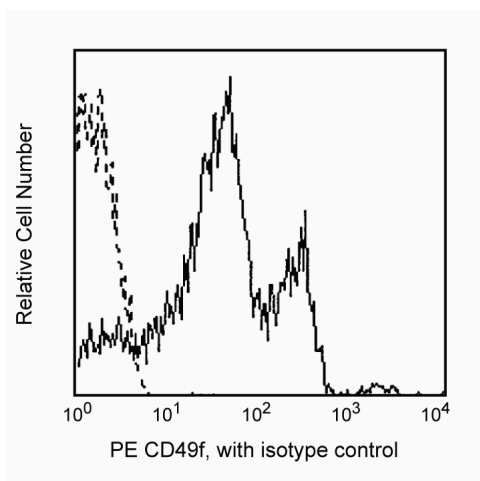
## PE Rat Anti-Human CD49f

## Product Information

<b>Material Number:</b>	<b>561894</b>
<b>Alternate Name:</b>	Integrin $\alpha 6$ chain
<b>Size:</b>	25 tests
<b>Vol. per Test:</b>	20 $\mu$ l
<b>Clone:</b>	GoH3
<b>Immunogen:</b>	Mouse mammary tumor cells
<b>Isotype:</b>	Rat (SD) IgG2a, $\kappa$
<b>Reactivity:</b>	QC Testing: Human Tested in Development: Dog, Mouse, Pig
<b>Workshop:</b>	IV P55
<b>Storage Buffer:</b>	Aqueous buffered solution containing BSA and $\leq 0.09\%$ sodium azide.

## Description

Reacts with CD49f or integrin  $\alpha 6$  chain, a 150 kDa transmembrane protein, member of extracellular matrix and cell adhesion receptor family.  $\alpha 6$  associates with integrin  $\beta 1$  chain (CD29) to form VLA-6 and with integrin  $\beta 4$  chain (CD104) to form the  $\alpha 6 \beta 4$  complex, also known as the laminin and kalinin receptor. CD49f is expressed mainly on T cells, monocytes, platelets, epithelial and endothelial cells, perineural cells and trophoblasts of placenta. GoH3 recognizes an extracellular epitope of integrin  $\alpha 6$  on human, mouse and bovine cells. GoH3 has been reported to block the binding of integrin  $\alpha 6$  to laminin P1 and E8 fragments.



Profile of peripheral blood lymphocytes analyzed on a FACSscan (BDIS, San Jose, CA)

## Preparation and Storage

Store undiluted at 4°C and protected from prolonged exposure to light. Do not freeze.

The monoclonal antibody was purified from tissue culture supernatant or ascites by affinity chromatography.

The antibody was conjugated with R-PE under optimum conditions, and unconjugated antibody and free PE were removed.

## Application Notes

## Application

Flow cytometry	Routinely Tested
----------------	------------------

## Suggested Companion Products

Catalog Number	Name	Size	Clone
555844	PE Rat IgG2a, $\kappa$ Isotype Control	100 tests	R35-95
554656	Stain Buffer (FBS)	500 ml	(none)

## BD Biosciences

bdbiosciences.com

United States	Canada	Europe	Japan	Asia Pacific	Latin America/Caribbean
877.232.8995	888.268.5430	32.53.720.550	0120.8555.90	65.6861.0633	0800.771.7157

For country-specific contact information, visit [bdbiosciences.com/how\\_to\\_order/](http://bdbiosciences.com/how_to_order/)

Conditions: The information disclosed herein is not to be construed as a recommendation to use the above product in violation of any patents. BD Biosciences will not be held responsible for patent infringement or other violations that may occur with the use of our products. Purchase does not include or carry any right to resell or transfer this product either as a stand-alone product or as a component of another product. Any use of this product other than the permitted use without the express written authorization of Becton Dickinson and Company is strictly prohibited.

For Research Use Only. Not for use in diagnostic or therapeutic procedures. Not for resale.

BD, BD Logo and all other trademarks are the property of Becton, Dickinson and Company. ©2011 BD



## Product Notices

1. This reagent has been pre-diluted for use at the recommended Volume per Test. We typically use  $1 \times 10^6$  cells in a 100- $\mu$ l experimental sample (a test).
2. Please refer to [www.bdbiosciences.com/pharmingen/protocols](http://www.bdbiosciences.com/pharmingen/protocols) for technical protocols.
3. For fluorochrome spectra and suitable instrument settings, please refer to our Fluorochrome Web Page at [www.bdbiosciences.com/colors](http://www.bdbiosciences.com/colors).
4. Caution: Sodium azide yields highly toxic hydrazoic acid under acidic conditions. Dilute azide compounds in running water before discarding to avoid accumulation of potentially explosive deposits in plumbing.
5. Source of all serum proteins is from USDA inspected abattoirs located in the United States.
6. An isotype control should be used at the same concentration as the antibody of interest.

## References

Aumailley M, Timpl R, Sonnenberg A. Antibody to integrin alpha 6 subunit specifically inhibits cell-binding to laminin fragment 8. *Exp Cell Res.* 1990; 188(1):55-60. (Biology)

Knapp W, Dorken B, Rieber EP, et al, ed. *Leucocyte Typing IV*. New York: Oxford University Press; 1989:1-1208. (Clone-specific)

Sonnenberg A, Daams H, Van der Valk MA, Hilkens J, Hilgers J. Development of mouse mammary gland: identification of stages in differentiation of luminal and myoepithelial cells using monoclonal antibodies and polyvalent antiserum against keratin. *J Histochem Cytochem.* 1986; 34(8):1037-1046. (Immunogen)