

Technical Data Sheet

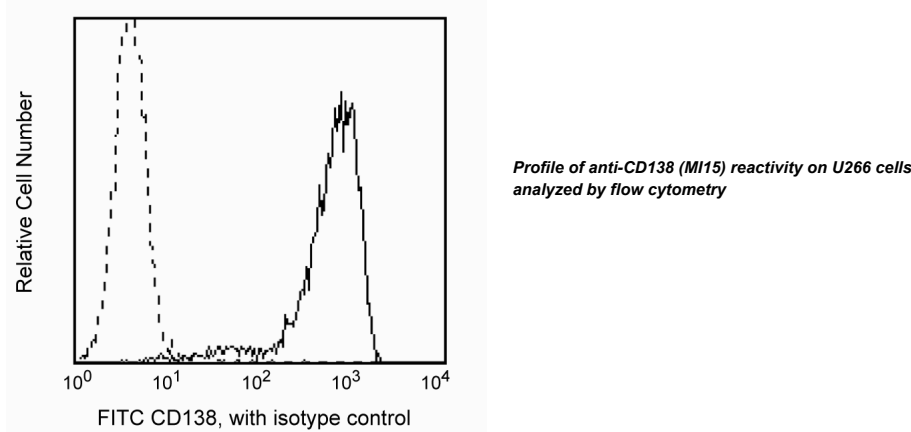
FITC Mouse Anti-Human CD138

Product Information

Material Number:	561703
Alternate Name:	Syndecan; SDC; Syndecan 1; SDC1; SYND1
Size:	25 tests
Vol. per Test:	20 µl
Clone:	MI15
Isotype:	Mouse IgG1, κ
Reactivity:	QC Testing: Human
Workshop:	VI BP100, B005
Storage Buffer:	Aqueous buffered solution containing BSA and ≤0.09% sodium azide.

Description

The MI15 monoclonal antibody specifically binds to CD138 (Syndecan-1), an 85-92 kDa single chain transmembrane protein, strongly expressed on multiple-myeloma-derived cell lines and malignant plasma cell populations. It is also expressed on pre-B cells, immature B cells, and plasma cells, but not on mature circulating B-lymphocytes. Syndecan-1 is a member of the family of transmembrane heparan sulfate proteoglycans. It is also expressed on some non-hematopoietic cells, including embryonic mesenchymal cells, vascular smooth muscle cells, endothelial and neural cells. CD138 binds to many extracellular matrix proteins through its heparan sulfate side-chains, like fibronectin, collagen types I, III, and V, tenascin, thrombospondin, and antithrombin III. It is considered an extracellular matrix receptor that may serve as a co-receptor for fibroblast growth factor and related molecules. Monoclonal antibody MI15 blocks the binding of clone B-B4 but not clone DL-101 (other anti-syndecan-1 antibodies) by flow cytometric analysis.



Preparation and Storage

Store undiluted at 4°C and protected from prolonged exposure to light. Do not freeze.  
The monoclonal antibody was purified from tissue culture supernatant or ascites by affinity chromatography.  
The antibody was conjugated with FITC under optimum conditions, and unreacted FITC was removed.

Application Notes

Application

Flow cytometry	Routinely Tested
----------------	------------------

Suggested Companion Products

Catalog Number	Name	Size	Clone
555748	FITC Mouse IgG1, κ Isotype Control	100 tests	MOPC-21
554656	Stain Buffer (FBS)	500 ml	(none)

BD Biosciences

[bdbiosciences.com](http://bdbiosciences.com)  
United States 877.232.8995 Canada 888.268.5430 Europe 32.53.720.550 Japan 0120.8555.90 Asia Pacific 65.6861.0633 Latin America/Caribbean 0800.771.7157  
For country-specific contact information, visit [bdbiosciences.com/how\\_to\\_order/](http://bdbiosciences.com/how_to_order/)  
Conditions: The information disclosed herein is not to be construed as a recommendation to use the above product in violation of any patents. BD Biosciences will not be held responsible for patent infringement or other violations that may occur with the use of our products. Purchase does not include or carry any right to resell or transfer this product either as a stand-alone product or as a component of another product. Any use of this product other than the permitted use without the express written authorization of Becton Dickinson and Company is strictly prohibited.  
For Research Use Only. Not for use in diagnostic or therapeutic procedures. Not for resale.  
BD, BD Logo and all other trademarks are the property of Becton, Dickinson and Company. ©2011 BD



## Product Notices

1. This reagent has been pre-diluted for use at the recommended Volume per Test. We typically use  $1 \times 10^6$  cells in a 100- $\mu$ l experimental sample (a test).
2. Since applications vary, each investigator should titrate the reagent to obtain optimal results.
3. Please refer to [www.bdbiosciences.com/pharming/en/protocols](http://www.bdbiosciences.com/pharming/en/protocols) for technical protocols.
4. For fluorochrome spectra and suitable instrument settings, please refer to our Fluorochrome Web Page at [www.bdbiosciences.com/colors](http://www.bdbiosciences.com/colors).
5. Caution: Sodium azide yields highly toxic hydrazoic acid under acidic conditions. Dilute azide compounds in running water before discarding to avoid accumulation of potentially explosive deposits in plumbing.
6. Source of all serum proteins is from USDA inspected abattoirs located in the United States.
7. An isotype control should be used at the same concentration as the antibody of interest.

## References

Barclay NA, Brown MH, Birkeland ML, et al, ed. *The Leukocyte Antigen FactsBook*. San Diego, CA: Academic Press; 1997. (Biology)

Costes V, Magen V, Legouffe E, et al. The Mi15 monoclonal antibody (anti-syndecan-1) is a reliable marker for quantifying plasma cells in paraffin-embedded bone marrow biopsy specimens. *Hum Pathol*. 1999; 30(12):1405-1411. (Biology)

Gattei V, Godeas C, Degan M, Rossi FM, Aldinucci D, Pinto A. Characterization of anti-CD138 monoclonal antibodies as tools for investigating the molecular polymorphism of syndecan-1 in human lymphoma cells. *Br J Haematol*. 1999; 104(1):152-162. (Biology)

Kishimoto T, von dem Borne AEG, Goyert SM, et al., ed. *Leucocyte Typing VI: White Cell Differentiation Antigens*. London: Garland Publishing; 1997. (Clone-specific)