

## Technical Data Sheet

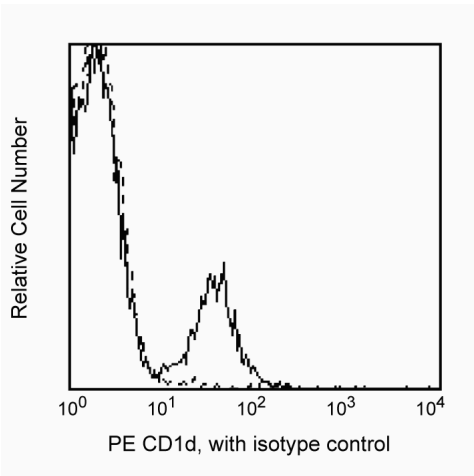
## PE Mouse Anti-Human CD1d

## Product Information

Material Number:	561757
Size:	25 tests
Vol. per Test:	20 µl
Clone:	CD1d42
Isotype:	Mouse IgG1, κ
Reactivity:	QC Testing: Human
Storage Buffer:	Aqueous buffered solution containing BSA and ≤0.09% sodium azide.

## Description

Reacts with a glycosylated type I transmembrane α chain (43-49 kDa) non-covalently associated with β2-microglobulin. CD1d is a member of the CD1 family of molecules, which belong to the immunoglobulin superfamily. Sequence homology data classifies the CD1 molecules into two groups. Group 1 includes CD1a, CD1b and CD1c molecules; group 2 includes CD1d molecules and their homologues in other species. CD1d is expressed on human intestinal epithelial cells (IEC). CD1d42 monoclonal antibody reacts with peripheral blood B cells coexpressing CD19 and CD45RA. It is not seen on CD3[+], or CD45RO[+] cells. Studies suggest that CD1d participates in lipid antigen presentation.



Profile of peripheral blood lymphocytes analyzed by flow cytometry

## Preparation and Storage

Store undiluted at 4°C.

The monoclonal antibody was purified from tissue culture supernatant or ascites by affinity chromatography.

The antibody was conjugated with R-PE under optimum conditions, and unconjugated antibody and free PE were removed.

## Application Notes

## Application

Flow cytometry	Routinely Tested
----------------	------------------

## Suggested Companion Products

Catalog Number	Name	Size	Clone
555749	PE Mouse IgG1, κ Isotype Control	100 tests	MOPC-21

## Product Notices

1. This reagent has been pre-diluted for use at the recommended Volume per Test. We typically use  $1 \times 10^6$  cells in a 100-µl experimental sample (a test).
2. Please refer to [www.bdbiosciences.com/pharmingen/protocols](http://www.bdbiosciences.com/pharmingen/protocols) for technical protocols.
3. Caution: Sodium azide yields highly toxic hydrazoic acid under acidic conditions. Dilute azide compounds in running water before discarding to avoid accumulation of potentially explosive deposits in plumbing.
4. Source of all serum proteins is from USDA inspected abattoirs located in the United States.
5. For fluorochrome spectra and suitable instrument settings, please refer to our Fluorochrome Web Page at [www.bdbiosciences.com/colors](http://www.bdbiosciences.com/colors).
6. An isotype control should be used at the same concentration as the antibody of interest.

## BD Biosciences

[bdbiosciences.com](http://bdbiosciences.com)

United States	Canada	Europe	Japan	Asia Pacific	Latin America/Caribbean
877.232.8995	888.268.5430	32.53.720.550	0120.8555.90	65.6861.0633	0800.771.7157

For country-specific contact information, visit [bdbiosciences.com/how\\_to\\_order/](http://bdbiosciences.com/how_to_order/)

Conditions: The information disclosed herein is not to be construed as a recommendation to use the above product in violation of any patents. BD Biosciences will not be held responsible for patent infringement or other violations that may occur with the use of our products. Purchase does not include or carry any right to resell or transfer this product either as a stand-alone product or as a component of another product. Any use of this product other than the permitted use without the express written authorization of Becton Dickinson and Company is strictly prohibited.

For Research Use Only. Not for use in diagnostic or therapeutic procedures. Not for resale.

BD, BD Logo and all other trademarks are the property of Becton, Dickinson and Company. ©2011 BD



## References

- Hong S, Scherer DC, Singh N. Lipid antigen presentation in the immune system: lessons learned from CD1d knockout mice. *Immunol Rev.* 1999; 169:31-44. (Biology)
- Kishimoto T, von dem Borne AEG, Goyert SM, et al., ed. *Leucocyte Typing VI: White Cell Differentiation Antigens*. London: Garland Publishing; 1997. (Biology)