

Technical Data Sheet

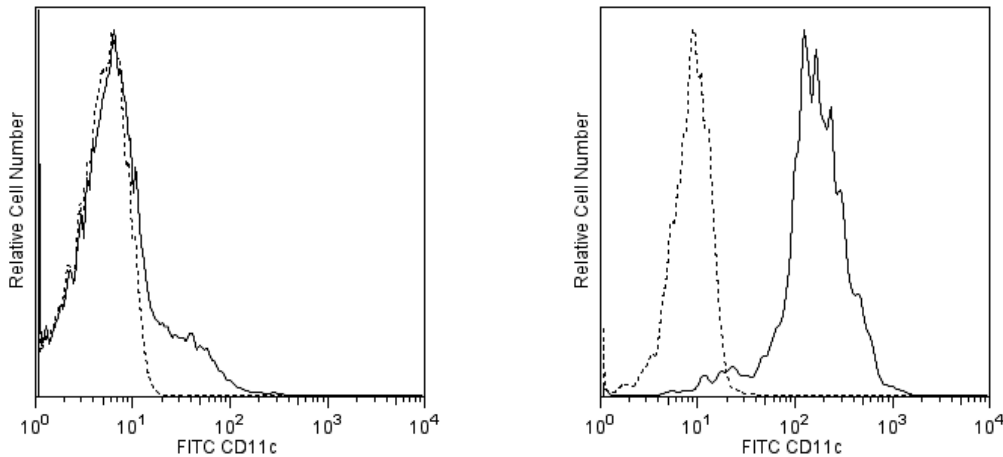
FITC Mouse Anti-Human CD11c

Product Information

Material Number:	561355
Alternate Name:	ITGAX; AlphaX integrin chain; Axb2; Integrin alpha-X; CR4; Leu M5; SLEB6
Size:	100 tests
Vol. per Test:	5 µl
Clone:	B-ly6
Isotype:	Mouse IgG1, κ
Reactivity:	QC Testing: Human
Workshop:	IV N012
Storage Buffer:	Aqueous buffered solution containing BSA and ≤0.09% sodium azide.

Description

The B-ly6 monoclonal antibody specifically binds to the 150 kDa adhesion glycoprotein CD11c (p150, integrin α chain). CD11c is expressed on dendritic cells, monocytes, macrophages, granulocytes, NK cells and subsets of B and T cells. It associates with CD18 to form the CD11c/CD18 complex that binds fibrinogen and has been reported to be a receptor for iC3b and ICAM-1. Reports indicate that CD11c/CD18 plays a role as an adhesion molecule that mediates cellular binding to ligands expressed on stimulated epithelium and endothelium.



**Flow cytometric analysis of CD11c on human peripheral lymphocytes and monocytes.** Human whole blood was stained with the FITC Mouse anti-Human CD11c antibody (Cat. No. 561355; solid line histogram) or with a FITC Mouse IgG1, κ Isotype Control (Cat. No. 555748; dashed line histogram). The erythrocytes were lysed with BD PharmLyse™ Lysing Buffer (Cat. No. 555899). The fluorescence histograms were derived from events with the forward and side light-scatter characteristics of viable lymphocytes (Left Panel) or monocytes (Right Panel). Flow cytometry was performed using a BD™ LSR II Flow Cytometer System.

Preparation and Storage

The monoclonal antibody was purified from tissue culture supernatant or ascites by affinity chromatography. The antibody was conjugated with FITC under optimum conditions, and unreacted FITC was removed. Store undiluted at 4°C and protected from prolonged exposure to light. Do not freeze.

Application Notes

Application

Flow cytometry	Routinely Tested
----------------	------------------

BD Biosciences

bdbiosciences.com

United States	Canada	Europe	Japan	Asia Pacific	Latin America/Caribbean
877.232.8995	888.268.5430	32.53.720.550	0120.8555.90	65.6861.0633	0800.771.7157

For country-specific contact information, visit [bdbiosciences.com/how\\_to\\_order/](http://bdbiosciences.com/how_to_order/)

Conditions: The information disclosed herein is not to be construed as a recommendation to use the above product in violation of any patents. BD Biosciences will not be held responsible for patent infringement or other violations that may occur with the use of our products. Purchase does not include or carry any right to resell or transfer this product either as a stand-alone product or as a component of another product. Any use of this product other than the permitted use without the express written authorization of Becton Dickinson and Company is strictly prohibited.

For Research Use Only. Not for use in diagnostic or therapeutic procedures. Not for resale.

BD, BD Logo and all other trademarks are the property of Becton, Dickinson and Company. ©2011 BD



## Suggested Companion Products

Catalog Number	Name	Size	Clone
555899	Lysing Buffer	100 ml	(none)
555748	FITC Mouse IgG1, $\kappa$ Isotype Control	100 tests	MOPC-21
554656	Stain Buffer (FBS)	500 ml	(none)

## Product Notices

1. This reagent has been pre-diluted for use at the recommended Volume per Test. We typically use  $1 \times 10^6$  cells in a 100- $\mu$ l experimental sample (a test).
2. An isotype control should be used at the same concentration as the antibody of interest.
3. Source of all serum proteins is from USDA inspected abattoirs located in the United States.
4. Please refer to [www.bdbiosciences.com/pharming/en/protocols](http://www.bdbiosciences.com/pharming/en/protocols) for technical protocols.
5. Caution: Sodium azide yields highly toxic hydrazoic acid under acidic conditions. Dilute azide compounds in running water before discarding to avoid accumulation of potentially explosive deposits in plumbing.
6. For fluorochrome spectra and suitable instrument settings, please refer to our Fluorochrome Web Page at [www.bdbiosciences.com/colors](http://www.bdbiosciences.com/colors).

## References

Barclay NA, Brown MH, Birkeland ML, et al, ed. *The Leukocyte Antigen FactsBook*. San Diego, CA: Academic Press; 1997. (Biology)  
Knapp W, Dorken B, Rieber EP, et al, ed. *Leucocyte Typing IV*. New York: Oxford University Press; 1989:1-1208. (Biology)  
Stacker SA, Springer TA. Leukocyte integrin P150,95 (CD11c/CD18) functions as an adhesion molecule binding to a counter-receptor on stimulated endothelium. *J Immunol*. 1991; 146(2):648-655. (Biology)  
van Vugt MJ, van den Herik-Oudijk IE, van de Winkle JG. Binding of PE-CY5 conjugates to the human high-affinity receptor for IgG (CD64). *Blood*. 1996; 88(6):2358-2361. (Biology)