

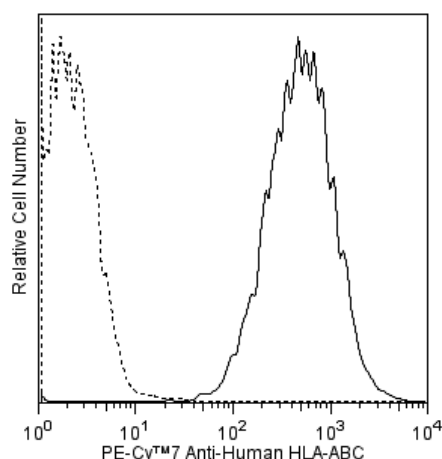
Technical Data Sheet

PE-Cy™7 Mouse Anti-Human HLA-ABC**Product Information**

Material Number:	561349
Alternate Name:	Major histocompatibility complex, class I, A,B,C; HLA class I A,B,C
Size:	50 tests
Vol. per Test:	5 µl
Clone:	G46-2.6
Isotype:	Mouse IgG1, κ
Reactivity:	QC Testing: Human
Storage Buffer:	Aqueous buffered solution containing BSA and ≤0.09% sodium azide.

Description

The G46-2.6 monoclonal antibody specifically binds to a monomorphic epitope on the alpha chain of major histocompatibility (MHC) HLA Class I antigens. Class I MHC antigens are widely distributed on human nucleated cells.



Flow cytometric analysis of HLA-ABC expression on human peripheral blood lymphocytes. Whole blood was stained with either PE-Cy™7 Mouse anti-Human HLA-ABC antibody (Cat. No. 561349; solid line histogram) or with a PE-Cy™7 Mouse IgG1, κ Isotype Control (Cat. No. 557872; dashed line histogram). The erythrocytes were lysed with BD PharmLyse™ Lysing Buffer (Cat. No. 555899). The fluorescence histograms were derived from events with the forward and side light-scatter characteristics of viable lymphocytes. Flow cytometry was performed using a BD™ LSR II Flow Cytometer System.

Preparation and Storage

The monoclonal antibody was purified from tissue culture supernatant or ascites by affinity chromatography.

The antibody was conjugated with PE-Cy7 under optimum conditions, and unconjugated antibody and free PE-Cy7 were removed.

Store undiluted at 4°C and protected from prolonged exposure to light. Do not freeze.

Application Notes**Application**

Flow cytometry	Routinely Tested
----------------	------------------

Suggested Companion Products

Catalog Number	Name	Size	Clone
555899	Lysing Buffer	100 ml	(none)
554656	Stain Buffer (FBS)	500 ml	(none)
557872	PE-Cy™7 Mouse IgG1 κ Isotype Control	100 tests	MOPC-21

BD Biosciences

bdbiosciences.com

United States	Canada	Europe	Japan	Asia Pacific	Latin America/Caribbean
877.232.8995	888.268.5430	32.53.720.550	0120.8555.90	65.6861.0633	0800.771.7157

For country-specific contact information, visit bdbiosciences.com/how_to_order/

Conditions: The information disclosed herein is not to be construed as a recommendation to use the above product in violation of any patents. BD Biosciences will not be held responsible for patent infringement or other violations that may occur with the use of our products. Purchase does not include or carry any right to resell or transfer this product either as a stand-alone product or as a component of another product. Any use of this product other than the permitted use without the express written authorization of Becton Dickinson and Company is strictly prohibited.

For Research Use Only. Not for use in diagnostic or therapeutic procedures. Not for resale.

BD, BD Logo and all other trademarks are the property of Becton, Dickinson and Company. ©2011 BD



Product Notices

1. This reagent has been pre-diluted for use at the recommended Volume per Test. We typically use 1×10^6 cells in a 100- μ l experimental sample (a test).
2. An isotype control should be used at the same concentration as the antibody of interest.
3. Source of all serum proteins is from USDA inspected abattoirs located in the United States.
4. Please refer to www.bdbiosciences.com/pharming/en/protocols for technical protocols.
5. Cy is a trademark of Amersham Biosciences Limited. This conjugated product is sold under license to the following patents: US Patent Nos. 5,486,616; 5,569,587; 5,569,766; 5,627,027.
6. Please observe the following precautions: Absorption of visible light can significantly alter the energy transfer occurring in any tandem fluorochrome conjugate; therefore, we recommend that special precautions be taken (such as wrapping vials, tubes, or racks in aluminum foil) to prevent exposure of conjugated reagents, including cells stained with those reagents, to room illumination.
7. Caution: Sodium azide yields highly toxic hydrazoic acid under acidic conditions. Dilute azide compounds in running water before discarding to avoid accumulation of potentially explosive deposits in plumbing.
8. For fluorochrome spectra and suitable instrument settings, please refer to our Fluorochrome Web Page at www.bdbiosciences.com/colors.
9. Warning: Some APC-Cy7 and PE-Cy7 conjugates show changes in their emission spectrum with prolonged exposure to formaldehyde. If you are unable to analyze fixed samples within four hours, we recommend that you use BD™ Stabilizing Fixative (Cat. No. 338036).
10. This product is subject to proprietary rights of Amersham Biosciences Corp. and Carnegie Mellon University and made and sold under license from Amersham Biosciences Corp. This product is licensed for sale only for research. It is not licensed for any other use. If you require a commercial license to use this product and do not have one return this material, unopened to BD Biosciences, 10975 Torreyana Rd, San Diego, CA 92121 and any money paid for the material will be refunded.
11. PE-Cy7 is a tandem fluorochrome composed of R-phycoerythrin (PE), which is excited by 488-nm light and serves as an energy donor, coupled to the cyanine dye Cy7, which acts as an energy acceptor and fluoresces maximally at 780 nm. PE-Cy7 tandem fluorochrome emission is collected in a detector for fluorescence wavelengths of 750 nm and higher. Although every effort is made to minimize the lot-to-lot variation in the efficiency of the fluorochrome energy transfer, differences in the residual emission from PE may be observed. Therefore, we recommend that individual compensation controls be performed for every PE-Cy7 conjugate. PE-Cy7 is optimized for use with a single argon ion laser emitting 488-nm light, and there is no significant overlap between PE-Cy7 and FITC emission spectra. When using dual-laser cytometers, which may directly excite both PE and Cy7, we recommend the use of cross-beam compensation during data acquisition or software compensation during data analysis.

References

Barclay NA, Brown MH, Birkeland ML, et al, ed. *The Leukocyte Antigen FactsBook*. San Diego, CA: Academic Press; 1997. (Biology)
Sopper S, Stahl-Hennig C, Demuth M, Johnston IC, Dorries R, ter Meulen V. Lymphocyte subsets and expression of differentiation markers in blood and lymphoid organs of rhesus monkeys. *Cytometry*. 1997; 29(4):351-362. (Biology)