

Technical Data Sheet

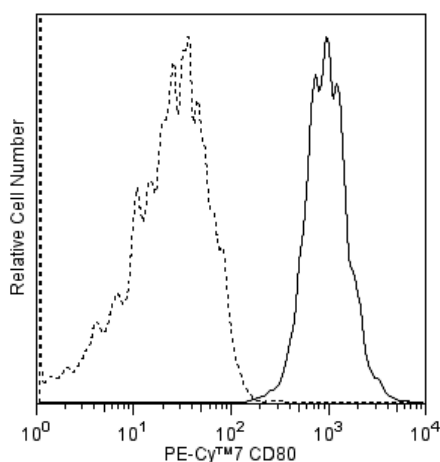
PE-Cy™7 Mouse Anti-Human CD80

Product Information

Material Number:	561135
Alternate Name:	B7.1; B7-1; Activation B7-1 antigen; B7; BB1; CD28LG; CD28LG1; LAB7
Size:	50 tests
Vol. per Test:	5 µl
Clone:	L307.4
Isotype:	Mouse IgG1, κ
Reactivity:	QC Testing: Human
Workshop:	V B7.5
Storage Buffer:	Aqueous buffered solution containing BSA and ≤0.09% sodium azide.

Description

The L307.4 monoclonal antibody specifically reacts with B7/BB1, a 60 kDa transmembrane glycoprotein which was clustered as CD80 in the Fifth International Workshop on Human Leukocyte Differentiation Antigens. CD80, a member of the Ig supergene family, is expressed on activated B cells, macrophages, and dendritic cells. It is the ligand for two molecules expressed on T cells, CD28 and CD152 (CTLA-4). CD80 is also expressed on activated CD4-positive and CD8-positive T cells, appearing late after activation suggesting that activated T cells may be capable of autocrine costimulation via the CD28 activation pathway. The binding of CD28 by anti-CD28 or by CD80 results in T-cell activation and a signal for IL-2 production.



Flow cytometric analysis of CD80 expression on Raji cells. Human Raji cells were stained with either PE-Cy™7 Mouse Anti-Human CD80 antibody (Cat. No. 561135; solid line histogram) or with a PE-Cy™7 Mouse IgG1, κ Isotype Control (Cat. No. 557872; dashed line histogram). The fluorescence histograms were derived from gated events with the forward and side light-scatter characteristics of viable cells. Flow cytometry was performed on a BD LSR™ II Flow Cytometry System.

Preparation and Storage

Store undiluted at 4°C and protected from prolonged exposure to light. Do not freeze.

The antibody was conjugated with PE-Cy7 under optimum conditions, and unconjugated antibody and free PE-Cy7 were removed.

The monoclonal antibody was purified from tissue culture supernatant or ascites by affinity chromatography.

Application Notes

Application

Flow cytometry	Routinely Tested
----------------	------------------

Suggested Companion Products

Catalog Number	Name	Size	Clone
557872	PE-Cy™7 Mouse IgG1 κ Isotype Control	100 tests	MOPC-21

BD Biosciences

bdbiosciences.com

United States	Canada	Europe	Japan	Asia Pacific	Latin America/Caribbean
877.232.8995	888.268.5430	32.53.720.550	0120.8555.90	65.6861.0633	0800.771.7157

For country-specific contact information, visit bdbiosciences.com/how_to_order/

Conditions: The information disclosed herein is not to be construed as a recommendation to use the above product in violation of any patents. BD Biosciences will not be held responsible for patent infringement or other violations that may occur with the use of our products. Purchase does not include or carry any right to resell or transfer this product either as a stand-alone product or as a component of another product. Any use of this product other than the permitted use without the express written authorization of Becton Dickinson and Company is strictly prohibited.

For Research Use Only. Not for use in diagnostic or therapeutic procedures. Not for resale.

BD, BD Logo and all other trademarks are the property of Becton, Dickinson and Company. ©2011 BD



Product Notices

1. This reagent has been pre-diluted for use at the recommended Volume per Test. We typically use 1×10^6 cells in a 100- μ l experimental sample (a test).
2. An isotype control should be used at the same concentration as the antibody of interest.
3. Warning: Some APC-Cy7 and PE-Cy7 conjugates show changes in their emission spectrum with prolonged exposure to formaldehyde. If you are unable to analyze fixed samples within four hours, we recommend that you use BD™ Stabilizing Fixative (Cat. No. 338036).
4. Cy is a trademark of Amersham Biosciences Limited. This conjugated product is sold under license to the following patents: US Patent Nos. 5,486,616; 5,569,587; 5,569,766; 5,627,027.
5. This product is subject to proprietary rights of Amersham Biosciences Corp. and Carnegie Mellon University and made and sold under license from Amersham Biosciences Corp. This product is licensed for sale only for research. It is not licensed for any other use. If you require a commercial license to use this product and do not have one return this material, unopened to BD Biosciences, 10975 Torreyana Rd, San Diego, CA 92121 and any money paid for the material will be refunded.
6. PE-Cy7 is a tandem fluorochrome composed of R-phycoerythrin (PE), which is excited by 488-nm light and serves as an energy donor, coupled to the cyanine dye Cy7, which acts as an energy acceptor and fluoresces maximally at 780 nm. PE-Cy7 tandem fluorochrome emission is collected in a detector for fluorescence wavelengths of 750 nm and higher. Although every effort is made to minimize the lot-to-lot variation in the efficiency of the fluorochrome energy transfer, differences in the residual emission from PE may be observed. Therefore, we recommend that individual compensation controls be performed for every PE-Cy7 conjugate. PE-Cy7 is optimized for use with a single argon ion laser emitting 488-nm light, and there is no significant overlap between PE-Cy7 and FITC emission spectra. When using dual-laser cytometers, which may directly excite both PE and Cy7, we recommend the use of cross-beam compensation during data acquisition or software compensation during data analysis.
7. Source of all serum proteins is from USDA inspected abattoirs located in the United States.
8. Caution: Sodium azide yields highly toxic hydrazoic acid under acidic conditions. Dilute azide compounds in running water before discarding to avoid accumulation of potentially explosive deposits in plumbing.
9. Please observe the following precautions: Absorption of visible light can significantly alter the energy transfer occurring in any tandem fluorochrome conjugate; therefore, we recommend that special precautions be taken (such as wrapping vials, tubes, or racks in aluminum foil) to prevent exposure of conjugated reagents, including cells stained with those reagents, to room illumination.
10. For fluorochrome spectra and suitable instrument settings, please refer to our Fluorochrome Web Page at www.bdbiosciences.com/colors.
11. Please refer to www.bdbiosciences.com/pharming/en/protocols for technical protocols.

References

Azuma M, Yssel H, Phillips JH, Spits H, Lanier LL. Functional expression of B7/BB1 on activated T lymphocytes. *J Exp Med.* 1993; 177(3):845-850. (Biology)

Behrens L, Kerschensteiner M, Misgeld T, Goebels N, Wekerle H, Hohlfeld R. Human muscle cells express a functional costimulatory molecule distinct from B7.1 (CD80) and B7.2 (CD86) in vitro and in inflammatory lesions. *J Immunol.* 1998; 161(11):5943-5951. (Biology)

Freeman GJ, Cardoso AA, Boussiotis VA, et al. The BB1 monoclonal antibody recognizes both cell surface CD74 (MHC class II-associated invariant chain) as well as B7-1 (CD80), resolving the question regarding a third CD28/CTLA-4 counterreceptor. *J Immunol.* 1998; 161(6):2708-2715. (Biology)

Koulova L, Clark EA, Shu G, Dupont B. The CD28 ligand B7/BB1 provides costimulatory signal for alloactivation of CD4+ T cells. *J Exp Med.* 1991; 173(3):759-762. (Biology)

Schlossman SF, Boumsell L, Gilks W, et al, ed. *Leukocyte Typing V: White Cell Differentiation Antigens*. New York: Oxford University Press; 1995. (Clone-specific: Flow cytometry)

Schwartz RH. Costimulation of T lymphocytes: the role of CD28, CTLA-4, and B7/BB1 in interleukin-2 production and immunotherapy. *Cell.* 1992; 71(7):1065-1068. (Biology)