

## Technical Data Sheet

## PE Mouse Anti-Human CD11c

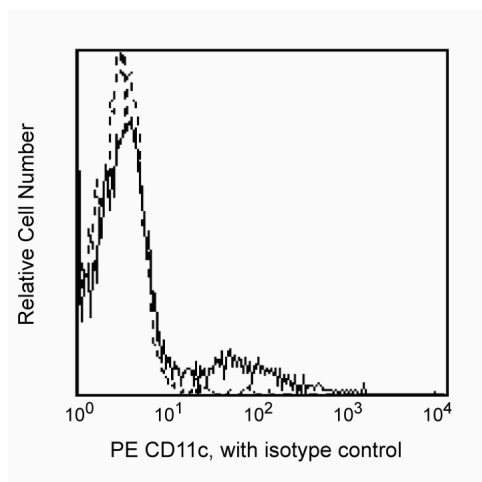
## Product Information

|                         |  |
|-------------------------|--|
| <b>Material Number:</b> | <b>560999</b>  |
| <b>Alternate Name:</b>  | ITGAX; AlphaX integrin chain; Axb2; Integrin alpha-X; CR4; Leu M5; SLEB6 |
| <b>Size:</b>            | 25 tests   |
| <b>Vol. per Test:</b>   | 20 µl  |
| <b>Clone:</b>           | B-ly6  |
| <b>Isotype:</b>         | Mouse IgG1, κ  |
| <b>Reactivity:</b>      | QC Testing: Human  |
| <b>Workshop:</b>        | IV N012  |
| <b>Storage Buffer:</b>  | Aqueous buffered solution containing BSA and ≤0.09% sodium azide.        |

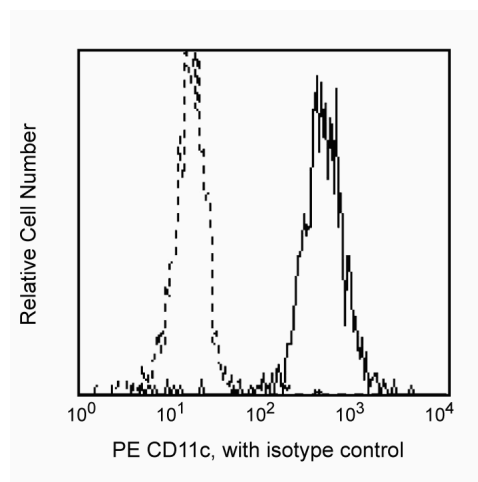
## Description

The B-ly6 monoclonal antibody specifically binds to the 150 kDa adhesion glycoprotein CD11c (p150, integrin α chain). CD11c is expressed on dendritic cells, monocytes, macrophages, granulocytes, NK cells and subsets of B and T cells. It associates with CD18 to form the CD11c/CD18 complex that binds fibrinogen and has been reported to be a receptor for iC3b and ICAM-1. Reports indicate that CD11c/CD18 plays a role as an adhesion molecule that mediates cellular binding to ligands expressed on stimulated epithelium and endothelium.

This antibody is routinely tested by flow cytometric analysis. Other applications were tested at BD Biosciences Pharmingen during antibody development only or reported in the literature.



Profile of peripheral blood lymphocytes analyzed on a FACScan (BDIS, San Jose, CA)



## Preparation and Storage

The monoclonal antibody was purified from tissue culture supernatant or ascites by affinity chromatography.

The antibody was conjugated with R-PE under optimum conditions, and unconjugated antibody and free PE were removed.

Store undiluted at 4°C and protected from prolonged exposure to light. Do not freeze.

## Application Notes

## Application

|                |                  |
|----------------|------------------|
| Flow cytometry | Routinely Tested |
|----------------|------------------|

## Suggested Companion Products

| Catalog Number | Name                             | Size      | Clone   |
|----------------|----------------------------------|-----------|---------|
| 555749         | PE Mouse IgG1, κ Isotype Control | 100 tests | MOPC-21 |

## BD Biosciences

bdbiosciences.com

| United States | Canada       | Europe        | Japan        | Asia Pacific | Latin America/Caribbean |
|---------------|--------------|---------------|--------------|--------------|-------------------------|
| 877.232.8995  | 888.268.5430 | 32.53.720.550 | 0120.8555.90 | 65.6861.0633 | 0800.771.7157           |

For country-specific contact information, visit [bdbiosciences.com/how\\_to\\_order/](http://bdbiosciences.com/how_to_order/)

Conditions: The information disclosed herein is not to be construed as a recommendation to use the above product in violation of any patents. BD Biosciences will not be held responsible for patent infringement or other violations that may occur with the use of our products. Purchase does not include or carry any right to resell or transfer this product either as a stand-alone product or as a component of another product. Any use of this product other than the permitted use without the express written authorization of Becton Dickinson and Company is strictly prohibited.

For Research Use Only. Not for use in diagnostic or therapeutic procedures. Not for resale.

BD, BD Logo and all other trademarks are the property of Becton, Dickinson and Company. ©2011 BD



## Product Notices

1. This reagent has been pre-diluted for use at the recommended Volume per Test. We typically use  $1 \times 10^6$  cells in a 100- $\mu$ l experimental sample (a test).
2. Since applications vary, each investigator should titrate the reagent to obtain optimal results.
3. Please refer to [www.bdbiosciences.com/pharmingen/protocols](http://www.bdbiosciences.com/pharmingen/protocols) for technical protocols.
4. For fluorochrome spectra and suitable instrument settings, please refer to our Fluorochrome Web Page at [www.bdbiosciences.com/colors](http://www.bdbiosciences.com/colors).
5. Caution: Sodium azide yields highly toxic hydrazoic acid under acidic conditions. Dilute azide compounds in running water before discarding to avoid accumulation of potentially explosive deposits in plumbing.
6. Source of all serum proteins is from USDA inspected abattoirs located in the United States.

## References

Barclay NA, Brown MH, Birkeland ML, et al, ed. *The Leukocyte Antigen FactsBook*. San Diego, CA: Academic Press; 1997. (Biology)

Knapp W, Dorken B, Rieber EP, et al, ed. *Leucocyte Typing IV*. New York: Oxford University Press; 1989:1-1208. (Biology)

Stacker SA, Springer TA. Leukocyte integrin P150,95 (CD11c/CD18) functions as an adhesion molecule binding to a counter-receptor on stimulated endothelium. *J Immunol*. 1991; 146(2):648-655. (Biology)

van Vugt MJ, van den Herik-Oudijk IE, van de Winkle JG. Binding of PE-CY5 conjugates to the human high-affinity receptor for IgG (CD64). *Blood*. 1996; 88(6):2358-2361. (Biology)