

## Technical Data Sheet

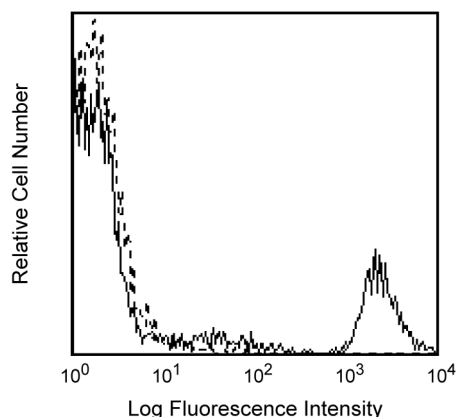
## PE Mouse Anti-Human CD20

## Product Information

<b>Material Number:</b>	560961
<b>Size:</b>	25 tests
<b>Vol. per Test:</b>	20 µl
<b>Clone:</b>	2H7
<b>Isotype:</b>	Mouse (BALB/c) IgG2b, κ
<b>Reactivity:</b>	QC Testing: Human
<b>Workshop:</b>	IV B201
<b>Storage Buffer:</b>	Aqueous buffered solution containing BSA and ≤0.09% sodium azide.

## Description

The 2H7 monoclonal antibody specifically binds to CD20 that is encoded by the *MS4A1* (*Membrane-spanning 4-domains, subfamily A, member 1*) gene. CD20 is a 33-37 kDa unglycosylated four-transmembrane phosphoprotein. CD20 is expressed on pre-B-cells, resting and activated B cells and follicular dendritic cells but not on plasma cells. Low level CD20 expression is observed on a small subset of normal circulating T lymphocytes. The CD20 molecule is involved in the regulation of B-cell activation.



Profile of peripheral blood lymphocytes analyzed on a FACScan (BDIS, San Jose, CA)

## Preparation and Storage

Store undiluted at 4°C and protected from prolonged exposure to light. Do not freeze.

The monoclonal antibody was purified from tissue culture supernatant or ascites by affinity chromatography.

The antibody was conjugated with R-PE under optimum conditions, and unconjugated antibody and free PE were removed.

## Application Notes

## Application

Flow cytometry	Routinely Tested
----------------	------------------

## Suggested Companion Products

Catalog Number	Name	Size	Clone
555743	PE Mouse IgG2b κ Isotype Control	100 tests	27-35

## Product Notices

1. This reagent has been pre-diluted for use at the recommended Volume per Test. We typically use  $1 \times 10^6$  cells in a 100-µl experimental sample (a test).
2. Source of all serum proteins is from USDA inspected abattoirs located in the United States.
3. Caution: Sodium azide yields highly toxic hydrazoic acid under acidic conditions. Dilute azide compounds in running water before discarding to avoid accumulation of potentially explosive deposits in plumbing.

## BD Biosciences

bdbiosciences.com

United States	Canada	Europe	Japan	Asia Pacific	Latin America/Caribbean
877.232.8995	888.268.5430	32.53.720.550	0120.8555.90	65.6861.0633	0800.771.7157

For country-specific contact information, visit [bdbiosciences.com/how\\_to\\_order/](http://bdbiosciences.com/how_to_order/)

Conditions: The information disclosed herein is not to be construed as a recommendation to use the above product in violation of any patents. BD Biosciences will not be held responsible for patent infringement or other violations that may occur with the use of our products. Purchase does not include or carry any right to resell or transfer this product either as a stand-alone product or as a component of another product. Any use of this product other than the permitted use without the express written authorization of Becton Dickinson and Company is strictly prohibited.

For Research Use Only. Not for use in diagnostic or therapeutic procedures. Not for resale.

BD, BD Logo and all other trademarks are the property of Becton, Dickinson and Company. ©2011 BD



4. Please refer to [www.bdbiosciences.com/pharmingen/protocols](http://www.bdbiosciences.com/pharmingen/protocols) for technical protocols.

## References

Hultin LE, Hausner MA, Hultin PM, Giorgi JV. CD20 (pan-B cell) antigen is expressed at a low level on a subpopulation of human T lymphocytes. *Cytometry*. 1993; 14(2):193-204. (Biology)

Knapp W, Dorken B, Rieber EP, et al, ed. *Leucocyte Typing IV*. New York: Oxford University Press; 1989:1-1208. (Biology)