

Technical Data Sheet

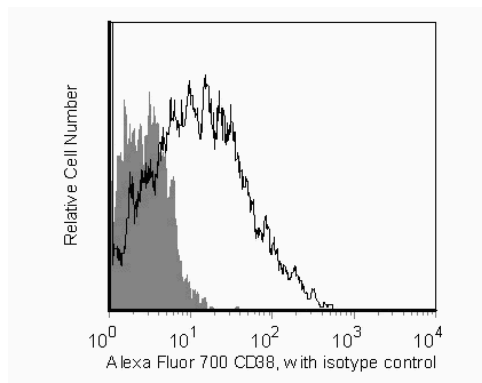
Alexa Fluor® 700 Mouse Anti-Human CD38

Product Information

Material Number:	560676
Size:	50 tests
Vol. per Test:	5 µl
Clone:	HIT2
Isotype:	Mouse IgG1, κ
Reactivity:	QC Testing: Human
Workshop:	III 155
Storage Buffer:	Aqueous buffered solution containing protein stabilizer and ≤0.09% sodium azide.

Description

The HIT2 monoclonal antibody specifically binds to CD38. CD38 is a 45 kDa type II single-chain transmembrane glycoprotein present on thymocytes, activated T cells and terminally differentiated B cells (plasma cells). Other reactive cells include monocytes, macrophages, dendritic cells and some epithelial cells. The CD38 antigen acts as an ectoenzyme that catalyzes the synthesis and hydrolysis of a Ca⁺⁺ mobilizing agent, cyclic ADP-ribose. This intracellular calcium plays an important role in cell signalling pathways. Reports describe CD38 as participating in adhesion with CD31, immunoregulatory functions involving signal transduction leading to cell growth, apoptosis, and differentiation.



Flow cytometric analysis of CD38 on human lysed whole blood. Human lysed whole blood was stained with the Alexa Fluor® 700 Mouse Anti-Human CD38 antibody (unshaded) or with a Alexa Fluor® 700 Mouse IgG1, κ isotype control (shaded). Histograms were derived from gated events based on light scattering characteristics for lymphocytes. Flow cytometry was performed on a BD™ LSR II flow cytometry system.

Preparation and Storage

Store undiluted at 4°C and protected from prolonged exposure to light. Do not freeze.

The monoclonal antibody was purified from tissue culture supernatant or ascites by affinity chromatography.

The antibody was conjugated to Alexa Fluor® 700 under optimum conditions, and unreacted Alexa Fluor® 700 was removed.

Application Notes

Application

Flow cytometry	Routinely Tested
----------------	------------------

Suggested Companion Products

Catalog Number	Name	Size	Clone
557882	Alexa Fluor® 700 Mouse IgG1, κ Isotype Control	0.1 mg	MOPC-21
555899	Lysing Buffer	100 ml	(none)

Product Notices

1. This reagent has been pre-diluted for use at the recommended Volume per Test. We typically use 1×10^6 cells in a 100-µl experimental sample (a test).
2. An isotype control should be used at the same concentration as the antibody of interest.
3. Alexa Fluor® 700 has an adsorption maximum of ~700nm and a peak fluorescence emission of ~720nm. Before staining cells with this reagent, please confirm that your flow cytometer is capable of exciting the fluorochrome and discriminating the resulting fluorescence.

BD Biosciences

bdbiosciences.com

United States 877.232.8995 Canada 888.268.5430 Europe 32.53.720.550 Japan 0120.8555.90 Asia Pacific 65.6861.0633 Latin America/Caribbean 0800.771.7157

For country-specific contact information, visit bdbiosciences.com/how_to_order/

Conditions: The information disclosed herein is not to be construed as a recommendation to use the above product in violation of any patents. BD Biosciences will not be held responsible for patent infringement or other violations that may occur with the use of our products. Purchase does not include or carry any right to resell or transfer this product either as a stand-alone product or as a component of another product. Any use of this product other than the permitted use without the express written authorization of Becton Dickinson and Company is strictly prohibited.

For Research Use Only. Not for use in diagnostic or therapeutic procedures. Not for resale.

BD, BD Logo and all other trademarks are the property of Becton, Dickinson and Company. ©2011 BD



4. Alexa Fluor® is a registered trademark of Molecular Probes, Inc., Eugene, OR.
5. The Alexa Fluor®, Pacific Blue™, and Cascade Blue® dye antibody conjugates in this product are sold under license from Molecular Probes, Inc. for research use only, excluding use in combination with microarrays, or as analyte specific reagents. The Alexa Fluor® dyes (except for Alexa Fluor® 430), Pacific Blue™ dye, and Cascade Blue® dye are covered by pending and issued patents.
6. Caution: Sodium azide yields highly toxic hydrazoic acid under acidic conditions. Dilute azide compounds in running water before discarding to avoid accumulation of potentially explosive deposits in plumbing.
7. For fluorochrome spectra and suitable instrument settings, please refer to our Fluorochrome Web Page at www.bdbiosciences.com/colors.
8. Please refer to www.bdbiosciences.com/pharming/protocols for technical protocols.

References

- McMichael AJ, Beverly PCL, Gilks W, et al, ed. *Leukocyte Typing III: White Cell Differentiation Antigens*. New York: Oxford University Press; 1987. (Biology)
- Schlossman SF, Boumsell L, Gilks W, et al, ed. *Leukocyte Typing V: White Cell Differentiation Antigens*. New York: Oxford University Press; 1995. (Biology)