

Technical Data Sheet

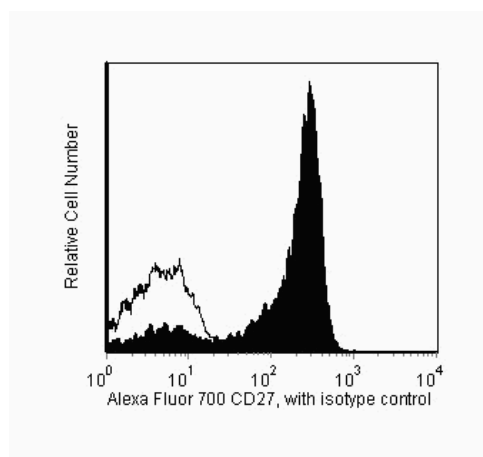
Alexa Fluor® 700 Mouse Anti-Human CD27

Product Information

Material Number:	560611
Size:	50 tests
Vol. per Test:	5 µl
Clone:	M-T271
Isotype:	Mouse IgG1, κ
Reactivity:	QC Testing: Human
Workshop:	V 5T CD27.03
Storage Buffer:	Aqueous buffered solution containing protein stabilizer and ≤0.09% sodium azide.

Description

Reacts with a disulphide-linked 110 kDa dimer of two polypeptide chains. CD27 molecule is a lymphocyte-specific member of the TNF/NGF-R family, and is expressed on the subset of human thymocytes and on the majority of mature T lymphocytes. CD27 is highly induced on T cells after TCR stimulation. CD27 may be involved in cellular interaction of T and B lymphocytes.



Flow cytometric analysis of CD27 on human lysed whole blood. Human lysed whole blood was stained with the Alexa Fluor® 700 Mouse Anti-Human CD27 antibody (shaded) or with a Alexa Fluor® 700 Mouse IgG1,κ isotype control (unshaded). Histograms were derived from gated events based on light scattering characteristics for lymphocytes. Flow cytometry was performed on a BD™ LSR II flow cytometry system.

Preparation and Storage

Store undiluted at 4°C and protected from prolonged exposure to light. Do not freeze.

The monoclonal antibody was purified from tissue culture supernatant or ascites by affinity chromatography.

The antibody was conjugated to Alexa Fluor® 700 under optimum conditions, and unreacted Alexa Fluor® 700 was removed.

Application Notes

Application

Flow cytometry	Routinely Tested
----------------	------------------

Suggested Companion Products

Catalog Number	Name	Size	Clone
557882	Alexa Fluor® 700 Mouse IgG1, κ Isotype Control	0.1 mg	MOPC-21
555899	Lysing Buffer	100 ml	(none)

Product Notices

1. This reagent has been pre-diluted for use at the recommended Volume per Test. We typically use 1×10^6 cells in a 100-µl experimental sample (a test).
2. An isotype control should be used at the same concentration as the antibody of interest.
3. Alexa Fluor® 700 has an adsorption maximum of ~700nm and a peak fluorescence emission of ~720nm. Before staining cells with this reagent, please confirm that your flow cytometer is capable of exciting the fluorochrome and discriminating the resulting fluorescence.
4. Alexa Fluor® is a registered trademark of Molecular Probes, Inc., Eugene, OR.

BD Biosciences

bdbiosciences.com

United States	Canada	Europe	Japan	Asia Pacific	Latin America/Caribbean
877.232.8995	888.259.0187	32.53.720.550	0120.8555.90	65.6861.0633	55.11.5185.9995

For country-specific contact information, visit bdbiosciences.com/how_to_order/

Conditions: The information disclosed herein is not to be construed as a recommendation to use the above product in violation of any patents. BD Biosciences will not be held responsible for patent infringement or other violations that may occur with the use of our products. Purchase does not include or carry any right to resell or transfer this product either as a stand-alone product or as a component of another product. Any use of this product other than the permitted use without the express written authorization of Becton Dickinson and Company is strictly prohibited.

For Research Use Only. Not for use in diagnostic or therapeutic procedures. Not for resale.

BD, BD Logo and all other trademarks are the property of Becton, Dickinson and Company. ©2008 BD



5. The Alexa Fluor®, Pacific Blue™, and Cascade Blue® dye antibody conjugates in this product are sold under license from Molecular Probes, Inc. for research use only, excluding use in combination with microarrays, or as analyte specific reagents. The Alexa Fluor® dyes (except for Alexa Fluor® 430), Pacific Blue™ dye, and Cascade Blue® dye are covered by pending and issued patents.
6. Caution: Sodium azide yields highly toxic hydrazoic acid under acidic conditions. Dilute azide compounds in running water before discarding to avoid accumulation of potentially explosive deposits in plumbing.
7. For fluorochrome spectra and suitable instrument settings, please refer to our Fluorochrome Web Page at www.bdbiosciences.com/colors.
8. Please refer to www.bdbiosciences.com/pharmingen/protocols for technical protocols.

References

Bigler RD, Bushkin Y, Chiorazzi N. S152 (CD27). A modulating disulfide-linked T cell activation antigen. *J Immunol.* 1988; 141(1):21-28. (Biology)

Bigler RD, Donat TL, Boselli CM. Definition of three epitopes of the CD27 molecule [P 120->55] present on activated normal lymphocytes. In: Knapp W, Dorken B, Rieber EP, et al, ed. *Leukocyte Typing IV: White Cell Differentiation Antigens*. New York: Oxford University Press; 1989:351-352. (Biology)

Schlossman S, Boumell L, et al, ed. *Leucocyte Typing V*. New York: Oxford University Press; 1995. (Biology)