



## E-Gel<sup>®</sup> Low Range Quantitative DNA Ladder

Cat. No. 12373-031

Conc. 175 ng/10  $\mu$ l

### Introduction

The E-Gel<sup>®</sup> Low Range Quantitative DNA Ladder is designed for use as a molecular weight standard and for estimating the amount of DNA.

The important features of the ladder are listed below:

- Consists of five linear double-strand DNA fragments (100-2000 bp)
- Suitable for estimating molecular weight and quantity of DNA fragments in agarose gel electrophoresis
- Provided in a ready-to-use format
- Visualized by ethidium bromide staining

### Specifications

Contents: 1 ml of E-Gel<sup>®</sup> Low Range Quantitative DNA Ladder.  
Sufficient ladder is provided for 100 applications.

Storage Buffer: 8 mM Tris-HCl, pH 7.5; 1 mM EDTA; 5% glycerol;  
and 0.005% Orange G.

Storage: Store at room temperature or 4°C.

### Directions for Use

The E-Gel<sup>®</sup> Low Range Quantitative DNA Ladder is provided in a ready-to-use format. There is no need to heat the ladder prior to loading. Use loading volumes listed below to obtain the best results:

Gel	Ladder	Water	Total Volume
Standard agarose	10 $\mu$ l	--	10 $\mu$ l
E-Gel <sup>®</sup> 96	10 $\mu$ l	10 $\mu$ l	20 $\mu$ l
E-Gel <sup>®</sup> double comb			
Marker lane	5 $\mu$ l	5 $\mu$ l	10 $\mu$ l
Sample lane	10 $\mu$ l	10 $\mu$ l	20 $\mu$ l
E-Gel <sup>®</sup> single comb	10 $\mu$ l	10 $\mu$ l	20 $\mu$ l

Part No. 12373031.PPS

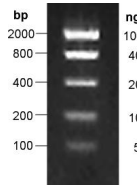
Doc. Rev. 081602

This product is distributed for laboratory research only. CAUTION: Not for diagnostic use. The safety and efficacy of this product in diagnostic or other clinical uses has not been established.

For technical questions about this product, call the Invitrogen Tech-Line<sup>™</sup> U.S.A. 800 955 6288

### Example

10  $\mu$ l of E-Gel<sup>®</sup> Low Range Quantitative DNA Ladder was diluted with 10  $\mu$ l of water and loaded onto a 2% E-Gel<sup>®</sup> double comb gel (see figure below). Electrophoresis of 10  $\mu$ l of the ladder results in bands containing 100, 40, 20, 10, and 5 ng of DNA, respectively.



### Product Qualification

Agarose gel analysis must clearly show all bands (2000, 800, 400, 200, and 100 bp). Sharpness, relative intensity, and absence of background are evaluated relative to a control lot by agarose gel analysis.

#### Limited Use Label License No. 40: DNA Mass Ladder

This product is the subject of U.S. Patent No. 5,834,201 owned by Invitrogen Corporation. The purchase of this product conveys to the buyer the non-transferable right to use the purchased amount of the product and components of the product in research conducted by the buyer (whether the buyer is an academic or for-profit entity). The buyer cannot sell or otherwise transfer (a) this product (b) its components or (c) materials made using this product or its components to a third party or otherwise use this product or its components or materials made using this product or its components for commercial purposes. The buyer may transfer information or materials made through the use of this product to a scientific collaborator, provided that such transfer is not for the commercial purposes of the buyer, and that such collaborator agrees in writing (a) to not transfer such materials to any third party, and (b) to use such transferred materials and/or information solely for research and not for commercial purposes. Commercial purposes means any activity by a party for consideration and may include, but is not limited to: (1) use of the product or its components in manufacturing; (2) use of the product or its components to provide a service, information, or data; (3) use of the product or its components for therapeutic, diagnostic or prophylactic purposes; or (4) resale of the product or its components, whether or not such product or its components are resold for use in research. Invitrogen Corporation will not assert a claim against the buyer of infringement of the above patent based upon the manufacture, use or sale of a therapeutic, clinical diagnostic, vaccine or prophylactic product developed in research by the buyer in which this product or its components was employed, provided that neither this product nor any of its components was used in the manufacture of such product. If the purchaser is not willing to accept the limitations of this limited use statement, Invitrogen is willing to accept return of the products with a full refund. For information on purchasing a license to this product for purposes other than research, contact Licensing Department, Invitrogen Corporation, 1600 Faraday Avenue, Carlsbad, California 92008. Phone (760) 603-7200. Fax (760) 602-6500.

©2002 Invitrogen Corporation. All rights reserved.