

Technical Data Sheet

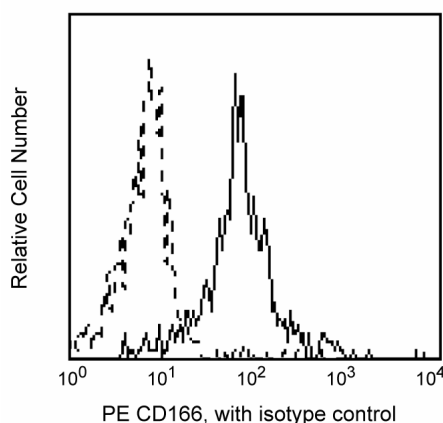
PE Mouse Anti-Human CD166

Product Information

Material Number:	559263
Size:	100 tests
Vol. per Test:	20 µl
Clone:	3A6
Isotype:	Mouse IgG1, κ
Reactivity:	QC Testing: Human
Workshop:	VI A109
Storage Buffer:	Aqueous buffered solution containing BSA and ≤0.09% sodium azide.

Description

Reacts with the activated leukocyte cell adhesion molecule (ALCAM), a 100-105 kDa transmembrane glycoprotein, also known as the CD6 ligand, CD166. It is composed of an immunoglobulin-like extracellular domain, a transmembrane region and a short cytoplasmic tail. ALCAM belongs to the Ig superfamily of proteins and is expressed on neurons, activated T cells, activated monocytes, epithelial cells and fibroblasts. CD166 plays an important role in mediating adhesion interactions between thymic epithelial cells and CD6+ cells during intrathymic T-cell development.



Profile of peripheral blood monocytes analyzed by flow cytometry.

Preparation and Storage

The monoclonal antibody was purified from tissue culture supernatant or ascites by affinity chromatography.

The antibody was conjugated with R-PE under optimum conditions, and unconjugated antibody and free PE were removed.

Store undiluted at 4°C and protected from prolonged exposure to light. Do not freeze.

Application Notes

Application

Flow cytometry

Routinely Tested

Suggested Companion Products

Catalog Number	Name	Size	Clone
555749	PE Mouse IgG1, κ Isotype Control	100 tests	MOPC-21

Product Notices

1. This reagent has been pre-diluted for use at the recommended Volume per Test. We typically use 1×10^6 cells in a 100-µl experimental sample (a test).
2. Since applications vary, each investigator should titrate the reagent to obtain optimal results.
3. Please refer to www.bdbiosciences.com/pharmingen/protocols for technical protocols.
4. For fluorochrome spectra and suitable instrument settings, please refer to our Fluorochrome Web Page at www.bdbiosciences.com/colors.
5. Caution: Sodium azide yields highly toxic hydrazoic acid under acidic conditions. Dilute azide compounds in running water before discarding to avoid accumulation of potentially explosive deposits in plumbing.

BD Biosciences

bdbiosciences.com

United States	Canada	Europe	Japan	Asia Pacific	Latin America/Caribbean
877.232.8995	888.268.5430	32.53.720.550	0120.8555.90	65.6861.0633	0800.771.7157

For country-specific contact information, visit bdbiosciences.com/how_to_order/

Conditions: The information disclosed herein is not to be construed as a recommendation to use the above product in violation of any patents. BD Biosciences will not be held responsible for patent infringement or other violations that may occur with the use of our products. Purchase does not include or carry any right to resell or transfer this product either as a stand-alone product or as a component of another product. Any use of this product other than the permitted use without the express written authorization of Becton Dickinson and Company is strictly prohibited.

For Research Use Only. Not for use in diagnostic or therapeutic procedures. Not for resale.

BD, BD Logo and all other trademarks are the property of Becton, Dickinson and Company. ©2011 BD



6. Source of all serum proteins is from USDA inspected abattoirs located in the United States.

References

Aruffo A, Bowen MA, Patel DD, et al. CD6-ligand interactions: a paradigm for SRCR domain function?. *Immunol Today*. 1997; 18(10):498-504. (Biology)

Kishimoto T, von dem Borne AEG, Goyert SM, et al., ed. *Leucocyte Typing VI: White Cell Differentiation Antigens*. London: Garland Publishing; 1997. (Clone-specific)

Patel DD, Wee SF, Whichard LP, et al. Identification and characterization of a 100-kD ligand for CD6 on human thymic epithelial cells. *J Exp Med*. 1995; 181(4):1563-1568. (Biology)