

Technical Data Sheet

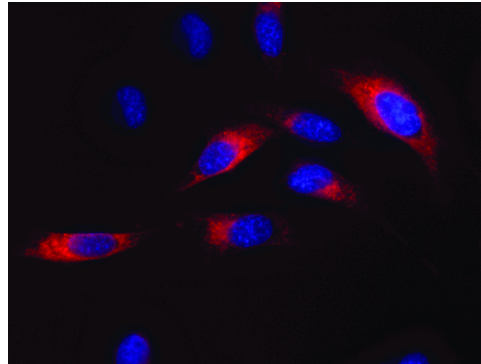
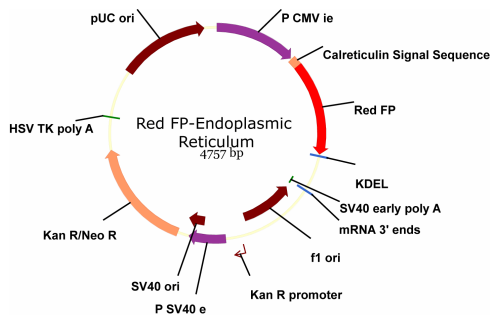
Red FP Vector - Endoplasmic Reticulum

Product Information

Material Number:	558725
Size:	20 µg
Concentration:	0.5 mg/ml
Storage Buffer:	Aqueous buffered solution containing no preservative.

Description

BD Pharmingen™ Red FP Vector - Endoplasmic Reticulum is a mammalian expression vector that encodes a fusion of the red fluorescent protein (FP) from *Discosoma sp.* with an endoplasmic reticulum (ER) targeting sequence fused to its 5'-end and an ER retention sequence, KDEL, fused to its 3'-end. In order to increase the translation efficiency in mammalian cells, a Kozak consensus translation initiation site has been introduced to the 5'-end of the red FP open reading frame, and its sequence has been optimized with human codons. The red FP fusion is expressed under the control of the immediate early promoter of cytomegalovirus (P CMV ie), and its sequence is followed by downstream simian virus 40 (SV40) polyadenylation signals. The vector contains a neomycin resistance gene controlled by the SV40 promoter (P SV40 e) that allows selection of stably transfected eukaryotic cells using G418. An additional bacterial (Kan R) promoter drives the expression of the same gene encoding for kanamycin resistance in *E. coli*.



LEFT: Map of BD Pharmingen™ Red FP Vector - Endoplasmic Reticulum. The sequence of the entire coding region of the fluorescent protein fusion was verified by DNA sequencing, and the vector sequence can be found on our Bioimaging Certified Reagents web page, http://www.bdbiosciences.com/features/products/display_product.php?keyID=389.

RIGHT: Representative merged 40x confocal image of HeLa cells stably expressing BD Pharmingen™ Red FP Vector - Endoplasmic Reticulum. The cells were transfected and the stable population was selected according to the Recommended Assay Procedure. The transfected cells were seeded at 10,000 cells per well in a 96-well imaging plate (Cat. No. 353219), cultured overnight, washed with Hanks' Balanced Salt Solution (HBSS), and incubated in HBSS with 2 µg/ml Hoechst 33342. The cells were imaged on a BD Pathway™ 855 Bioimager System. The Red FP Vector - Endoplasmic Reticulum signal is pseudo-colored red, and Hoechst 33342 is pseudo-colored blue.

Preparation and Storage

Propagation in *E. coli*:

- *E. coli* replication origin: pUC19
- Copy number: ~500
- Selectable marker: kanamycin (50 mg/ml).
- f1 origin for single-stranded DNA production
- Suitable host strains: DH5a, HB101, and other general purpose strains. Single-stranded DNA production requires a host such as JM109 or XL1-Blue that contains an F plasmid.
- Plasmid incompatibility group: pMB1/ColE1

Quality Control: For verification, the vector/insert region of each vector lot is checked by DNA sequencing, and diagnostic restriction enzyme tests are performed. In addition, each lot must have a 260/280 absorbance ratio >1.7, >90% supercoiled DNA, and endotoxin level <0.1 EU/µg.

Store undiluted at -20°C.

BD Biosciences

bdbiosciences.com

United States	Canada	Europe	Japan	Asia Pacific	Latin America/Caribbean
877.232.8995	888.268.5430	32.53.720.550	0120.8555.90	65.6861.0633	0800.771.7157

For country-specific contact information, visit bdbiosciences.com/how_to_order/

Conditions: The information disclosed herein is not to be construed as a recommendation to use the above product in violation of any patents. BD Biosciences will not be held responsible for patent infringement or other violations that may occur with the use of our products. Purchase does not include or carry any right to resell or transfer this product either as a stand-alone product or as a component of another product. Any use of this product other than the permitted use without the express written authorization of Becton Dickinson and Company is strictly prohibited.

For Research Use Only. Not for use in diagnostic or therapeutic procedures. Not for resale.

BD, BD Logo and all other trademarks are the property of Becton, Dickinson and Company. ©2011 BD



Application Notes

Application

Flow cytometry	Tested During Development
Bioimaging	Tested During Development

Recommended Assay Procedure:

Transfection methods should be optimized for individual cell lines and well formats.

Transient transfection

1. Seed ~300,000 cells per well of 6-well plates on glass coverslips and culture overnight.
2. The next day transfect cells with 1 µg plasmid DNA per well using FuGENE® 6 Transfection Reagent (Roche Applied Science) according to the manufacturer's directions.
3. Cells can generally be used in experiments 24 - 48 hours post-transfection.

Stable transfection

1. Seed ~300,000 cells per well in a 6-well plate and culture overnight.
2. The next day, transfect cells with 1 µg plasmid DNA per well using FuGENE® 6 Transfection Reagent (Roche Applied Science) according to the manufacturer's directions.
3. After 48 hours, replace medium with medium supplemented with 0.5 mg/ml G418.
4. Continue selection for approximately two weeks until colonies can be identified and isolated.

Note: Stable populations can be sorted or single-cell cloned by flow cytometry.

Detection

BD Pharmingen™ Red FP Vector - Endoplasmic Reticulum can be used for the localized expression of red FP in the ER of mammalian cells. It allows the visualization of the ER in living and fixed cells using fluorescence microscopy using Rhodamine or other equivalent filter sets. Red FP has an excitation maximum at 563 nm and emission maximum at 582 nm. Recommended filters for the BD Pathway™ instruments are:

<i>Instrument</i>	<i>Excitation</i>	<i>Emission</i>	<i>Dichroic</i>
<i>BD Pathway 855</i>	548/20	570LP	Fura/TRITC
<i>BD Pathway 435</i>	543/22	593/40	FF562

Red FP-expressing cells may be detected by flow cytometry using 488-nm excitation and the PE detector with a 585/42 nm bandpass filter. Please refer to the instrument Users Guide for more information.

Suggested Companion Products

<u>Catalog Number</u>	<u>Name</u>	<u>Size</u>	<u>Clone</u>
353219	BD Falcon™ 96-well Imaging Plate	NA	(none)

Product Notices

1. FuGENE, FuGENE-6, and FuGENE-HD are trademarks owned by Fugent LLC, and are protected by state, federal, and/or international trademark laws.
2. The product contained herein is covered under US patents 5,874,304, 5,786,464, and 5,795,737.

References

Fliegel L, Burns K, MacLennan DH, Reithmeier RA, Michalak M. Molecular cloning of the high affinity calcium-binding protein (calreticulin) of skeletal muscle sarcoplasmic reticulum. *J Biol Chem.* 1989; 264(36):21522-25128. (Biology)
Haas J, Park EC, Seed B. Codon usage limitation in the expression of HIV-1 envelope glycoprotein. *Curr Biol.* 1996; 6(3):315-324. (Methodology)
Kozak, M. An analysis of 5'-noncoding sequences from 699 vertebrate messenger RNAs. *Nucleic Acids Res.* 1987; 15(20):8125-8148. (Methodology)
Matz MV, Fradkov AF, Labas YA, et al. Fluorescent proteins from nonbioluminescent Anthozoa species. *Nat Biotechnol.* 1999; 17(10):969-973. (Methodology)
Munro S, Pelham HR. A C-terminal signal prevents secretion of luminal ER proteins. *Cell.* 1987; 48(5):899-907. (Biology)
Pelham HR. The dynamic organisation of the secretory pathway. *Cell Struct Funct.* 1996; 21(5):413-419. (Biology)

