

Technical Data Sheet

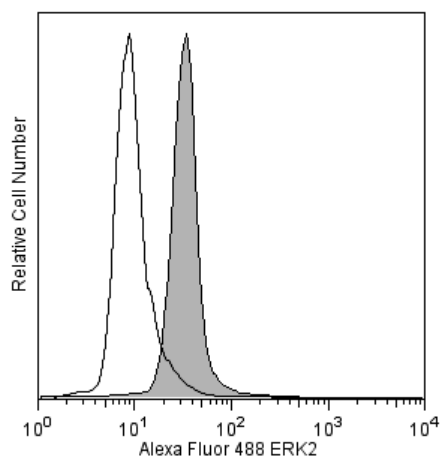
Alexa Fluor® 488 Mouse anti-ERK2

Product Information

Material Number:	558525
Size:	50 tests
Vol. per Test:	20 µl
Clone:	G263-7
Immunogen:	Human ERK2 Synthetic Peptide
Isotype:	Mouse IgG1, κ
Reactivity:	QC Testing: Human Reported: Mouse
Storage Buffer:	Aqueous buffered solution containing BSA and ≤0.09% sodium azide.

Description

The members of the *Mitogen-Activated Protein Kinase* (MAPK) family are components of a key signal transduction cascade that links events at the cell surface to responses in the nucleus. The signaling cascade is found in species as varied as yeast and humans, with many of the proteins being well conserved. In mammals the most widely studied members of the cascade are the *Extracellular signal-Regulated Kinases*, ERK1 (p44 MAPK) and ERK2 (p42 MAPK). ERK1 and ERK2 share 85% homology and are activated by extracellular signals such as growth factors, hormones, and phorbol esters. Activation occurs through a series of phosphorylations by kinases activating other kinases and eventually leading to phosphorylation of the ERKs. Growth factor stimulation leads to activation of Ras and Raf, leading to phosphorylation of MEK1 (MAPK/ERK kinase) which, in turn, activates the ERKs via dual phosphorylation. Once activated, the ERKs phosphorylate other cytoplasmic signaling molecules (protein kinases and phosphatases), cell-surface receptors, microtubule-associated proteins, and transcription factors in the nucleus. Thus, the active ERK has myriad downstream effectors that implicate it in the control of cell proliferation and differentiation, as well as regulation of the cytoskeleton. Furthermore, studies have shown that elevated ERK activity is associated with some cancers. The G263-7 recognizes ERK2. It does not cross-react with ERK1. Clone G263-7 was originally characterized in human (A431) and mouse (NIH/3T3) cells. A human ERK2 synthetic peptide was used as immunogen.



Analysis of ERK2 in human epithelioid carcinoma. HeLa S3 cells (ATCC CCL 2.2) were either transfected with ERK2 RNAi (open histogram) or untransfected (shaded histogram). The cells were fixed (BD Cytotfix™ buffer, Cat. No. 554655) for 10 minutes at 37 °C, then permeabilized (BD™ Phosflow Perm Buffer III, Cat. No. 558050) on ice for 30 minutes, and then stained with Alexa Fluor® 488 Mouse anti-ERK2. Down-regulation of ERK2 expression is evident in the RNAi-transfected cells. Flow cytometry was performed on a BD FACSCalibur™ flow cytometry system.

Preparation and Storage

Store undiluted at 4°C and protected from prolonged exposure to light. Do not freeze.

The monoclonal antibody was purified from tissue culture supernatant or ascites by affinity chromatography.

The antibody was conjugated to Alexa Fluor® 488 under optimum conditions, and unreacted Alexa Fluor® 488 was removed.

Application Notes

Application

Intracellular staining (flow cytometry)	Routinely Tested
---	------------------

Suggested Companion Products

Catalog Number	Name	Size	Clone
554655	Fixation Buffer	100 ml	(none)
558050	Perm Buffer III	125 ml	(none)

BD Biosciences

bdbiosciences.com

United States	Canada	Europe	Japan	Asia Pacific	Latin America/Caribbean
877.232.8995	888.259.0187	32.53.720.550	0120.8555.90	65.6861.0633	55.11.5185.9995

For country-specific contact information, visit bdbiosciences.com/how_to_order/

Conditions: The information disclosed herein is not to be construed as a recommendation to use the above product in violation of any patents. BD Biosciences will not be held responsible for patent infringement or other violations that may occur with the use of our products. Purchase does not include or carry any right to resell or transfer this product either as a stand-alone product or as a component of another product. Any use of this product other than the permitted use without the express written authorization of Becton Dickinson and Company is strictly prohibited.

For Research Use Only. Not for use in diagnostic or therapeutic procedures. Not for resale.

BD, BD Logo and all other trademarks are the property of Becton, Dickinson and Company. ©2008 BD



Product Notices

1. This reagent has been pre-diluted for use at the recommended Volume per Test. We typically use 1×10^6 cells in a 100- μ l experimental sample (a test).
2. Alexa Fluor® 488 fluorochrome emission is collected at the same instrument settings as for fluorescein isothiocyanate (FITC).
3. Alexa Fluor® is a registered trademark of Molecular Probes, Inc., Eugene, OR.
4. The Alexa Fluor®, Pacific Blue™, and Cascade Blue® dye antibody conjugates in this product are sold under license from Molecular Probes, Inc. for research use only, excluding use in combination with microarrays, or as analyte specific reagents. The Alexa Fluor® dyes (except for Alexa Fluor® 430), Pacific Blue™ dye, and Cascade Blue® dye are covered by pending and issued patents.
5. Source of all serum proteins is from USDA inspected abattoirs located in the United States.
6. Caution: Sodium azide yields highly toxic hydrazoic acid under acidic conditions. Dilute azide compounds in running water before discarding to avoid accumulation of potentially explosive deposits in plumbing.
7. For fluorochrome spectra and suitable instrument settings, please refer to our Fluorochrome Web Page at www.bdbiosciences.com/colors.
8. Please refer to www.bdbiosciences.com/pharming/protocols for technical protocols.

References

- Cobb MH, Boulton TG, Robbins DJ. Extracellular signal-regulated kinases: ERKs in progress. *Cell Regul.* 1991; 2:965-978. (Biology)
- Davis RJ. The mitogen-activated protein kinase signal transduction pathway. *J Biol Chem.* 1993; 268(20):14553-14556. (Biology)
- Fang JY, Richardson BC. The MAPK signalling pathways and colorectal cancer. *Lancet Oncol.* 2005; 6(5):322-327. (Biology)
- Kim SC, Hahn JS, Min YH, Yoo NC, Ko YW, Lee WJ. Constitutive activation of extracellular signal-regulated kinase in human acute leukemias: combined role of activation of MEK, hyperexpression of extracellular signal-regulated kinase, and downregulation of a phosphatase, PAC1. *Blood.* 1999; 93(11):3893-3899. (Biology)
- Reiser V, Ammerer G, Ruis H. Nucleocytoplasmic traffic of MAP kinases. *Gene Expr.* 1999; 7(4-6):247-254. (Biology)
- Sivaraman VS, Wang H, Nuovo GJ, Malbon CC. Hyperexpression of mitogen-activated protein kinase in human breast cancer. *J Clin Invest.* 1997; 99(7):1478-1483. (Biology)
- Stupack DG, Cho SY, Klemke RL. Molecular signaling mechanisms of cell migration and invasion. *Immunol Res.* 2000; 21(2-3):83-88. (Biology)
- Sweatt JD. The neuronal MAP kinase cascade: a biochemical signal integration system subserving synaptic plasticity and memory. *J Neurochem.* 2001; 76:1-10. (Biology)
- Treisman R. Regulation of transcription by MAP kinase cascades. *Curr Opin Cell Biol.* 1996; 8:205-215. (Biology)