

Technical Data Sheet

Human Naïve CD4⁺ T Cell Enrichment Set - DM**Product Information**

Catalog Number:

558521

Components:

51-9004697**Human Naïve CD4⁺ T Cell Enrichment Cocktail, 5.0 ml,**

comprising the following biotin-conjugated monoclonal antibodies:

Biotin Mouse Anti-human CD8, clone SK1
 Biotin Mouse Anti-human CD11b, clone ICRF44
 Biotin Mouse Anti-human CD16, clone 3G8
 Biotin Mouse Anti-human CD19, clone HIB19
 Biotin Mouse Anti-human CD36, clone CB38
 Biotin Mouse Anti-human CD41a, clone HIP8
 Biotin Mouse Anti-human CD45RO, clone UCHL1
 Biotin Mouse Anti-human CD56, clone B159
 Biotin Mouse Anti-human CD123, clone 9F5
 Biotin Mouse Anti-human $\gamma\delta$ -TCR, clone B1
 Biotin Mouse Anti-human Glycophorin A, clone GA-R2

in Aqueous buffered solution containing 0.09% Sodium Azide.

51-9003746**BD IMag™ Streptavidin Particles Plus - DM, 7.5 ml**

in Aqueous buffered solution containing BSA* and 0.09% Sodium Azide.

Description

The BD IMag™ Human Naïve CD4⁺ T Cell Enrichment Set – DM is used for the negative selection of untouched naïve CD4⁺ T cells from peripheral blood. The Human Naïve CD4⁺ T Cell Enrichment Cocktail contains biotinylated monoclonal antibodies that recognize antigens expressed on memory T cells, CD8⁺ T cells, B cells, NK cells, $\gamma\delta$ T cells, monocytes, DCs, granulocytes, platelets, and erythroid cells. The BD IMag™ Streptavidin Particles Plus – DM are magnetic nanoparticles that have streptavidin covalently conjugated to their surfaces. With these two components, the BD IMag™ Human Naïve CD4⁺ T Cell Enrichment Set - DM avoids the inadvertent activation of the enriched naïve helper T cells by using reagents that do not directly bind to those T cells. This Enrichment Set has been optimized for use with the BD IMagnet™, and it contains sufficient reagents to label 10⁹ peripheral blood mononuclear cells (PBMC).

Storage

Both the monoclonal antibody cocktail and the streptavidin-conjugated magnetic particles should be stored undiluted at 4°C.

Usage

The detailed Magnetic Labeling and Enrichment Protocol follows. In summary, the Human Naïve CD4⁺ T Cell Enrichment Cocktail simultaneously stains erythrocytes, platelets, and most leukocytes except the naïve CD4⁺ helper T cells. After washing away excess antibody, BD IMag™ Streptavidin Particles Plus – DM are added to the cell suspension and bind the cells bearing the biotinylated antibodies. The tube containing this labeled cell suspension is then placed within the magnetic field of the BD IMagnet™ (Cat. no. 552311). Negative selection is then performed to enrich for the unlabeled naïve CD4⁺ T Cells. Labeled cells migrate toward the magnet (positive fraction), leaving the unlabeled cells in suspension so they can be drawn off and retained (enriched fraction). The negative selection is repeated twice to increase the yield of the enriched fraction. If greater purity is required, negative selection may be performed on the enriched fraction. For clarification of the procedure, the magnetic separation steps are diagrammed in the Enrichment Flow Chart. The positive and enriched fractions can be evaluated in downstream applications such as flow cytometry and tissue culture. The biotinylated antibodies in the Human Naïve CD4⁺ T Cell Enrichment Cocktail have been optimized and pre-diluted to provide maximum efficiency for the enrichment of naïve CD4⁺ T cells from PBMC.

**Source of all serum proteins is from USDA inspected abattoirs located in the United States.*

Hazardous Ingredient: Sodium Azide. Avoid exposure to skin and eyes, ingestion, and contact with heat, acids, and metals. Wash exposed skin with soap and water. Flush eyes with water. Dilute with running water before discharge into plumbing.

BD IMag™ particles are prepared from carboxy-functionalized magnetic particles which are manufactured by Skold Technology.

Please see the next page.

Page 1 of 4

BD Biosciences Pharmingen

www.bdbiosciences.com

United States	Canada	Europe	Japan	Asia Pacific	Latin America/Caribbean
877.232.8995	888.259.0187	32.53.720.211	0120.8555.90	65.6861.0633	55.11.5185.9995

For country-specific contact information, visit www.bdbiosciences.com/how_to_order/

Conditions: The information disclosed herein is not to be construed as a recommendation to use the above product in violation of any patents. BD Biosciences will not be held responsible for patent infringement or other violations that may occur with the use of our products. Purchase does not include or carry any right to resell or transfer this product either as a stand-alone product or as a component of another product. Any use of this product other than the permitted use without the express written authorization of Becton Dickinson and Company is strictly prohibited.

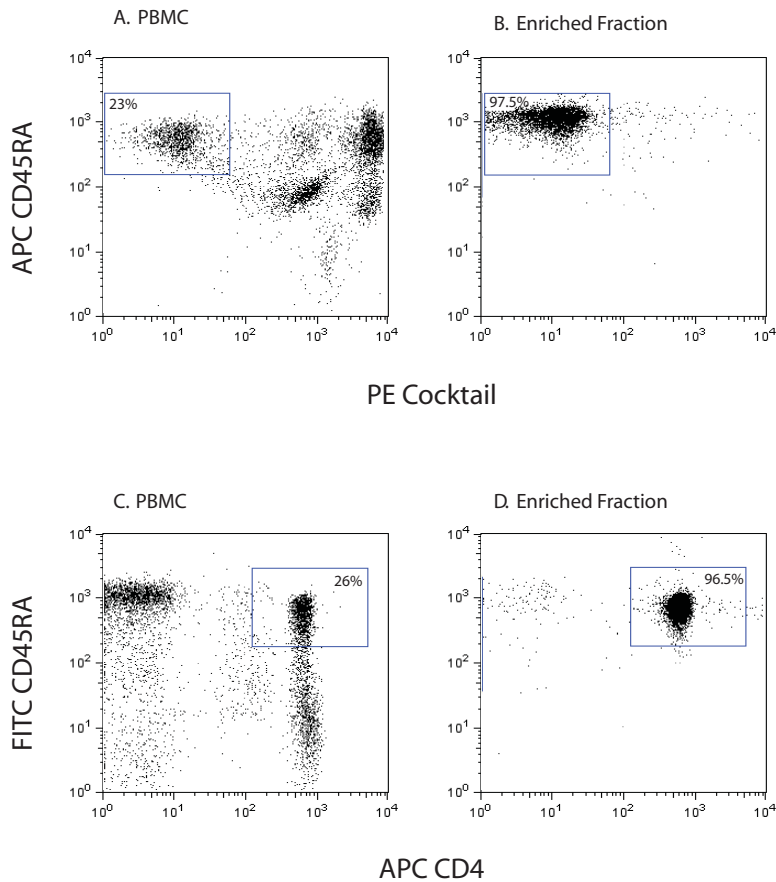
For Research Use Only. Not for use in diagnostic or therapeutic procedures. Not for resale.

BD, BD Logo and all other trademarks are the property of Becton, Dickinson and Company. ©2003 BD
 558521 10/17/06



BD

BD Biosciences



Enrichment of naïve CD4⁺ T cells from human peripheral blood. PBMC were labeled with the BD IMag™ Human Naïve CD4⁺ T cell Enrichment Set – DM and separated on the BD IMagnet™ (Cat. no. 552311) according to the accompanying Protocol. To demonstrate the efficiency of the enrichment, for panels A and B, cells were stained with a cocktail consisting of PE-conjugated anti-human CD8 (Cat. No. 555367), CD11b (Cat. No. 555388), CD16 (Cat. No. 555407), CD19 (Cat. No. 555413), CD36 (Cat. No. 555455), CD45RO (Cat. No. 555493), CD56 (Cat. No. 555516), CD123 (Cat. No. 555644), CD235a (Cat. No. 555570), and $\gamma\delta$ TCR (Cat. No. 555717) to detect non-naïve CD4⁺ cells, and an APC-conjugated anti-human CD45RA (Cat. No. 550855) to detect naïve cells. For panels C and D, cells were stained with APC-conjugated anti-human CD4 (Cat. No. 555349) and a FITC-conjugated CD45RA (Cat. No. 555488) to show the percentage of naïve CD4⁺ T cells. Dead cells were excluded by staining with 7-Amino-actinomycin D (7-AAD). Flow cytometry was performed on a BD FACSCalibur™ flow cytometry system.

Please refer to the Enrichment Flow Chart on the next page to identify the cell populations represented in this figure. The percentage of naïve CD4⁺ T cells is indicated in each panel. Panels A and C, show the unseparated PBMC while panels B and D show the twice-enriched fraction after three 6-minute magnetic separations with an additional 3-10 minute separation.

Please see the next page.

Page 2 of 4

BD Biosciences Pharmingen

www.bdbiosciences.com

United States	Canada	Europe	Japan	Asia Pacific	Latin America/Caribbean
877.232.8995	888.259.0187	32.53.720.211	0120.8555.90	65.6861.0633	55.11.5185.9995

For country-specific contact information, visit www.bdbiosciences.com/how_to_order/

Conditions: The information disclosed herein is not to be construed as a recommendation to use the above product in violation of any patents. BD Biosciences will not be held responsible for patent infringement or other violations that may occur with the use of our products. Purchase does not include or carry any right to resell or transfer this product either as a stand-alone product or as a component of another product. Any use of this product other than the permitted use without the express written authorization of Becton Dickinson and Company is strictly prohibited.

For Research Use Only. Not for use in diagnostic or therapeutic procedures. Not for resale.

BD, BD Logo and all other trademarks are the property of Becton, Dickinson and Company. ©2003 BD

558521

10/17/06

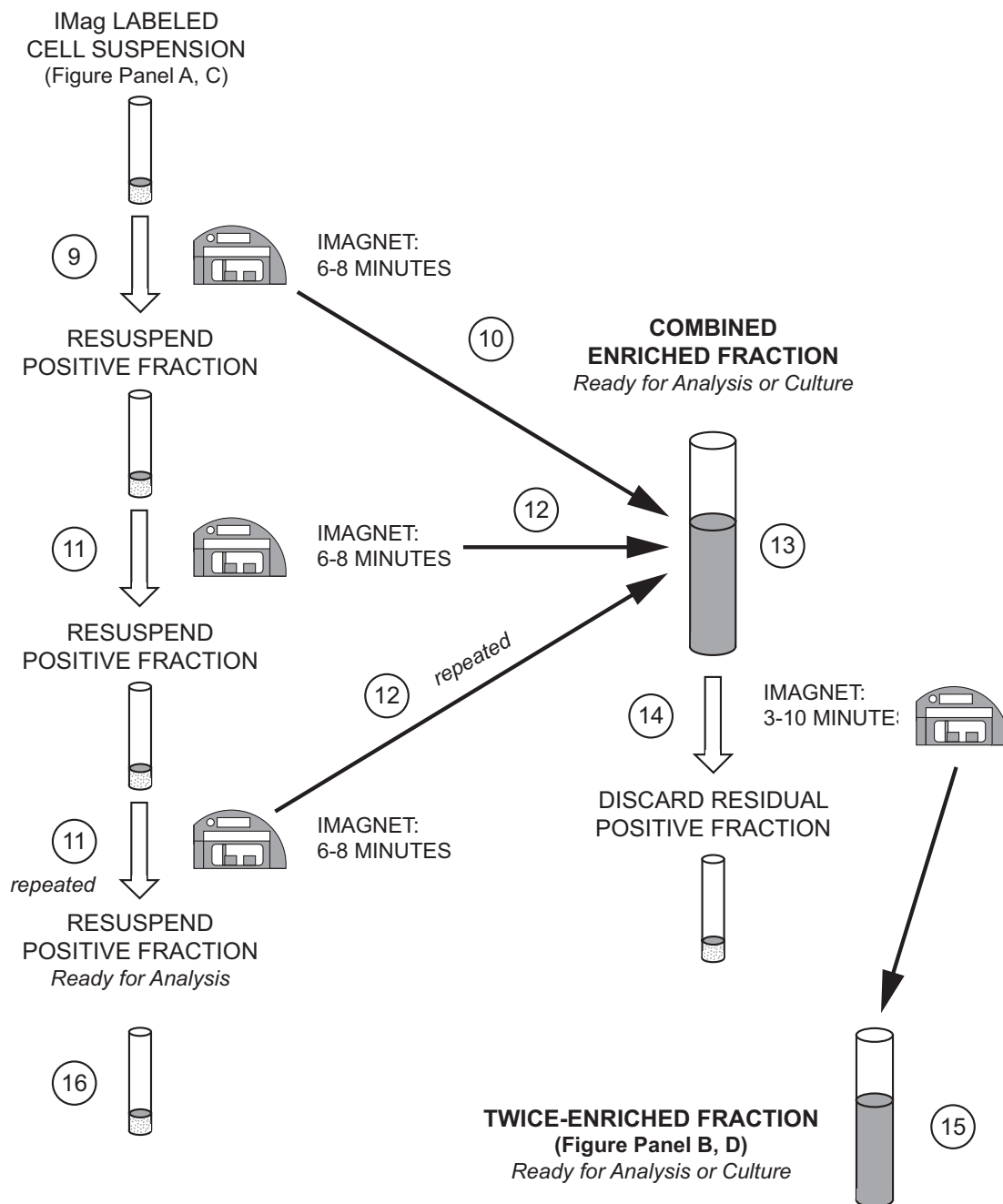


BD

BD Biosciences

ENRICHMENT FLOW CHART

(The circled numbers correspond to the steps of the Protocol on the following page.)



Please see the next page.

BD Biosciences Pharmingen

www.bdbiosciences.com

United States 877.232.8995 Canada 888.259.0187 Europe 32.53.720.211 Japan 0120.8555.90 Asia Pacific 65.6861.0633 Latin America/Caribbean 55.11.5185.9995
For country-specific contact information, visit www.bdbiosciences.com/how_to_order/

Conditions: The information disclosed herein is not to be construed as a recommendation to use the above product in violation of any patents. BD Biosciences will not be held responsible for patent infringement or other violations that may occur with the use of our products. Purchase does not include or carry any right to resell or transfer this product either as a stand-alone product or as a component of another product. Any use of this product other than the permitted use without the express written authorization of Becton Dickinson and Company is strictly prohibited.

For Research Use Only. Not for use in diagnostic or therapeutic procedures. Not for resale.

BD, BD Logo and all other trademarks are the property of Becton, Dickinson and Company. ©2003 BD
558521 10/17/06



BD

BD Biosciences

MAGNETIC LABELING AND ENRICHMENT PROTOCOL

1. Prepare 1X BD IMag™ buffer: Dilute BD IMag™ Buffer (10X) (Cat. no. 552362) 1:10 with sterile distilled water or prepare Phosphate Buffered Saline (PBS) supplemented with 0.5% BSA, 2 mM EDTA, and 0.1% sodium azide.
2. Prepare PBMC from anti-coagulated human blood, preferably by density gradient centrifugation using Ficoll-Paque™.*
3. Count the cells, and resuspend them in 1X BD IMag™ buffer at a concentration of 50×10^6 cells/ml.
4. Add the Human Naïve CD4⁺ T Cell Enrichment Cocktail at 5 µl per 1×10^6 cells, and incubate at room temperature for 15 minutes.†
5. Wash the labeled cells with a 10X excess volume of 1X BD IMag™ buffer, centrifuge at $300 \times g$ for 10 minutes, and carefully aspirate **ALL** the supernatant.
6. Vortex the BD IMag™ Streptavidin Particles Plus - DM thoroughly, and resuspend the cell pellet in 7.5 µl of particles per 1×10^6 cells.
Please note that this volume of IMag Streptavidin Particles is higher than that used in most BD IMag enrichment sets and that this Set contains a greater total volume of these particles to account for this difference.
7. **MIX THOROUGHLY.** Incubate at room temperature for 30 minutes.†
8. Bring the labeling volume up to 10 to 80×10^6 cells/ml with 1X BD IMag™ buffer.
9. Transfer the labeled cells to a 12 x 75 mm round-bottom test tube (eg, BD Falcon™, Cat. no. 352058), maximum volume added not to exceed 1.0 ml. Place this positive-fraction tube on the BD IMagnet™ (horizontal position) for 6 to 8 minutes.
 - For greater volume, divide the cells into multiple 12 X 75 mm round-bottom test tubes or transfer the cells to a 17 x 100 mm round-bottom test tube (eg, BD Falcon™, Cat. no. 352057), maximum volume added not to exceed 3.0 ml. Place this positive-fraction tube on the BD IMagnet™ (vertical position) for 8 minutes.
10. With the tube on the BD IMagnet™ and using a sterile glass Pasteur pipette, carefully aspirate the supernatant (enriched fraction) and place in a new sterile tube.
11. Remove the positive-fraction tube from the BD IMagnet™, and add 1X BD IMag™ buffer to the same volume as in Step 8. Resuspend the positive fraction well by pipetting up and down 10 to 15 times (**avoid creating bubbles**), and place the tube back on the BD IMagnet™ for 6 to 8 minutes.
 - For 17 x 100 mm tube: Place on the BD IMagnet™ for 8 minutes.
12. Using a new sterile Pasteur pipette, carefully aspirate the supernatant and combine with the enriched fraction from Step 10 above.
13. Repeat Steps 11 and 12. The combined enriched fraction contains naïve CD4⁺ cells with no bound antibodies or magnetic particles.
14. To increase the purity of the combined enriched fraction, place the tube containing the combined enriched fraction on the BD IMagnet™ for another 3-10 minutes. Increased magnet time will increase purity but lower recovery.
 - For 17 x 100 mm tube: Place on the BD IMagnet™ for 6 minutes.
15. Carefully aspirate the supernatant and place in a new sterile tube. This is the twice-enriched naïve CD4⁺ fraction. The cells are ready to be processed for downstream applications.
16. The positive-fraction cells remaining in the original tube can be resuspended in an appropriate buffer or culture medium for downstream applications, including flow cytometry, if desired.
17. Samples of the total cell suspension, the positive and enriched fractions should be analyzed by flow cytometry to evaluate the efficiency of the cell-separation procedure.

NOTES:

* Hints for successful cell preparation:

- Draw the blood into a tube containing EDTA (for example, BD Vacutainer® EDTA tube, Cat. no. 366457 or 367661).
- Remove the platelet rich plasma by centrifuging once at $220-240 \times g$.
- Wash 2-3 times in PBS after the density gradient separation.
- After the final wash, resuspend the cells at a relatively high concentration in 1X BD IMag™ buffer and proceed to step 3.

† Avoid nonspecific labeling by working quickly and adhering to recommended incubation times.

Ficoll-Paque is a trademark of Amersham plc.

Page 4 of 4

BD Biosciences Pharmingen

www.bdbiosciences.com

United States	Canada	Europe	Japan	Asia Pacific	Latin America/Caribbean
877.232.8995	888.259.0187	32.53.720.211	0120.8555.90	65.6861.0633	55.11.5185.9995

For country-specific contact information, visit www.bdbiosciences.com/how_to_order/

Conditions: The information disclosed herein is not to be construed as a recommendation to use the above product in violation of any patents. BD Biosciences will not be held responsible for patent infringement or other violations that may occur with the use of our products. Purchase does not include or carry any right to resell or transfer this product either as a stand-alone product or as a component of another product. Any use of this product other than the permitted use without the express written authorization of Becton Dickinson and Company is strictly prohibited.

For Research Use Only. Not for use in diagnostic or therapeutic procedures. Not for resale.

BD, BD Logo and all other trademarks are the property of Becton, Dickinson and Company. ©2003 BD
558521 10/17/06



BD

BD Biosciences