

## Technical Data Sheet

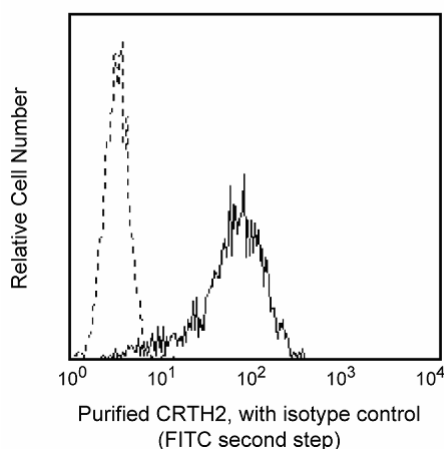
## Purified Rat Anti-Human CD294

## Product Information

<b>Material Number:</b>	<b>558412</b>
<b>Alternate Name:</b>	CRTH2
<b>Size:</b>	0.1 mg
<b>Concentration:</b>	0.5 mg/ml
<b>Clone:</b>	BM16
<b>Immunogen:</b>	Transfectant cells
<b>Isotype:</b>	Rat IgG2a, $\kappa$
<b>Reactivity:</b>	QC Testing: Human
<b>Storage Buffer:</b>	Aqueous buffered solution containing $\leq 0.09\%$ sodium azide.

## Description

Monoclonal antibody BM16 reacts with CRTH2 (chemoattractant receptor-homologous molecule expressed on Th2 cells). CRTH2 is a member of the G protein-coupled leukocyte chemoattractant receptor family and it is expressed on Th2, but not Th1 lineage cells. It is detectable on CD4+ T cells in fresh PBMC and no significant expression on B cells and NK cells. CRTH2 is also expressed on peripheral blood basophils and eosinophils, suggesting its involvement allergic reactions. Phenotypic analysis of CD4+ T cells expressing CRTH2 demonstrated CD45RA-, CD45RO+ and CD25+. These cells produce Th2- but little or no Th1-type cytokines upon stimulation with PMA and Ionomycin.



*Profile of anti-CRTH2 (BM16) reactivity on HUT 78 cells analyzed by flow cytometry. Second step staining with Cat. No. 554016.*

## Preparation and Storage

The monoclonal antibody was purified from tissue culture supernatant or ascites by affinity chromatography.

Store undiluted at 4°C.

## Application Notes

## Application

Flow cytometry	Routinely Tested
----------------	------------------

## Suggested Companion Products

Catalog Number	Name	Size	Clone
555841	Purified Rat IgG2a, $\kappa$ Isotype Control	0.1 mg	R35-95
554016	FITC Goat Anti-Rat Ig	0.5 mg	Polyclonal

## Product Notices

- Since applications vary, each investigator should titrate the reagent to obtain optimal results.
- Please refer to [www.bdbiosciences.com/pharmingen/protocols](http://www.bdbiosciences.com/pharmingen/protocols) for technical protocols.
- Caution: Sodium azide yields highly toxic hydrazoic acid under acidic conditions. Dilute azide compounds in running water before discarding to avoid accumulation of potentially explosive deposits in plumbing.

## BD Biosciences

[bdbiosciences.com](http://bdbiosciences.com)

United States	Canada	Europe	Japan	Asia Pacific	Latin America/Caribbean
877.232.8995	888.259.0187	32.53.720.550	0120.8555.90	65.6861.0633	55.11.5185.9995

For country-specific contact information, visit [bdbiosciences.com/how\\_to\\_order/](http://bdbiosciences.com/how_to_order/)

Conditions: The information disclosed herein is not to be construed as a recommendation to use the above product in violation of any patents. BD Biosciences will not be held responsible for patent infringement or other violations that may occur with the use of our products. Purchase does not include or carry any right to resell or transfer this product either as a stand-alone product or as a component of another product. Any use of this product other than the permitted use without the express written authorization of Becton Dickinson and Company is strictly prohibited.

For Research Use Only. Not for use in diagnostic or therapeutic procedures. Not for resale.

BD, BD Logo and all other trademarks are the property of Becton, Dickinson and Company. ©2008 BD



## References

- Cosmi L, Annunziato F, Galli MIG , Maggi RME , Nagata K, Romagnani S. CRTH2 is the most reliable marker for the detection of circulating human type 2 Th and type 2 T cytotoxic cells in health and disease. *Eur J Immunol.* 2000; 30(10):2972-2979.(Biology)
- Nagata K, Hirai H, Tanaka K, et al. CRTH2, an orphan receptor of T-helper-2-cells, is expressed on basophils and eosinophils and responds to mast cell-derived factor(s). *FEBS Lett.* 1999; 459(2):195-199.(Biology)
- Nagata K, Tanaka K, Ogawa K, et al. Selective expression of a novel surface molecule by human Th2 cells in vivo. *J Immunol.* 1999; 162(3):1278-1286.(Biology)