

Technical Data Sheet

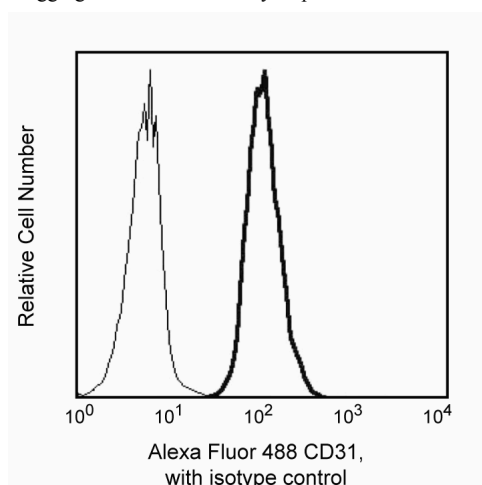
Alexa Fluor® 488 Mouse Anti-Human CD31

Product Information

Material Number:	558068
Alternate Name:	PECAM-1
Size:	100 tests
Vol. per Test:	5 µl
Clone:	M89D3
Isotype:	Mouse IgG2a, κ
Reactivity:	QC Testing: Human
Workshop:	NA
Storage Buffer:	Aqueous buffered solution containing BSA and ≤0.09% sodium azide.

Description

Reacts with CD31, also known as platelet endothelial cell adhesion molecule - 1 (PECAM-1), a single chain, type I transmembrane protein of approximately 130 - 140 kDa. CD31 is a member of the immunoglobulin supergene family, its extracellular region is composed of 574 amino acids and contains six C2-type Ig domains, its intracellular region is composed of 118 residues. CD31 (PECAM-1) is expressed on endothelial cells, platelets, monocytes, neutrophils and NK cells. It has also been observed on subsets of T cells, but not on circulating B cells. It has been implicated in a number of cellular phenomena, including vascular wound healing, angiogenesis, and transendothelial migration of leukocytes and platelet aggregation in inflammatory responses.



Profile of CD31 (M89D3) reactivity on peripheral blood granulocytes analyzed by flow cytometry.

Preparation and Storage

The monoclonal antibody was purified from tissue culture supernatant or ascites by affinity chromatography. The antibody was conjugated to Alexa Fluor® 488 under optimum conditions, and unreacted Alexa Fluor® 488 was removed. Store undiluted at 4°C and protected from prolonged exposure to light. Do not freeze.

Application Notes

Application

Flow cytometry	Routinely Tested
----------------	------------------

Suggested Companion Products

Catalog Number	Name	Size	Clone
557703	Alexa Fluor® 488 Mouse IgG2a, κ Isotype Control	100 tests	G155-178

Product Notices

1. This reagent has been pre-diluted for use at the recommended Volume per Test. We typically use 1×10^6 cells in a 100-µl experimental sample (a test).
2. Since applications vary, each investigator should titrate the reagent to obtain optimal results.
3. Please refer to www.bdbiosciences.com/pharmingen/protocols for technical protocols.

BD Biosciences

bdbiosciences.com

United States	Canada	Europe	Japan	Asia Pacific	Latin America/Caribbean
877.232.8995	888.259.0187	32.53.720.550	0120.8555.90	65.6861.0633	55.11.5185.9995

For country-specific contact information, visit bdbiosciences.com/how_to_order/

Conditions: The information disclosed herein is not to be construed as a recommendation to use the above product in violation of any patents. BD Biosciences will not be held responsible for patent infringement or other violations that may occur with the use of our products. Purchase does not include or carry any right to resell or transfer this product either as a stand-alone product or as a component of another product. Any use of this product other than the permitted use without the express written authorization of Becton Dickinson and Company is strictly prohibited.

For Research Use Only. Not for use in diagnostic or therapeutic procedures. Not for resale.

BD, BD Logo and all other trademarks are the property of Becton, Dickinson and Company. ©2008 BD



4. Alexa Fluor® 488 fluorochrome emission is collected at the same instrument settings as for fluorescein isothiocyanate (FITC).
5. The Alexa Fluor®, Pacific Blue™, and Cascade Blue® dye antibody conjugates in this product are sold under license from Molecular Probes, Inc. for research use only, excluding use in combination with microarrays, or as analyte specific reagents. The Alexa Fluor® dyes (except for Alexa Fluor® 430), Pacific Blue™ dye, and Cascade Blue® dye are covered by pending and issued patents.
6. Source of all serum proteins is from USDA inspected abattoirs located in the United States.
7. Caution: Sodium azide yields highly toxic hydrazoic acid under acidic conditions. Dilute azide compounds in running water before discarding to avoid accumulation of potentially explosive deposits in plumbing.
8. Alexa Fluor® is a registered trademark of Molecular Probes, Inc., Eugene, OR.

References

DeLisser HM, Newman PJ, Albelda SM. Platelet endothelial cell adhesion molecule (CD31). *Curr Top Microbiol Immunol*. 1993; 184:37-45. (Biology)

Muller WA, Weigl SA, Deng X, Phillips DM. PECAM-1 is required for transendothelial migration of leukocytes. *J Exp Med*. 1993; 178(2):449-460. (Biology)

Schlossman S, Boumell L, et al, ed. *Leucocyte Typing V*. New York: Oxford University Press; 1995. (Biology)

Simmons DL, Walker C, Power C, Pigott R. Molecular cloning of CD31, a putative intercellular adhesion molecule closely related to carcinoembryonic antigen. *J Exp Med*. 1990 June; 171(6):2147-2152. (Biology)

Stockinger H, Gadd SJ, Eher R, Majdic O, Schreiber W, Kasinrerck W, Strass B, Schnabl E, Knapp W.. Molecular characterization and functional analysis of the leukocyte surface protein CD31. *J Immunol*. 1990 December; 145(11):3889-3897. (Biology)

Vaporciyan AA, DeLisser HM, Yan HC, et al. Involvement of platelet-endothelial cell adhesion molecule-1 in neutrophil recruitment in vivo. *Science*. 1993; 262(5139):1580-1582. (Biology)