

Technical Data Sheet

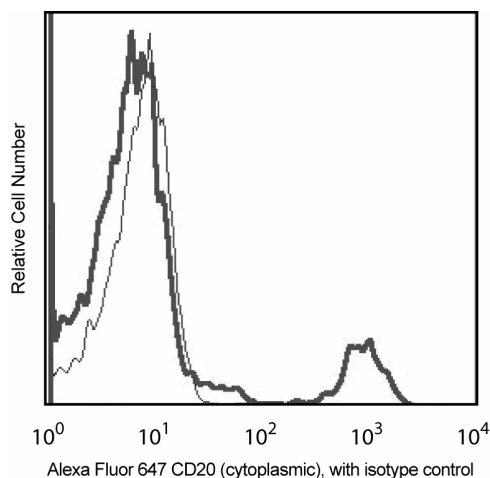
Alexa Fluor® 647 Mouse Anti-Human CD20

Product Information

Material Number:	558054
Alternate Name:	MS4A1; membrane-spanning 4-domains subfamily A member 1; B1; Bp35; LEU-16
Size:	50 Tests
Vol. per Test:	20 µl
Clone:	H1 (also known as FB1)
Immunogen:	Human B lymphoma cell line
Isotype:	Mouse (BALB/c) IgG2a, κ
Reactivity:	QC Testing: Human
Workshop:	V cB010
Storage Buffer:	Aqueous buffered solution containing BSA and ≤0.09% sodium azide.

Description

The H1 (FB1) antibody specifically binds to a cytoplasmic domain of CD20. CD20 is a 33-37-kDa four transmembrane phosphoprotein that is expressed by B lymphocytes from the pre-B stage and most malignant B cells and is lost during plasma cell differentiation. Low level CD20 expression is observed on a subset of normal circulating T lymphocytes, and CD20-positive T-cell lymphomas have been reported. The CD20 molecule is associated with membrane lipid raft domains, acts as a channel for calcium ions, and is involved in the regulation of B cell activation and survival. The cytoplasmic domain regions are serine and threonine rich and contain multiple phosphorylation consensus sequences.



Analysis of CD20 (cytoplasmic) in human peripheral blood lymphocytes. Human peripheral blood mononuclear cells were fixed with pre-warmed BD Cytofix™ buffer (Cat. No. 554655) for 10 minutes at 37°C and permeabilized with BD Phosflow™ Perm Buffer II (Cat. No. 558052) on ice for 30 minutes. The cells were then stained with either Alexa Fluor® 647 Mouse IgG2a, κ, isotype control (Cat. No. 558053, thin line) or Alexa Fluor® 647 Mouse anti-human CD20 (cytoplasmic) (bold line). For data analysis, lymphocytes were selected by their scatter profile. CD20 (cytoplasmic) was not detected in the monocytes (not shown). Flow cytometry was performed on a BD FACSCalibur™ flow cytometry system.

Preparation and Storage

Store undiluted at 4°C and protected from prolonged exposure to light. Do not freeze.

The monoclonal antibody was purified from tissue culture supernatant or ascites by affinity chromatography.

The antibody was conjugated to Alexa Fluor® 647 under optimum conditions, and unreacted Alexa Fluor® 647 was removed.

Application Notes

Application

Intracellular staining (flow cytometry)	Routinely Tested
---	------------------

Recommended Assay Procedure:

This antibody conjugate is suitable for intracellular staining of human whole blood (using BD Phosflow™ Lyse/Fix Buffer) and peripheral blood mononuclear cells (using BD Cytofix™ Fixation Buffer or BD Phosflow™ Fix Buffer I). Any of the three BD Phosflow™ permeabilization buffers may be used.

Suggested Companion Products

Catalog Number	Name	Size	Clone
557870	Fix Buffer I	250 mL	(none)
554655	Fixation Buffer	100 mL	(none)
558049	Lyse/Fix Buffer 5X	250 mL	(none)

BD Biosciences

bdbiosciences.com

United States	Canada	Europe	Japan	Asia Pacific	Latin America/Caribbean
877.232.8995	800.268.5430	32.2.400.98.95	0120.8555.90	65.6861.0633	55.11.5185.9995

For country contact information, visit bdbiosciences.com/contact

Conditions: The information disclosed herein is not to be construed as a recommendation to use the above product in violation of any patents. BD Biosciences will not be held responsible for patent infringement or other violations that may occur with the use of our products. Purchase does not include or carry any right to resell or transfer this product either as a stand-alone product or as a component of another product. Any use of this product other than the permitted use without the express written authorization of Becton, Dickinson and Company is strictly prohibited.

For Research Use Only. Not for use in diagnostic or therapeutic procedures. Not for resale.

Unless otherwise noted, BD, BD Logo and all other trademarks are property of Becton, Dickinson and Company. © 2014 BD



557885	Perm/Wash Buffer I	125 mL	(none)
558052	Perm Buffer II	125 mL	(none)
558050	Perm Buffer III	125 mL	(none)
558053	Alexa Fluor® 647 Mouse IgG2a, κ Isotype Control	50 Tests	MOPC-173

Product Notices

1. This reagent has been pre-diluted for use at the recommended Volume per Test. We typically use 1×10^6 cells in a 100-μl experimental sample (a test).
2. Please refer to www.bdbiosciences.com/pharming/protocols for technical protocols.
3. For fluorochrome spectra and suitable instrument settings, please refer to our Multicolor Flow Cytometry web page at www.bdbiosciences.com/colors.
4. Caution: Sodium azide yields highly toxic hydrazoic acid under acidic conditions. Dilute azide compounds in running water before discarding to avoid accumulation of potentially explosive deposits in plumbing.
5. Source of all serum proteins is from USDA inspected abattoirs located in the United States.
6. The Alexa Fluor®, Pacific Blue™, and Cascade Blue® dye antibody conjugates in this product are sold under license from Molecular Probes, Inc. for research use only, excluding use in combination with microarrays, or as analyte specific reagents. The Alexa Fluor® dyes (except for Alexa Fluor® 430), Pacific Blue™ dye, and Cascade Blue® dye are covered by pending and issued patents.
7. Alexa Fluor® 647 fluorochrome emission is collected at the same instrument settings as for allophycocyanin (APC).
8. Alexa Fluor® is a registered trademark of Molecular Probes, Inc., Eugene, OR.
9. An isotype control should be used at the same concentration as the antibody of interest.

References

Cragg MS, Walshe CA, Ivanov AO, Glennie MJ. The biology of CD20 and its potential as a target for mAb therapy. *Curr Dir Autoimmun*. 2005; 8:140-174. (Biology)

Kitamura A, Yamashita Y, Mori N. CD20-positive cytotoxic T cell lymphoma: report of two cases and review of the literature. *J Clin Exp Hematop*. 2005; 45(1):45-50. (Biology)

Nozawa Y, Abe M, Ohno H, Fukuhara S, Wakasa H. Production of two monoclonal antibodies (FB1 and FB21) useful for the identification of human B lymphocytes in formalin-fixed, paraffin-embedded tissues. *J Pathol*. 1994; 173:347-354. (Immunogen)

Nozawa Y, Abe M, Wakasa H. Three mAb, FUN-1, FB1, and FB21, that recognize B-cell antigens in frozen or paraffin-embedded tissue sections. In: Schlossman SF, Boumsell L, Gilks W, et al, ed. *Leukocyte Typing V: White Cell Differentiation Antigens*. Oxford: Oxford University Press; 1995:705-706. (Immunogen)

BD Biosciences

bdbiosciences.com

United States	Canada	Europe	Japan	Asia Pacific	Latin America/Caribbean
877.232.8995	800.268.5430	32.2.400.98.95	0120.8555.90	65.6861.0633	55.11.5185.9995

For country contact information, visit bdbiosciences.com/contact

Conditions: The information disclosed herein is not to be construed as a recommendation to use the above product in violation of any patents. BD Biosciences will not be held responsible for patent infringement or other violations that may occur with the use of our products. Purchase does not include or carry any right to resell or transfer this product either as a stand-alone product or as a component of another product. Any use of this product other than the permitted use without the express written authorization of Becton, Dickinson and Company is strictly prohibited.

For Research Use Only. Not for use in diagnostic or therapeutic procedures. Not for resale.

Unless otherwise noted, BD, BD Logo and all other trademarks are property of Becton, Dickinson and Company. © 2014 BD

