

Technical Data Sheet

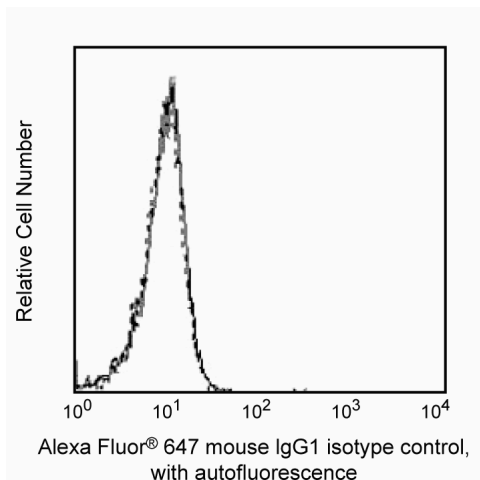
Alexa Fluor® 647 Mouse IgG1 κ Isotype control

Product Information

Material Number:	557783
Size:	50 Tests
Vol. per Test:	20 µl
Clone:	MOPC-21
Isotype:	Mouse IgG1, κ
Storage Buffer:	Aqueous buffered solution containing BSA and ≤0.09% sodium azide.

Description

The MOPC-21 immunoglobulin is a mouse myeloma protein. The MOPC-21 immunoglobulin was selected as an isotype control following screening for low background on a variety of mouse and human tissues.



Flow cytometric analysis on U-937 cells. U-937 cells (ATCC CRL-1593) were serum starved overnight (RPMI containing 0.1% FCS). The following day cells were either left untreated (solid line) or treated (dotted line) with recombinant human IFN (Cat. No. 554617; 1000 U/ml for 10 minutes at 37°C). Cells were then fixed in 2% paraformaldehyde (10 minutes at 37°C) and permeabilized by adding 90% methanol, (BD Phosflow™ Perm Buffer III, Cat. No. 558050) to the cell pellet (30 minutes on ice or overnight at -20°C). Cells were washed twice in BD Pharmingen™ Stain Buffer (Cat. No. 554656) and stained with Alexa Fluor® 647 Isotype Control antibody (1 hour at RT; Cat. No. 557783). The cells were analyzed on a BD FACSCalibur™ flow cytometry system.

Preparation and Storage

Store undiluted at 4°C and protected from prolonged exposure to light. Do not freeze.

The monoclonal antibody was purified from tissue culture supernatant or ascites by affinity chromatography.

The antibody was conjugated to Alexa Fluor® 647 under optimum conditions, and unreacted Alexa Fluor® 647 was removed.

Application Notes

Application

Intracellular staining (flow cytometry)	Routinely Tested
Isotype control	Routinely Tested

Recommended Assay Procedure:

For non-intracellular flow applications, investigators are encouraged to try BD Pharmingen™ Alexa Fluor® 647 Mouse IgG1 κ Isotype Control, Clone MOPC-21, Cat. No. 557714.

Suggested Companion Products

Catalog Number	Name	Size	Clone
554656	Stain Buffer (FBS)	500 mL	(none)
557714	Alexa Fluor® 647 Mouse IgG1 κ Isotype Control	100 Tests	MOPC-21
558050	Perm Buffer III	125 mL	(none)
554655	Fixation Buffer	100 mL	(none)

Product Notices

- Please refer to www.bdbiosciences.com/pharmingen/protocols for technical protocols.
- This reagent has been pre-diluted for use at the recommended Volume per Test. We typically use 1×10^6 cells in a 100-µl experimental sample (a test).
- Alexa Fluor® 647 fluorochrome emission is collected at the same instrument settings as for allophycocyanin (APC).
- Alexa Fluor® is a registered trademark of Molecular Probes, Inc., Eugene, OR.

BD Biosciences

bdbiosciences.com

United States	Canada	Europe	Japan	Asia Pacific	Latin America/Caribbean
877.232.8995	800.268.5430	32.2.400.98.95	0120.8555.90	65.6861.0633	55.11.5185.9995

For country contact information, visit bdbiosciences.com/contact

Conditions: The information disclosed herein is not to be construed as a recommendation to use the above product in violation of any patents. BD Biosciences will not be held responsible for patent infringement or other violations that may occur with the use of our products. Purchase does not include or carry any right to resell or transfer this product either as a stand-alone product or as a component of another product. Any use of this product other than the permitted use without the express written authorization of Becton, Dickinson and Company is strictly prohibited.

For Research Use Only. Not for use in diagnostic or therapeutic procedures. Not for resale.

Unless otherwise noted, BD, BD Logo and all other trademarks are property of Becton, Dickinson and Company. © 2014 BD



5. The Alexa Fluor®, Pacific Blue™, and Cascade Blue® dye antibody conjugates in this product are sold under license from Molecular Probes, Inc. for research use only, excluding use in combination with microarrays, or as analyte specific reagents. The Alexa Fluor® dyes (except for Alexa Fluor® 430), Pacific Blue™ dye, and Cascade Blue® dye are covered by pending and issued patents.
6. Source of all serum proteins is from USDA inspected abattoirs located in the United States.
7. Caution: Sodium azide yields highly toxic hydrazoic acid under acidic conditions. Dilute azide compounds in running water before discarding to avoid accumulation of potentially explosive deposits in plumbing.
8. For fluorochrome spectra and suitable instrument settings, please refer to our Multicolor Flow Cytometry web page at www.bdbiosciences.com/colors.
9. An isotype control should be used at the same concentration as the antibody of interest.

References

Prussin C, Metcalfe DD. Detection of intracytoplasmic cytokine using flow cytometry and directly conjugated anti-cytokine antibodies. *J Immunol Methods*. 1995; 188(1):117-128. (Clone-specific: Blocking)

BD Biosciences

bdbiosciences.com

United States	Canada	Europe	Japan	Asia Pacific	Latin America/Caribbean
877.232.8995	800.268.5430	32.2.400.98.95	0120.8555.90	65.6861.0633	55.11.5185.9995

For country contact information, visit bdbiosciences.com/contact

Conditions: The information disclosed herein is not to be construed as a recommendation to use the above product in violation of any patents. BD Biosciences will not be held responsible for patent infringement or other violations that may occur with the use of our products. Purchase does not include or carry any right to resell or transfer this product either as a stand-alone product or as a component of another product. Any use of this product other than the permitted use without the express written authorization of Becton, Dickinson and Company is strictly prohibited.

For Research Use Only. Not for use in diagnostic or therapeutic procedures. Not for resale.

Unless otherwise noted, BD, BD Logo and all other trademarks are property of Becton, Dickinson and Company. © 2014 BD

