

Technical Data Sheet

**FITC Mouse Anti-Human HLA-ABC**

**Product Information**

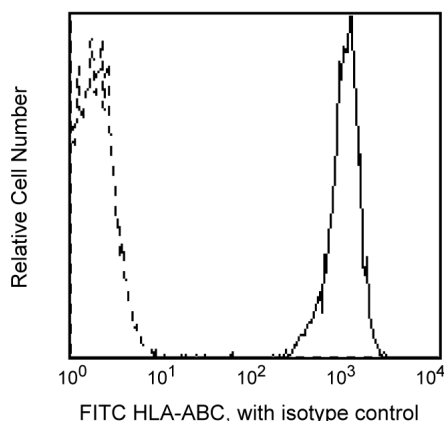
**Material Number:** 557348  
**Size:** 50 tests  
**Vol. per Test:** 20 µl  
**Clone:** G46-2.6  
**Isotype:** Mouse IgG1 κ  
**Reactivity:** Human  
 QC Testing: Baboon or Rhesus or Cynomolgus  
**Storage Buffer:** Aqueous buffered solution containing BSA and ≤0.09% sodium azide.

**Description**

Reacts with a monomorphic epitope of major histocompatibility Class I antigens widely distributed on human nucleated cells.

This clone also cross-reacts with peripheral blood leukocytes of baboon, and both rhesus and cynomolgus macaque monkeys. The distribution on leukocytes is similar to that observed with peripheral blood leukocytes from normal human donors, with all lymphocytes, monocytes, and granulocytes being positive.

This antibody is routinely tested by flow cytometric analysis. Other applications were tested at BD Biosciences Pharmingen during antibody development only or reported in the literature.



*Profile of anti-HLA-ABC reactivity on peripheral blood lymphocytes of Baboon (papio anubis) analyzed by flow cytometry*

**Preparation and Storage**

The monoclonal antibody was purified from tissue culture supernatant or ascites by affinity chromatography. The antibody was conjugated with FITC under optimum conditions, and unreacted FITC was removed. Store undiluted at 4° C and protected from prolonged exposure to light. Do not freeze.

**Application Notes**

**Application**

Flow cytometry	Routinely Tested
----------------	------------------

**Suggested Companion Products**

Catalog Number	Name	Size	Clone
551954	FITC Mouse IgG1 Kappa Isotype Control	50 tests	MOPC-21

**BD Biosciences**

bdbiosciences.com

United States 877.232.8995 Canada 888.259.0187 Europe 32.53.720.550 Japan 0120.8555.90 Asia Pacific 65.6861.0633 Latin America/Caribbean 55.11.5185.9995

For country-specific contact information, visit [bdbiosciences.com/how\\_to\\_order/](http://bdbiosciences.com/how_to_order/)

Conditions: The information disclosed herein is not to be construed as a recommendation to use the above product in violation of any patents. BD Biosciences will not be held responsible for patent infringement or other violations that may occur with the use of our products. Purchase does not include or carry any right to resell or transfer this product either as a stand-alone product or as a component of another product. Any use of this product other than the permitted use without the express written authorization of Becton Dickinson and Company is strictly prohibited.

For Research Use Only. Not for use in diagnostic or therapeutic procedures. Not for resale.

BD, BD Logo and all other trademarks are the property of Becton, Dickinson and Company. ©2006 BD



**BD**

**BD Biosciences**

## Product Notices

1. This reagent has been pre-diluted for use at the recommended Volume per Test. We typically use  $1 \times 10^6$  cells in a 100- $\mu$ l experimental sample (a test).
2. Since applications vary, each investigator should titrate the reagent to obtain optimal results.
3. Please refer to [www.bdbiosciences.com/pharmingen/protocols](http://www.bdbiosciences.com/pharmingen/protocols) for technical protocols.
4. Caution: Sodium azide yields highly toxic hydrazoic acid under acidic conditions. Dilute azide compounds in running water before discarding to avoid accumulation of potentially explosive deposits in plumbing.
5. Source of all serum proteins is from USDA inspected abattoirs located in the United States.

## References

Barclay NA, Brown MH, Birkeland ML, et al, ed. *The Leukocyte Antigen FactsBook*. San Diego, CA: Academic Press; 1997.(Biology)  
Sopper S, Stahl-Hennig C, Demuth M, Johnston IC, Dorries R, ter Meulen V. Lymphocyte subsets and expression of differentiation markers in blood and lymphoid organs of rhesus monkeys. *Cytometry*. 1997; 29(4):351-362.(Biology)