

Technical Data Sheet

FITC Mouse Anti-Human CD18

Product Information

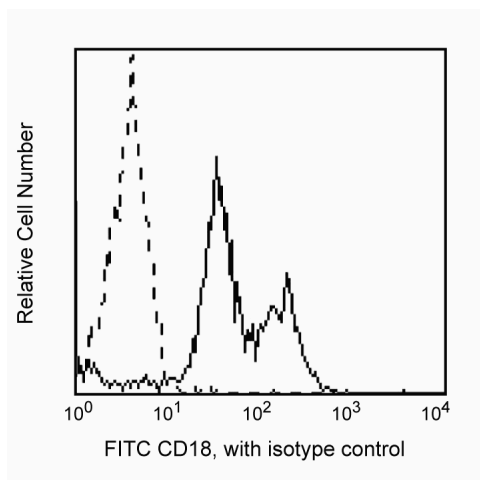
Material Number:	557156
Alternate Name:	Integrin β 2 chain
Size:	50 tests
Vol. per Test:	20 μ l
Clone:	6.7
Isotype:	Mouse IgG1, κ
Reactivity:	Human
	QC Testing: Rhesus or Cynomolgus
	Tested in Development: Pig, Rabbit
Workshop:	V BP368
Storage Buffer:	Aqueous buffered solution containing BSA and $\leq 0.09\%$ sodium azide.

Description

Reacts with β 2 integrin, a 90-95 kDa transmembrane protein, which associates non-covalently as a heterodimer with the α chains of CD11a, CD11b, or CD11c. CD18 is expressed on lymphocytes, monocytes, and more weakly on granulocytes. LFA-1 has been shown to play an important role in homotypic and heterotypic cellular adhesion in immune and inflammatory responses.

This clone also cross-reacts with a major subset of peripheral blood lymphocytes, all monocytes and granulocytes of both rhesus and cynomolgus macaque monkeys. The pattern of reactivity on these lymphocytes is similar to that observed with peripheral blood lymphocytes, monocytes and granulocytes from normal human donors, with both the CD3+ and CD20+ lymphocytes being CD18-positive.

This antibody is routinely tested by flow cytometric analysis. Other applications were tested at BD Biosciences Pharmingen during antibody development only or reported in the literature.



Profile of anti-CD18 reactivity on peripheral blood lymphocytes of Rhesus macaque (macaca mulatta) analyzed by flow cytometry

Preparation and Storage

The monoclonal antibody was purified from tissue culture supernatant or ascites by affinity chromatography.

The antibody was conjugated with FITC under optimum conditions, and unreacted FITC was removed.

Store undiluted at 4° C and protected from prolonged exposure to light. Do not freeze.

Application Notes

Application

Flow cytometry	Routinely Tested
----------------	------------------

BD Biosciences

www.bdbiosciences.com

United States	Canada	Europe	Japan	Asia Pacific	Latin America/Caribbean
877.232.8995	888.259.0187	32.53.720.550	0120.8555.90	65.6861.0633	55.11.5185.9995

For country-specific contact information, visit www.bdbiosciences.com/how_to_order/

Conditions: The information disclosed herein is not to be construed as a recommendation to use the above product in violation of any patents. BD Biosciences will not be held responsible for patent infringement or other violations that may occur with the use of our products. Purchase does not include or carry any right to resell or transfer this product either as a stand-alone product or as a component of another product. Any use of this product other than the permitted use without the express written authorization of Becton Dickinson and Company is strictly prohibited.

For Research Use Only. Not for use in diagnostic or therapeutic procedures. Not for resale.

BD, BD Logo and all other trademarks are the property of Becton, Dickinson and Company. ©2007 BD



Suggested Companion Products

Catalog Number	Name	Size	Clone
556649	FITC Mouse IgG1, κ Isotype Control	50 tests	MOPC-21

Product Notices

1. This reagent has been pre-diluted for use at the recommended Volume per Test. We typically use 1×10^6 cells in a 100- μ l experimental sample (a test).
2. Since applications vary, each investigator should titrate the reagent to obtain optimal results.
3. Please refer to www.bdbiosciences.com/pharming/en/protocols for technical protocols.
4. Caution: Sodium azide yields highly toxic hydrazoic acid under acidic conditions. Dilute azide compounds in running water before discarding to avoid accumulation of potentially explosive deposits in plumbing.
5. Source of all serum proteins is from USDA inspected abattoirs located in the United States.

References

Barclay NA, Brown MH, Birkeland ML, et al, ed. *The Leukocyte Antigen FactsBook*. San Diego, CA: Academic Press; 1997.(Biology)
Schlossman S, Boumell L, et al, ed. *Leucocyte Typing V*. New York: Oxford University Press; 1995.(Clone-specific)
Jacobsen CN, Aasted B, Broe MK, Petersen JL. Reactivities of 20 anti-human monoclonal antibodies with leucocytes from ten different animal species. *Vet Immunol Immunopathol*. 1993; 39(4):461-466.(Biology)
Reimann KA, Waite BC, Lee-Parritz DE, et al. Use of human leukocyte-specific monoclonal antibodies for clinically immunophenotyping lymphocytes of rhesus monkeys. *Cytometry*. 1994; 17(1):102-108.(Biology)
Sopper S, Stahl-Hennig C, Demuth M, Johnston IC, Dorries R, ter Meulen V. Lymphocyte subsets and expression of differentiation markers in blood and lymphoid organs of rhesus monkeys. *Cytometry*. 1997; 29(4):351-362.(Biology)