

## Technical Data Sheet

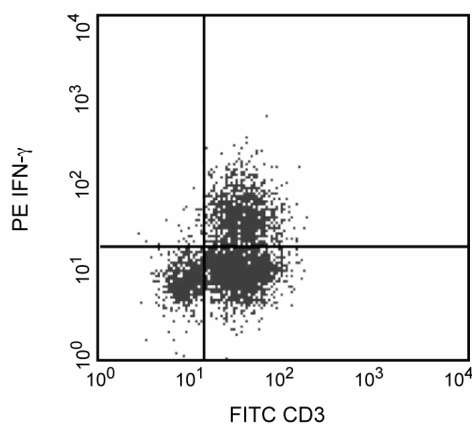
PE Mouse Anti-Human IFN- $\gamma$ 

## Product Information

Material Number:	557074
Size:	50 tests
Vol. per Test:	20 $\mu$ l
Clone:	4S.B3
Immunogen:	Partially purified human IFN- $\gamma$ from supernatants of human PBMC stimulated with <i>Staphylococcus aureus</i>
Isotype:	Mouse IgG1, $\kappa$
Reactivity:	Human
	QC Testing: Baboon or Rhesus or Cynomolgus
Storage Buffer:	Aqueous buffered solution containing BSA and $\leq 0.09\%$ sodium azide.

## Description

Clone 4S.B3 reacts with the human form of interferon- $\gamma$  (IFN- $\gamma$ ) detectable in the cytoplasm of a major subset of activated peripheral blood T lymphocytes. Clone 4S.B3 also cross-reacts with a cytoplasmic component of peripheral blood CD3+ lymphocytes of baboon, and both rhesus and cynomolgus macaque monkeys following five-hour treatment with phorbol myristate acetate (PMA) and Ca<sup>++</sup> ionophore (A23187) in the presence of monensin. The staining pattern of 4S.B3 in CD3+ cells is similar to that observed with peripheral blood T lymphocytes from normal human donors. This reagent is useful for intracellular immunofluorescent staining for flow cytometric analysis to identify and enumerate IFN- $\gamma$  + cells within a mixed cell population.



*Profile of anti-IFN- $\gamma$  reactivity on peripheral blood lymphocytes of Rhesus macaque (macaca mulatta) monkey analyzed by flow cytometry*

## Preparation and Storage

The monoclonal antibody was purified from tissue culture supernatant or ascites by affinity chromatography.

The antibody was conjugated with R-PE under optimum conditions, and unconjugated antibody and free PE were removed.

Store undiluted at 4°C and protected from prolonged exposure to light. Do not freeze.

## Application Notes

## Application

Intracellular staining (flow cytometry)	Routinely Tested
---	------------------

## Recommended Assay Procedure:

This product is routinely tested on the stimulated peripheral blood lymphocytes intracellularly by using BD Cytofix/Cytoperm kit (Cat No. 554714). Please check the kit manual for the methodology and refer to [www.bdbiosciences.com/pharmingen/protocols](http://www.bdbiosciences.com/pharmingen/protocols) for technical protocols.

## Suggested Companion Products

Catalog Number	Name	Size	Clone
554714	BD Cytofix/Cytoperm™ Fixation/Permeabilization Kit	250 tests	(none)
551436	PE Mouse IgG1 Kappa Isotype Control	50 tests	MOPC-21

## BD Biosciences

[bdbiosciences.com](http://bdbiosciences.com)

United States	Canada	Europe	Japan	Asia Pacific	Latin America/Caribbean
877.232.8995	888.268.5430	32.53.720.550	0120.8555.90	65.6861.0633	0800.771.7157

For country-specific contact information, visit [bdbiosciences.com/how\\_to\\_order/](http://bdbiosciences.com/how_to_order/)

Conditions: The information disclosed herein is not to be construed as a recommendation to use the above product in violation of any patents. BD Biosciences will not be held responsible for patent infringement or other violations that may occur with the use of our products. Purchase does not include or carry any right to resell or transfer this product either as a stand-alone product or as a component of another product. Any use of this product other than the permitted use without the express written authorization of Becton Dickinson and Company is strictly prohibited.

For Research Use Only. Not for use in diagnostic or therapeutic procedures. Not for resale.

BD, BD Logo and all other trademarks are the property of Becton, Dickinson and Company. ©2011 BD



## Product Notices

1. This reagent has been pre-diluted for use at the recommended Volume per Test. We typically use  $1 \times 10^6$  cells in a 100- $\mu$ l experimental sample (a test).
2. Since applications vary, each investigator should titrate the reagent to obtain optimal results.
3. Please refer to [www.bdbiosciences.com/pharming/en/protocols](http://www.bdbiosciences.com/pharming/en/protocols) for technical protocols.
4. For fluorochrome spectra and suitable instrument settings, please refer to our Fluorochrome Web Page at [www.bdbiosciences.com/colors](http://www.bdbiosciences.com/colors).
5. Caution: Sodium azide yields highly toxic hydrazoic acid under acidic conditions. Dilute azide compounds in running water before discarding to avoid accumulation of potentially explosive deposits in plumbing.
6. Source of all serum proteins is from USDA inspected abattoirs located in the United States.

## References

Meager A. Characterization of interferons and immunoassays. In: Clemens MJ, Morris AG, Gearing AJH, ed. *Lymphokines and Interferons. A Practical Approach*. Oxford: IRL Press Ltd; 1987:105-127. (Biology)

Prussin C, Metcalfe DD. Detection of intracytoplasmic cytokine using flow cytometry and directly conjugated anti-cytokine antibodies. *J Immunol Methods*. 1995; 188(1):117-128. (Methodology)

Sopfer S, Stahl-Hennig C, Demuth M, Johnston IC, Dorries R, ter Meulen V. Lymphocyte subsets and expression of differentiation markers in blood and lymphoid organs of rhesus monkeys. *Cytometry*. 1997; 29(4):351-362. (Biology)

Verdier F, Aujoulat M, Condevaux F, Descotes J. Determination of lymphocyte subsets and cytokine levels in cynomolgus monkeys. *Toxicology*. 1995; 105(1):81-90. (Biology)