

Technical Data Sheet

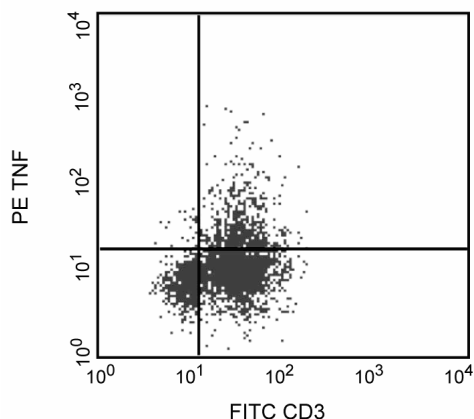
PE Mouse Anti-Human TNF

Product Information

Material Number:	557068
Size:	50 tests
Vol. per Test:	20 µl
Clone:	MAb11
Immunogen:	Recombinant Human TNF
Isotype:	Mouse IgG1, κ
Reactivity:	Human
Storage Buffer:	QC Testing: Baboon or Rhesus or Cynomolgus Aqueous buffered solution containing BSA and ≤0.09% sodium azide.

Description

Clone MAb11 reacts with the human form of tumor necrosis factor (TNF, formerly known as TNF-α) detectable in the cytoplasm of a major subset of activated peripheral blood T lymphocytes. Using standard procedures for detection of intracellular proteins, clone MAb11 also cross-reacts with activated peripheral blood CD3+ lymphocytes of baboon, and both rhesus and cynomolgus macaque monkeys following five-hour treatment with phorbol myristic acetate (PMA) and Ca⁺⁺ Ionophore (A23187) in the presence of monensin. The staining is restricted to CD3+ T cells and is similar to that observed with peripheral blood T lymphocytes from normal human donors.



Profile of intracellular reactivity of anti-TNF on stimulated peripheral blood mononuclear cells of rhesus macaque (Macaca mulatta) monkey analyzed by flow cytometry

Preparation and Storage

The monoclonal antibody was purified from tissue culture supernatant or ascites by affinity chromatography.

The antibody was conjugated with R-PE under optimum conditions, and unconjugated antibody and free PE were removed.

Store undiluted at 4°C and protected from prolonged exposure to light. Do not freeze.

Application Notes

Application

Intracellular staining (flow cytometry)	Routinely Tested
---	------------------

Suggested Companion Products

Catalog Number	Name	Size	Clone
556650	PE Mouse IgG1, κ Isotype Control	50 tests	MOPC-21
554715	BD Cytotfix/Cytoperm Plus Kit (with BD GolgiStop)	250 tests	(none)

Product Notices

- This reagent has been pre-diluted for use at the recommended Volume per Test. We typically use 1×10^6 cells in a 100-µl experimental sample (a test).
- Since applications vary, each investigator should titrate the reagent to obtain optimal results.
- Please refer to www.bdbiosciences.com/pharmingen/protocols for technical protocols.

BD Biosciences

bdbiosciences.com

United States	Canada	Europe	Japan	Asia Pacific	Latin America/Caribbean
877.232.8995	888.268.5430	32.53.720.550	0120.8555.90	65.6861.0633	0800.771.7157

For country-specific contact information, visit bdbiosciences.com/how_to_order/

Conditions: The information disclosed herein is not to be construed as a recommendation to use the above product in violation of any patents. BD Biosciences will not be held responsible for patent infringement or other violations that may occur with the use of our products. Purchase does not include or carry any right to resell or transfer this product either as a stand-alone product or as a component of another product. Any use of this product other than the permitted use without the express written authorization of Becton Dickinson and Company is strictly prohibited.

For Research Use Only. Not for use in diagnostic or therapeutic procedures. Not for resale.

BD, BD Logo and all other trademarks are the property of Becton, Dickinson and Company. ©2011 BD



4. For fluorochrome spectra and suitable instrument settings, please refer to our Fluorochrome Web Page at www.bdbiosciences.com/colors.
5. Caution: Sodium azide yields highly toxic hydrazoic acid under acidic conditions. Dilute azide compounds in running water before discarding to avoid accumulation of potentially explosive deposits in plumbing.
6. Source of all serum proteins is from USDA inspected abattoirs located in the United States.

References

- Danis VA, Franic GM, Rathjen DA, Brooks PM. Effects of granulocyte-macrophage colony-stimulating factor (GM-CSF), IL-2, interferon-gamma (IFN-gamma), tumour necrosis factor-alpha (TNF-alpha) and IL-6 on the production of immunoreactive IL-1 and TNF-alpha by human monocytes. *Clin Exp Immunol*. 1991; 85(1):143-150. (Clone-specific: ELISA)
- Meager A. Characterization of interferons and immunoassays. In: Clemens MJ, Morris AG, Gearing AJH, ed. *Lymphocytes and Interferons. A Practical Approach*. Oxford: IRL Press Ltd; 1987:105-127. (Biology)
- Prussin C, Metcalfe DD. Detection of intracytoplasmic cytokine using flow cytometry and directly conjugated anti-cytokine antibodies. *J Immunol Methods*. 1995; 188(1):117-128. (Methodology)
- Rathjen DA, Cowan K, Furphy LJ, Aston R. Antigenic structure of human tumour necrosis factor: recognition of distinct regions of TNF alpha by different tumour cell receptors. *Mol Immunol*. 1991; 28(1-2):79-86. (Clone-specific: ELISA)
- Sopper S, Stahl-Hennig C, Demuth M, Johnston IC, Dorries R, ter Meulen V. Lymphocyte subsets and expression of differentiation markers in blood and lymphoid organs of rhesus monkeys. *Cytometry*. 1997; 29(4):351-362. (Biology)
- Verdier F, Aujoulat M, Condevaux F, Descotes J. Determination of lymphocyte subsets and cytokine levels in cynomolgus monkeys. *Toxicology*. 1995; 105(1):81-90. (Biology)