

Technical Data Sheet

PE Mouse IgG3, κ Isotype Control

Product Information

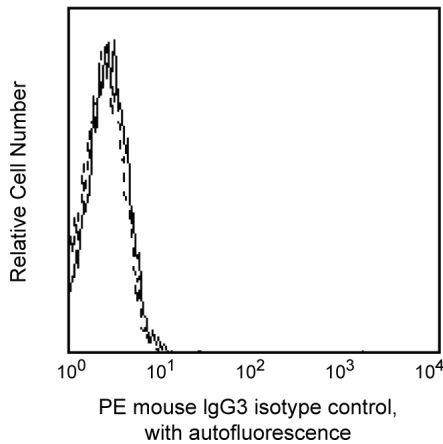
| | |
|------------------|---|
| Material Number: | 556659 |
| Alternate Name: | anti-Fructosan |
| Size: | 50 tests |
| Vol. per Test: | 20 µl |
| Clone: | J606 |
| Isotype: | Mouse (BALB/c) IgG3, κ |
| Reactivity: | QC Testing: Baboon, or Rhesus, or Cynomolgus. |
| Storage Buffer: | Aqueous buffered solution containing BSA and ≤0.09% sodium azide. |

Description

Mouse IgG3 κ isotype control antibody is specific for the β-2 - 6-linked Fructosan. The transplantable plasmacytoma J606 was induced by intraperitoneal injection of mineral oils into BALB/c mice.

This reagent has been used as isotype control in immunophenotypic studies with baboon, rhesus, or cynomolgus peripheral blood cells.

This antibody is routinely tested by flow cytometric analysis. Other applications were tested at BD Biosciences Pharmingen during antibody development only or reported in the literature.



Profile of peripheral blood lymphocytes of rhesus macaque (macaca mulatta) analyzed by flow cytometry

Preparation and Storage

The monoclonal antibody was purified from tissue culture supernatant or ascites by affinity chromatography. The antibody was conjugated with R-PE under optimum conditions, and unconjugated antibody and free PE were removed by gel filtration chromatography. Store undiluted at 4° C and protected from prolonged exposure to light. Do not freeze.

Application Notes

Application

| | |
|-----------------|------------------|
| Flow cytometry | Routinely Tested |
| Isotype control | Routinely Tested |

Product Notices

1. This reagent has been pre-diluted for use at the recommended Volume per Test. We typically use 1×10^6 cells in a 100- μ l experimental sample (a test).
2. Please refer to www.bdbiosciences.com/pharmingen/protocols for technical protocols.
3. Since applications vary, each investigator should titrate the reagent to obtain optimal results.
4. For fluorochrome spectra and suitable instrument settings, please refer to our Fluorochrome Web Page at www.bdbiosciences.com/pharmingen/colors.
5. Caution: Sodium azide yields highly toxic hydrazoic acid under acidic conditions. Dilute azide compounds in running water before discarding to avoid accumulation of potentially explosive deposits in plumbing.
6. Source of all serum proteins is from USDA inspected abattoirs located in the United States.
7. An isotype control should be used at the same concentration as the antibody of interest.