

Technical Data Sheet

FITC Mouse IgG3, κ Isotype Control

Product Information

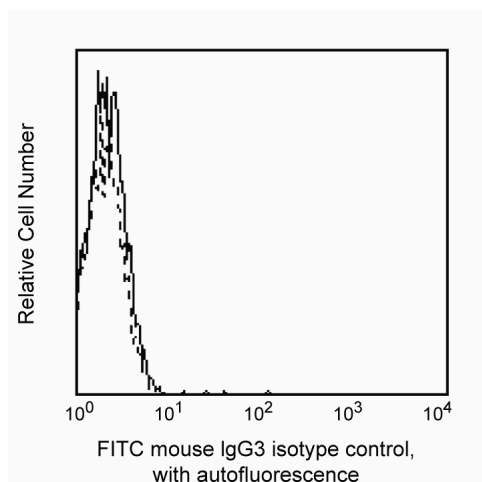
Material Number:	556658
Alternate Name:	anti-Fructosan
Size:	50 tests
Vol. per Test:	20 μ l
Clone:	J606
Isotype:	Mouse (BALB/c) IgG3, κ
Reactivity:	QC Testing: Baboon, or Rhesus, or Cynomolgus.
Storage Buffer:	Aqueous buffered solution containing BSA and \leq 0.09% sodium azide.

Description

Mouse IgG3 κ isotype control antibody is specific for the β -2 - 6-linked Fructosan. The transplantable plasmacytoma J606 was induced by intraperitoneal injection of mineral oils into BALB/c mice.

This reagent has been used as isotype control in immunophenotypic studies with baboon, rhesus, or cynomolgus peripheral blood cells.

This antibody is routinely tested by flow cytometric analysis. Other applications were tested at BD Biosciences Pharmingen during antibody development only or reported in the literature.



Profile of peripheral blood lymphocytes of rhesus macaque (macaca mulatta) analyzed by flow cytometry

Preparation and Storage

The monoclonal antibody was purified from tissue culture supernatant or ascites by affinity chromatography.

The antibody was conjugated with FITC under optimum conditions, and unreacted FITC was removed.

Store undiluted at 4° C.

Application Notes

Application

Flow cytometry	Routinely Tested
Isotype control	Routinely Tested

BD Biosciences

bdbiosciences.com

United States 877.232.8995 Canada 888.259.0187 Europe 32.53.720.550 Japan 0120.8555.90 Asia Pacific 65.6861.0633 Latin America/Caribbean 55.11.5185.9995

For country-specific contact information, visit bdbiosciences.com/how_to_order/

Conditions: The information disclosed herein is not to be construed as a recommendation to use the above product in violation of any patents. BD Biosciences will not be held responsible for patent infringement or other violations that may occur with the use of our products. Purchase does not include or carry any right to resell or transfer this product either as a stand-alone product or as a component of another product. Any use of this product other than the permitted use without the express written authorization of Becton Dickinson and Company is strictly prohibited.

For Research Use Only. Not for use in diagnostic or therapeutic procedures. Not for resale.

BD, BD Logo and all other trademarks are the property of Becton, Dickinson and Company. ©2006 BD



Product Notices

1. This reagent has been pre-diluted for use at the recommended Volume per Test. We typically use 1×10^6 cells in a 100- μ l experimental sample (a test).
2. Since applications vary, each investigator should titrate the reagent to obtain optimal results.
3. Please refer to www.bdbiosciences.com/pharmingen/protocols for technical protocols.
4. For fluorochrome spectra and suitable instrument settings, please refer to our Fluorochrome Web Page at www.bdbiosciences.com/pharmingen/colors.
5. Caution: Sodium azide yields highly toxic hydrazoic acid under acidic conditions. Dilute azide compounds in running water before discarding to avoid accumulation of potentially explosive deposits in plumbing.
6. Source of all serum proteins is from USDA inspected abattoirs located in the United States.
7. An isotype control should be used at the same concentration as the antibody of interest.