

## Technical Data Sheet

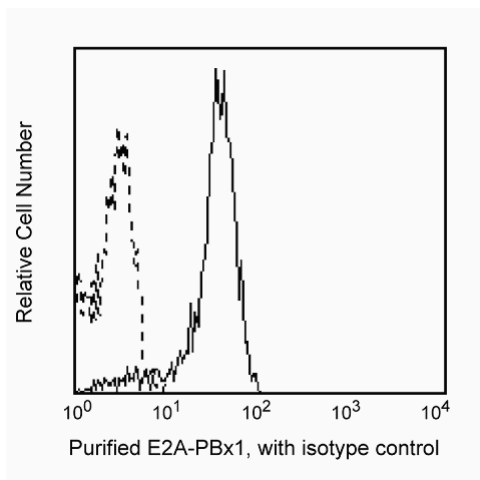
## Purified Mouse Anti-Human E2A-Pbx1

## Product Information

<b>Material Number:</b>	<b>556021</b>
<b>Size:</b>	0.1 mg
<b>Concentration:</b>	0.5 mg/ml
<b>Clone:</b>	G289-1
<b>Isotype:</b>	Mouse IgG1, $\kappa$
<b>Reactivity:</b>	QC Testing: Human
<b>Workshop:</b>	NA
<b>Storage Buffer:</b>	Aqueous buffered solution containing $\leq 0.09\%$ sodium azide.

## Description

Reacts with E2A-Pbx1, a chimeric gene product of approximately 90 kDa which is the result of t(1,19) (q23;p13.3) chromosomal translocation. Sequences of Pbx1 from chromosome 1 are juxtaposed adjacent to sequences of the E2A gene on chromosome 19. The translocation results in the transcription of a unique chimeric protein E2A-Pbx1 with an amino acid sequences not present on E2A or Pbx alone. E2A-Pbx1 is found only in cells with the t(1,19) translocation. It is detectable in the nucleus of 697 cell line (a pre-B cell line). E2A-Pbx1 is considered to be an oncoprotein, however, the oncogenic mechanism has not been fully elucidated.



Profile of permeabilized 697 (pre-B cell leukemia cell line) fixed with BD FACS Lysing solution (Cat. No. 349202) and permeabilized by FACS Permeabilizing Solution (Cat. No. 340457) analyzed on a FACScan (BDIS, San Jose, CA).

## Preparation and Storage

The monoclonal antibody was purified from tissue culture supernatant or ascites by affinity chromatography. Store undiluted at 4° C.

## Application Notes

## Application

Intracellular staining (flow cytometry)	Routinely Tested
---	------------------

## Suggested Companion Products

Catalog Number	Name	Size	Clone
555746	Purified Mouse IgG1, $\kappa$ Isotype Control	0.1 mg	MOPC-21
555988	FITC Goat Anti-Mouse IgG/IgM	0.5 mg	Polyclonal

## BD Biosciences

[www.bdbiosciences.com](http://www.bdbiosciences.com)

United States	Canada	Europe	Japan	Asia Pacific	Latin America/Caribbean
877.232.8995	888.259.0187	32.53.720.550	0120.8555.90	65.6861.0633	55.11.5185.9995

For country-specific contact information, visit [www.bdbiosciences.com/how\\_to\\_order/](http://www.bdbiosciences.com/how_to_order/)

Conditions: The information disclosed herein is not to be construed as a recommendation to use the above product in violation of any patents. BD Biosciences will not be held responsible for patent infringement or other violations that may occur with the use of our products. Purchase does not include or carry any right to resell or transfer this product either as a stand-alone product or as a component of another product. Any use of this product other than the permitted use without the express written authorization of Becton Dickinson and Company is strictly prohibited.

For Research Use Only. Not for use in diagnostic or therapeutic procedures. Not for resale.

BD, BD Logo and all other trademarks are the property of Becton, Dickinson and Company. ©2007 BD



## Product Notices

1. Since applications vary, each investigator should titrate the reagent to obtain optimal results.
2. Please refer to [www.bdbiosciences.com/pharming/en/protocols](http://www.bdbiosciences.com/pharming/en/protocols) for technical protocols.
3. Caution: Sodium azide yields highly toxic hydrazoic acid under acidic conditions. Dilute azide compounds in running water before discarding to avoid accumulation of potentially explosive deposits in plumbing.

## References

Berendes P, Hoogeveen A, van Dijk M, van Denderen J, van Ewijk W. Specific immunologic recognition of the tumor-specific E2A-PBX1 fusion-point antigen in t(1;19)-positive pre-B cells.. *Leukemia*. 1995; 9(8):1321-1327.(Biology)

Kamps MP, Look AT, Baltimore D. The human t(1;19) translocation in pre-B ALL produces multiple nuclear E2A-Pbx1 fusion proteins with differing transforming potentials. *Genes Dev*. 1991; 5(3):358-368.(Biology)

Kamps MP, Murre C, Sun XH, Baltimore D. A new homeobox gene contributes the DNA binding domain of the t(1;19) translocation protein in pre-B ALL. *Cell*. 1990; 60(4):547-557.(Biology)

Sang BC, Shi L, Dias P. Monoclonal antibodies specific to the acute lymphoblastic leukemia t(1;19)-associated E2A/pbx1 chimeric protein: characterization and diagnostic utility. *Blood*. 1997; 89(8):2909-2914.(Biology)