

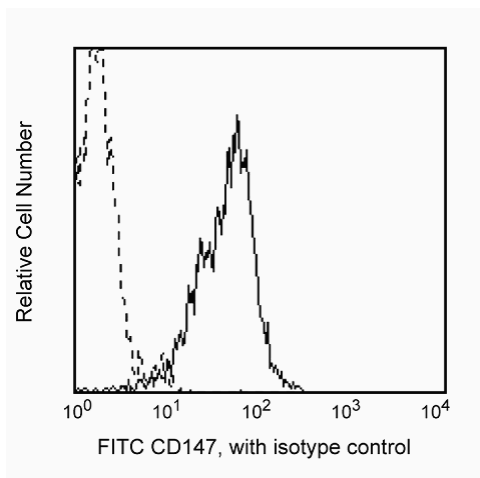
## Technical Data Sheet

**FITC Mouse Anti-Human CD147****Product Information**

<b>Material Number:</b>	555962
<b>Alternate Name:</b>	Neurothelin
<b>Size:</b>	100 tests
<b>Vol. per Test:</b>	20 µl
<b>Clone:</b>	HIM6
<b>Isotype:</b>	Mouse IgG1, κ
<b>Reactivity:</b>	QC Testing: Human
<b>Workshop:</b>	VI NL109
<b>Storage Buffer:</b>	Aqueous buffered solution containing BSA and ≤0.09% sodium azide.

**Description**

Reacts with neurothelin, a transmembrane glycoprotein (30-50 kDa) of the immunoglobulin super-gene family. Neurothelin, a blood-brain barrier-specific molecule, was clustered as CD147 in the VIth Human Leukocyte Differentiation Antigen (HLDA) workshop. It bears homology with mouse gp42 or basigin, human "M6" or "EMPRIN", rat OX-47 or CD-9, and avian HT7 or 5A11. Neurothelin is a molecule which is broadly expressed on cells of hematopoietic and non-hematopoietic origin. Its expression on specific cell types may be regulated by cytokines. CD147 plays a role in embryonal blood-brain barrier development and a role in integrin-mediated adhesion in brain endothelia.



Profile of peripheral blood lymphocytes analyzed by flow cytometry.

**Preparation and Storage**

The monoclonal antibody was purified from tissue culture supernatant or ascites by affinity chromatography.

The antibody was conjugated with FITC under optimum conditions, and unreacted FITC was removed.

Store undiluted at 4° C and protected from prolonged exposure to light. Do not freeze.

**Application Notes****Application**

Flow cytometry

Routinely Tested

**Suggested Companion Products**

Catalog Number	Name	Size	Clone
555748	FITC Mouse IgG1, κ Isotype Control	100 tests	MOPC-21

**BD Biosciences**

www.bdbiosciences.com

United States 877.232.8995 Canada 888.259.0187 Europe 32.53.720.550 Japan 0120.8555.90 Asia Pacific 65.6861.0633 Latin America/Caribbean 55.11.5185.9995

For country-specific contact information, visit [www.bdbiosciences.com/how\\_to\\_order/](http://www.bdbiosciences.com/how_to_order/)

Conditions: The information disclosed herein is not to be construed as a recommendation to use the above product in violation of any patents. BD Biosciences will not be held responsible for patent infringement or other violations that may occur with the use of our products. Purchase does not include or carry any right to resell or transfer this product either as a stand-alone product or as a component of another product. Any use of this product other than the permitted use without the express written authorization of Becton Dickinson and Company is strictly prohibited.

For Research Use Only. Not for use in diagnostic or therapeutic procedures. Not for resale.

BD, BD Logo and all other trademarks are the property of Becton, Dickinson and Company. ©2007 BD



## Product Notices

1. This reagent has been pre-diluted for use at the recommended Volume per Test. We typically use  $1 \times 10^6$  cells in a 100- $\mu$ l experimental sample (a test).
2. Since applications vary, each investigator should titrate the reagent to obtain optimal results.
3. Please refer to [www.bdbiosciences.com/pharming/en/protocols](http://www.bdbiosciences.com/pharming/en/protocols) for technical protocols.
4. Caution: Sodium azide yields highly toxic hydrazoic acid under acidic conditions. Dilute azide compounds in running water before discarding to avoid accumulation of potentially explosive deposits in plumbing.
5. Source of all serum proteins is from USDA inspected abattoirs located in the United States.

## References

- Fadool JM, Linser PJ. Evidence for the formation of multimeric forms of the 5A11/HT7 antigen. *Biochem Biophys Res Commun.* 1996; 229(1):280-286.(Biology)
- Ikeda E, Flamme I, Risau W. Developing brain cells produce factors capable of inducing the HT7 antigen, a blood-brain barrier-specific molecule, in chick endothelial cells. *Neurosci Lett.* 1996; 209(3):149-152.(Biology)
- Schuster VL, Lu R, Kanai N, Bao Y, Rosenberg S, Prié D, Ronco P, Jennings ML. Cloning of the rabbit homologue of mouse 'basigin' and rat 'OX-47': kidney cell type-specific expression, and regulation in collecting duct cells. *Biochim Biophys Acta.* 1996; 1311(1):13-19.(Biology)
- Stockinger H, Ebel T, Hansmann, et al.. EC/18/776 Neurothelin/Basigin/M6/EMMPRIN workshop panel report.. In: Kishimoto T, Kikutani H, von dem Borne AEGK, ed. *Leukocyte Typing VI: White Cell Differentiation Antigens*. New York: Garland Publishing Inc; 1997.(Biology)
- Sudou A, Ozawa M, Muramatsu T. Lewis X structure increases cell substratum adhesion in L cells. *J Biochem (Tokyo).* 1995; 117(2):271-275.(Biology)