

Technical Data Sheet

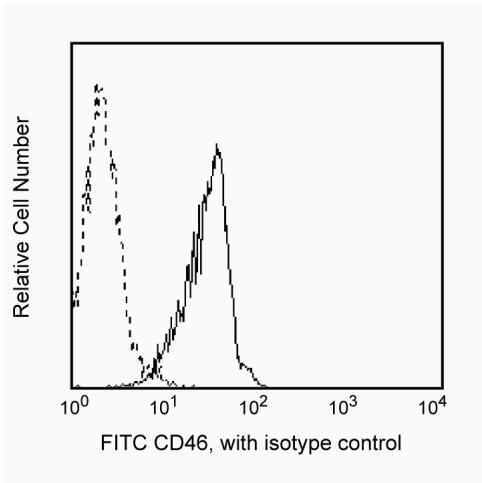
FITC Mouse Anti-Human CD46

Product Information

Material Number:	555949
Alternate Name:	MCP
Size:	100 tests
Vol. per Test:	20 µl
Clone:	E4.3
Isotype:	Mouse IgG2a, κ
Reactivity:	QC Testing: Human
Workshop:	IV N24
Storage Buffer:	Aqueous buffered solution containing BSA and ≤0.09% sodium azide.

Description

Reacts with membrane cofactor protein (MCP), a type I membrane glycoprotein composed of two non-disulfide linked α (66 kDa) and β(56 kDa) chains expressed on lymphocytes, monocytes and granulocytes. It is not expressed on erythrocytes or platelets. There are four isoforms of the dimer which function as complement regulatory factors. CD46 promotes the enzymatic degradation of activated C3b and/or C4b deposited on host cells. It also serves as the measles virus receptor.



Profile of peripheral blood lymphocytes analyzed by flow cytometry.

Preparation and Storage

The monoclonal antibody was purified from tissue culture supernatant or ascites by affinity chromatography. The antibody was conjugated with FITC under optimum conditions, and unreacted FITC was removed. Store undiluted at 4° C and protected from prolonged exposure to light. Do not freeze.

Application Notes

Application

Flow cytometry	Routinely Tested
----------------	------------------

Suggested Companion Products

Catalog Number	Name	Size	Clone
555573	FITC Mouse IgG2a, κ Isotype Control	100 tests	G155-178

BD Biosciences

www.bdbiosciences.com

United States	Canada	Europe	Japan	Asia Pacific	Latin America/Caribbean
877.232.8995	888.259.0187	32.53.720.550	0120.8555.90	65.6861.0633	55.11.5185.9995

For country-specific contact information, visit www.bdbiosciences.com/how_to_order/

Conditions: The information disclosed herein is not to be construed as a recommendation to use the above product in violation of any patents. BD Biosciences will not be held responsible for patent infringement or other violations that may occur with the use of our products. Purchase does not include or carry any right to resell or transfer this product either as a stand-alone product or as a component of another product. Any use of this product other than the permitted use without the express written authorization of Becton Dickinson and Company is strictly prohibited.

For Research Use Only. Not for use in diagnostic or therapeutic procedures. Not for resale.

BD, BD Logo and all other trademarks are the property of Becton, Dickinson and Company. ©2007 BD



Product Notices

1. This reagent has been pre-diluted for use at the recommended Volume per Test. We typically use 1×10^6 cells in a 100- μ l experimental sample (a test).
2. Since applications vary, each investigator should titrate the reagent to obtain optimal results.
3. Please refer to www.bdbiosciences.com/pharming/en/protocols for technical protocols.
4. Caution: Sodium azide yields highly toxic hydrazoic acid under acidic conditions. Dilute azide compounds in running water before discarding to avoid accumulation of potentially explosive deposits in plumbing.
5. Source of all serum proteins is from USDA inspected abattoirs located in the United States.

References

Knapp W, Dorken B, Rieber EP, et al, ed. *Leucocyte Typing IV*. New York: Oxford University Press; 1989.(Clone-specific)
Schlossman S, Boumell L, et al, ed. *Leucocyte Typing V*. New York: Oxford University Press; 1995.(Biology)
Kurita M, Yanagi Y, Hara T, Nagasawa S, Matsumoto M, Seya T. Human lymphocytes are more susceptible to measles virus than granulocytes, which is attributable to the phenotypic differences of their membrane cofactor protein (CD46). *Immunol Lett*. 1995; 48(2):91-95.(Biology)