

Technical Data Sheet

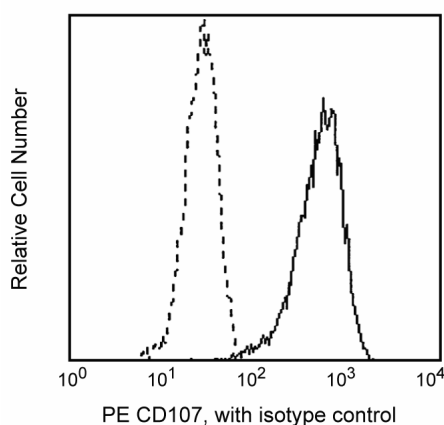
PE Mouse Anti-Human CD107a

Product Information

Material Number:	555801
Alternate Name:	LAMP1; LAMP-1; LAMPA; LGP120
Size:	100 tests
Vol. per Test:	20 µl
Clone:	H4A3
Isotype:	Mouse IgG1, κ
Reactivity:	QC Testing: Human
Workshop:	V P008
Storage Buffer:	Aqueous buffered solution containing BSA and ≤0.09% sodium azide.

Description

The H4A3 monoclonal antibody specifically binds to the heavily glycosylated 110 kDa Lysosomal-associated membrane protein 1, LAMP-1. LAMP-1 is a widely expressed intracellular antigen. It is also expressed on the surface of activated platelets, PHA-activated lymphocytes, cytotoxic T cells and NK cells, and some tumor cell lines, including U937 and KG1a. LAMP-1 has been shown to be a ligand for E-selectin-mediated cell adhesion. LAMP-1 and LAMP-2 (CD107b) are carriers for poly-N-acetyllactosamines and are able to display sialyl Le^x termini.



Profile of activated platelets analyzed on a FACScan
(BDIS, San Jose, CA)

Preparation and Storage

The monoclonal antibody was purified from tissue culture supernatant or ascites by affinity chromatography.

The antibody was conjugated with R-PE under optimum conditions, and unconjugated antibody and free PE were removed.

Store undiluted at 4°C and protected from prolonged exposure to light. Do not freeze.

Application Notes

Application

Intracellular staining (flow cytometry)	Routinely Tested
---	------------------

Recommended Assay Procedure:

We routinely test this antibody on the fixed and permeabilized Jurkat cells by flow cytometry with Cytofix/Cytoperm (Cat. No. 554714) for fixation and permeabilization.

Suggested Companion Products

Catalog Number	Name	Size	Clone
554714	BD Cytofix/Cytoperm™ Fixation/Permeabilization Kit	250 tests	(none)
555749	PE Mouse IgG1, κ Isotype Control	100 tests	MOPC-21

Product Notices

BD Biosciences

bdbiosciences.com

United States	Canada	Europe	Japan	Asia Pacific	Latin America/Caribbean
877.232.8995	888.268.5430	32.53.720.550	0120.8555.90	65.6861.0633	0800.771.7157

For country-specific contact information, visit bdbiosciences.com/how_to_order/

Conditions: The information disclosed herein is not to be construed as a recommendation to use the above product in violation of any patents. BD Biosciences will not be held responsible for patent infringement or other violations that may occur with the use of our products. Purchase does not include or carry any right to resell or transfer this product either as a stand-alone product or as a component of another product. Any use of this product other than the permitted use without the express written authorization of Becton Dickinson and Company is strictly prohibited.

For Research Use Only. Not for use in diagnostic or therapeutic procedures. Not for resale.

BD, BD Logo and all other trademarks are the property of Becton, Dickinson and Company. ©2011 BD



1. This reagent has been pre-diluted for use at the recommended Volume per Test. We typically use 1×10^6 cells in a 100- μ l experimental sample (a test).
2. Since applications vary, each investigator should titrate the reagent to obtain optimal results.
3. Please refer to www.bdbiosciences.com/pharmingen/protocols for technical protocols.
4. For fluorochrome spectra and suitable instrument settings, please refer to our Fluorochrome Web Page at www.bdbiosciences.com/colors.
5. Caution: Sodium azide yields highly toxic hydrazoic acid under acidic conditions. Dilute azide compounds in running water before discarding to avoid accumulation of potentially explosive deposits in plumbing.
6. Source of all serum proteins is from USDA inspected abattoirs located in the United States.

References

- Chen JW, Cha Y, Yuksel KU, Gracy RW, August JT. Isolation and sequencing of a cDNA clone encoding lysosomal membrane glycoprotein mouse LAMP-1. Sequence similarity to proteins bearing onco-differentiation antigens. *J Biol Chem.* 1988; 263(18):8754-8758. (Biology)
- Febbraio M, Silverstein RL. Identification and characterization of LAMP-1 as an activation-dependent platelet surface glycoprotein. *J Biol Chem.* 1990; 265(30):18531-18537. (Biology)
- Sawada R, Lowe JB, Fukuda M. E-selectin-dependent adhesion efficiency of colonic carcinoma cells is increased by genetic manipulation of their cell surface lysosomal membrane glycoprotein-1 expression levels. *J Biol Chem.* 1993; 268(17):12675-12681. (Biology)
- Schlossman SF, Boumsell L, Gilks W, et al, ed. *Leukocyte Typing V: White Cell Differentiation Antigens.* New York: Oxford University Press; 1995. (Clone-specific)