

Technical Data Sheet

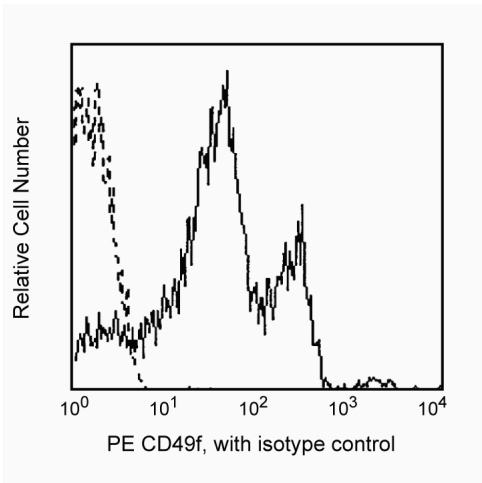
PE Rat Anti-Human CD49f

Product Information

Material Number:	555736
Alternate Name:	Integrin α6 chain
Size:	100 tests
Vol. per Test:	20 µl
Clone:	GoH3
Immunogen:	Mouse mammary tumor cells
Isotype:	Rat (SD) IgG2a, κ
Reactivity:	QC Testing: Human Tested in Development: Dog, Mouse, Pig
Workshop:	IV P55
Storage Buffer:	Aqueous buffered solution containing BSA and ≤0.09% sodium azide.

Description

Reacts with CD49f or integrin α6 chain, a 150 kDa transmembrane protein, member of extracellular matrix and cell adhesion receptor family. α6 associates with integrin β1 chain (CD29) to form VLA-6 and with integrin β4 chain (CD104) to form the α6 β4 complex, also known as the laminin and kalinin receptor. CD49f is expressed mainly on T cells, monocytes, platelets, epithelial and endothelial cells, perineural cells and trophoblasts of placenta. GoH3 recognizes an extracellular epitope of integrin α6 on human, mouse and bovine cells. GoH3 has been reported to block the binding of integrin α6 to laminin P1 and E8 fragments.



Profile of peripheral blood lymphocytes analyzed on a FACScan (BDIS, San Jose, CA)

Preparation and Storage

The monoclonal antibody was purified from tissue culture supernatant or ascites by affinity chromatography. The antibody was conjugated with R-PE under optimum conditions, and unconjugated antibody and free PE were removed. Store undiluted at 4° C and protected from prolonged exposure to light. Do not freeze.

Application Notes

Application

Flow cytometry	Routinely Tested
----------------	------------------

Suggested Companion Products

Catalog Number	Name	Size	Clone
555844	PE Rat IgG2a, κ Isotype Control	100 tests	R35-95

BD Biosciences

www.bdbiosciences.com

United States	Canada	Europe	Japan	Asia Pacific	Latin America/Caribbean
877.232.8995	888.259.0187	32.53.720.550	0120.8555.90	65.6861.0633	55.11.5185.9995

For country-specific contact information, visit www.bdbiosciences.com/how_to_order/

Conditions: The information disclosed herein is not to be construed as a recommendation to use the above product in violation of any patents. BD Biosciences will not be held responsible for patent infringement or other violations that may occur with the use of our products. Purchase does not include or carry any right to resell or transfer this product either as a stand-alone product or as a component of another product. Any use of this product other than the permitted use without the express written authorization of Becton Dickinson and Company is strictly prohibited.

For Research Use Only. Not for use in diagnostic or therapeutic procedures. Not for resale.

BD, BD Logo and all other trademarks are the property of Becton, Dickinson and Company. ©2007 BD



Product Notices

1. This reagent has been pre-diluted for use at the recommended Volume per Test. We typically use 1 X 10⁶ cells in a 100- μ l experimental sample (a test).
2. Since applications vary, each investigator should titrate the reagent to obtain optimal results.
3. Please refer to www.bdbiosciences.com/pharmingen/protocols for technical protocols.
4. For fluorochrome spectra and suitable instrument settings, please refer to our Fluorochrome Web Page at www.bdbiosciences.com/pharmingen/colors.
5. Caution: Sodium azide yields highly toxic hydrazoic acid under acidic conditions. Dilute azide compounds in running water before discarding to avoid accumulation of potentially explosive deposits in plumbing.
6. Source of all serum proteins is from USDA inspected abattoirs located in the United States.

References

- Knapp W, Dorken B, Rieber EP, et al, ed. *Leucocyte Typing IV*. New York: Oxford University Press; 1989.(Clone-specific)
- Aumailley M, Timpl R, Sonnenberg A. Antibody to integrin alpha 6 subunit specifically inhibits cell-binding to laminin fragment 8. *Exp Cell Res*. 1990; 188(1):55-60. (Biology)
- Sonnenberg A, Daams H, Van der Valk MA, Hilken J, Hilgers J. Development of mouse mammary gland: identification of stages in differentiation of luminal and myoepithelial cells using monoclonal antibodies and polyvalent antiserum against keratin. *J Histochem Cytochem*. 1986; 34(8):1037-1046.(Immunogen)