

## Technical Data Sheet

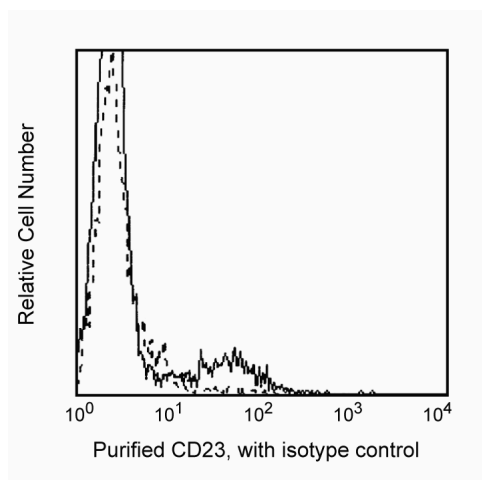
## Purified Mouse Anti-Human CD23

## Product Information

Material Number:	555708
Size:	0.5 mg
Concentration:	0.5 mg/ml
Clone:	M-L233
Isotype:	Mouse IgG1, $\kappa$
Reactivity:	QC Testing: Human
Workshop:	V CD23.15
Storage Buffer:	Aqueous buffered solution containing $\leq 0.09\%$ sodium azide.

## Description

The M-L233 antibody reacts with the low affinity receptor for human IgE, Fc $\epsilon$ R1/CD23. CD23 is a type II membrane protein which can be expressed by B cells, monocytes, macrophages, eosinophils, platelets, and dendritic cells. CD23 can mediate IgE-dependent cytotoxicity and phagocytosis by macrophages and eosinophils. Soluble CD23 (sCD23) can be released by CD23+ cells as a result of proteolytic cleavage of membrane CD23. Larger fragments of sCD23 (e.g., 37-25 kDa) retain their IgE-binding capacity whereas smaller fragments (i.e.,  $\leq 12$  kDa) do not. Soluble CD23 may have immunoregulatory effects on the growth and differentiation of B cells and other cell types.



Profile of peripheral blood lymphocytes analyzed on a FACScan (BDIS, San Jose, CA)

## Preparation and Storage

The monoclonal antibody was purified from tissue culture supernatant or ascites by affinity chromatography.

Store undiluted at 4°C.

## Application Notes

## Application

Flow cytometry	Routinely Tested
Immunohistochemistry-frozen	Tested During Development
Western blot	Reported

## Recommended Assay Procedure:

The biotinylated M-L233 antibody is useful as a detector antibody in ELISA for measuring soluble CD23 (sCD23) protein levels in combination with clone M-L234 as the capture antibody. This antibody has been reported for Western Blot application.

## BD Biosciences

bdbiosciences.com

United States	Canada	Europe	Japan	Asia Pacific	Latin America/Caribbean
877.232.8995	888.259.0187	32.53.720.550	0120.8555.90	65.6861.0633	55.11.5185.9995

For country-specific contact information, visit [bdbiosciences.com/how\\_to\\_order/](http://bdbiosciences.com/how_to_order/)

Conditions: The information disclosed herein is not to be construed as a recommendation to use the above product in violation of any patents. BD Biosciences will not be held responsible for patent infringement or other violations that may occur with the use of our products. Purchase does not include or carry any right to resell or transfer this product either as a stand-alone product or as a component of another product. Any use of this product other than the permitted use without the express written authorization of Becton Dickinson and Company is strictly prohibited.

For Research Use Only. Not for use in diagnostic or therapeutic procedures. Not for resale.

BD, BD Logo and all other trademarks are the property of Becton, Dickinson and Company. ©2008 BD



## Suggested Companion Products

<u>Catalog Number</u>	<u>Name</u>	<u>Size</u>	<u>Clone</u>
555746	Purified Mouse IgG1, $\kappa$ Isotype Control	0.1 mg	MOPC-21
555988	FITC Goat Anti-Mouse IgG/IgM	0.5 mg	Polyclonal

## Product Notices

1. Since applications vary, each investigator should titrate the reagent to obtain optimal results.
2. Please refer to [www.bdbiosciences.com/pharmingen/protocols](http://www.bdbiosciences.com/pharmingen/protocols) for technical protocols.
3. Caution: Sodium azide yields highly toxic hydrazoic acid under acidic conditions. Dilute azide compounds in running water before discarding to avoid accumulation of potentially explosive deposits in plumbing.

## References

- Barclay NA, Brown MH, Birkeland ML, et al, ed. *The Leukocyte Antigen FactsBook*. San Diego, CA: Academic Press; 1997.(Biology)
- Schlossman S, Boumell L, et al, ed. *Leucocyte Typing V*. New York: Oxford University Press; 1995.(Clone-specific)
- Belleau JT, Gandhi RK, McPherson HM, Lew DB. Research upregulation of CD23 (Fc $\epsilon$ RII) expression in human airway smooth muscle cells (huASMC) in response to IL-4, GM-CSF, and IL-4/GM-CSF. Available: <http://www.clinicalmolecularallergy.com/content/3/1/6> 2008, April 28.(Clone-specific)
- Delespesse G, Hofstetter H, Sarfati M. Low-affinity receptor for IgE (FcERII, CD23) and its soluble fragments. *Int Arch Allergy Immunol*. 1989; 90(1):41-44. (Biology)
- Gordon J, Millsum MJ, Flores-Romo L, Gillis S. Regulation of resting and cycling human B lymphocytes via surface IgM and the accessory molecules interleukin-4, CD23 and CD40. *Immunology*. 1989; 68(4):526-531.(Biology)
- Saeland S, Duvert V, Moreau I, Banchereau J. Human B cell precursors proliferate and express CD23 after CD40 ligation. *J Exp Med*. 1993; 178(1):113-120. (Biology)