

Technical Data Sheet

FITC Mouse Anti-Human CD69

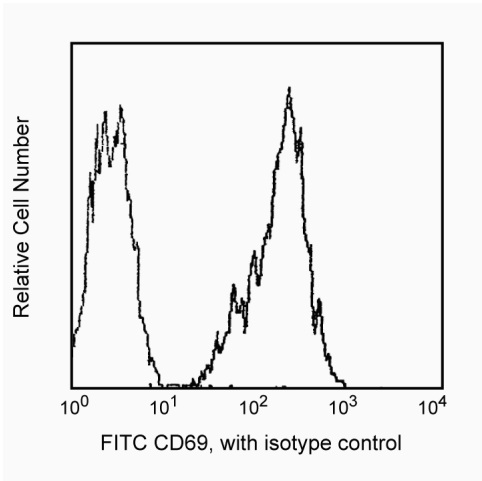
Product Information

Material Number:	555530
Alternate Name:	Very Early Activation Antigen
Size:	100 tests
Vol. per Test:	20 µl
Clone:	FN50
Isotype:	Mouse IgG1, κ
Reactivity:	QC Testing: Human
Workshop:	IV A091
Storage Buffer:	Aqueous buffered solution containing BSA and ≤0.09% sodium azide.

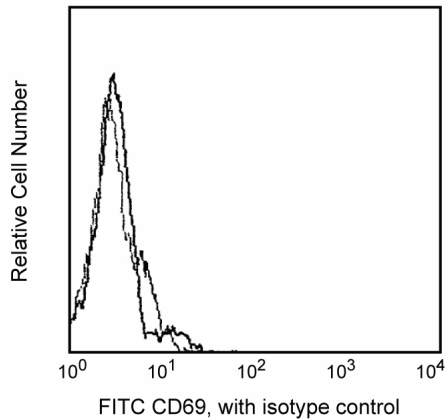
Description

Reacts with a 28/34 kDa dimeric glycoprotein expressed early during activation of lymphocytes and monocytes. FN50 monoclonal antibody labels NK cells and most lymphocytes of the follicular mantle and perifollicular/interfollicular zone as well as intragerminal center T cells of lymph nodes and tonsils.

This antibody is routinely tested by flow cytometric analysis. Other applications were tested at BD Biosciences Pharmingen during antibody development only or reported in the literature.



Profile of PHA stimulated 24-hour lymphocytes analyzed on a FACScan (BDIS, San Jose, CA)



Profile of resting lymphocytes analyzed on a FACScan (BDIS, San Jose, CA)

Preparation and Storage

The monoclonal antibody was purified from tissue culture supernatant or ascites by affinity chromatography. The antibody was conjugated with FITC under optimum conditions, and unreacted FITC was removed. Store undiluted at 4° C and protected from prolonged exposure to light. Do not freeze.

Application Notes

Application

Flow cytometry	Routinely Tested
----------------	------------------

Recommended Assay Procedure:

BD Biosciences Pharmingen will not be responsible for violations or patent infringements which may occur with the use of our products. US Patent Nos. 5,445,939, 5,656,446, 5,843,689; European Patent No. 319,543; Canadian Patent No. 1,296,622; Australian Patent No. 615,880; and Japanese Patent No. 2,769,156.

BD Biosciences

bdbiosciences.com				
United States	Canada	Europe	Japan	Asia Pacific
877.232.8995	888.259.0187	32.53.720.550	0120.8555.90	65.6861.0633
Latin America/Caribbean				
55.11.5185.9995				
For country-specific contact information, visit bdbiosciences.com/how_to_order/				

Conditions: The information disclosed herein is not to be construed as a recommendation to use the above product in violation of any patents. BD Biosciences will not be held responsible for patent infringement or other violations that may occur with the use of our products. Purchase does not include or carry any right to resell or transfer this product either as a stand-alone product or as a component of another product. Any use of this product other than the permitted use without the express written authorization of Becton Dickinson and Company is strictly prohibited.

For Research Use Only. Not for use in diagnostic or therapeutic procedures. Not for resale.

BD, BD Logo and all other trademarks are the property of Becton, Dickinson and Company. ©2006 BD



Suggested Companion Products

Catalog Number	Name	Size	Clone
555748	FITC Mouse IgG1, κ Isotype Control	100 tests	MOPC-21

Product Notices

1. This reagent has been pre-diluted for use at the recommended Volume per Test. We typically use 1 X 10⁶ cells in a 100- μ l experimental sample (a test).
2. Since applications vary, each investigator should titrate the reagent to obtain optimal results.
3. Please refer to www.bdbiosciences.com/pharming/en/protocols for technical protocols.
4. Caution: Sodium azide yields highly toxic hydrazoic acid under acidic conditions. Dilute azide compounds in running water before discarding to avoid accumulation of potentially explosive deposits in plumbing.
5. Source of all serum proteins is from USDA inspected abattoirs located in the United States.

References

Knapp W, Dorken B, et al, ed. *Leucocyte Typing IV*. New York: Oxford University Press; 1989.(Clone-specific)
Schlossman S, Boumell L, et al, ed. *Leucocyte Typing V*. New York: Oxford University Press; 1995.(Biology)