

## Technical Data Sheet

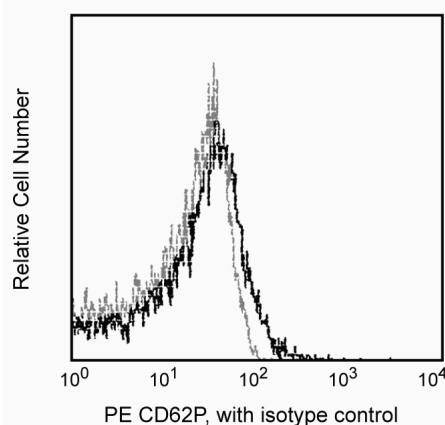
## PE Mouse Anti-Human CD62P

## Product Information

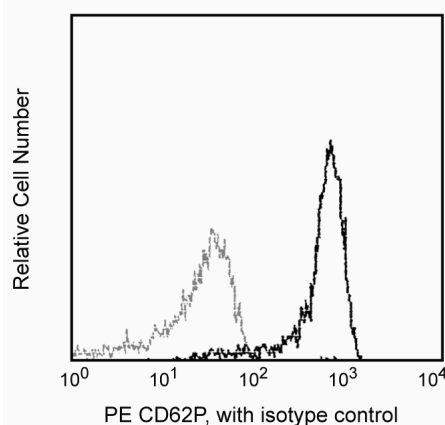
<b>Material Number:</b>	555524
<b>Alternate Name:</b>	P-Selectin; GMP-140; PADGEM
<b>Size:</b>	100 tests
<b>Vol. per Test:</b>	20 µl
<b>Clone:</b>	AK-4
<b>Isotype:</b>	Mouse IgG1, κ
<b>Reactivity:</b>	QC Testing: Human
<b>Workshop:</b>	VI P-44
<b>Storage Buffer:</b>	Aqueous buffered solution containing BSA and ≤0.09% sodium azide.

## Description

Reacts with the 140 kDa membrane glycoprotein, P-Selectin, formerly known as platelet activation-dependent granule membrane protein (PADGEM), or GMP-140. P-Selectin is stored in the α-granules of platelets and the Weibel-Palade bodies of endothelial cells, and is rapidly transported to the plasma membrane upon activation. P-Selectin is thought to mediate the initial adhesive interactions of neutrophils and monocytes with endothelium in inflammatory responses, and of activated platelets to neutrophils and monocytes in hemostasis.



Profile of resting platelets analyzed on a FACScan  
(BDIS, San Jose, CA)



Profile of thrombin-activated platelets analyzed on a  
FACScan (BDIS, San Jose, CA)

## Preparation and Storage

Store undiluted at 4°C and protected from prolonged exposure to light. Do not freeze.

The monoclonal antibody was purified from tissue culture supernatant or ascites by affinity chromatography.

The antibody was conjugated with R-PE under optimum conditions, and unconjugated antibody and free PE were removed.

## Application Notes

## Application

Flow cytometry	Routinely Tested
----------------	------------------

## Suggested Companion Products

Catalog Number	Name	Size	Clone
555749	PE Mouse IgG1, κ Isotype Control	100 tests	MOPC-21

## Product Notices

1. This reagent has been pre-diluted for use at the recommended Volume per Test. We typically use  $1 \times 10^6$  cells in a 100-µl experimental sample (a test).
2. For fluorochrome spectra and suitable instrument settings, please refer to our Multicolor Flow Cytometry web page at [www.bdbiosciences.com/colors](http://www.bdbiosciences.com/colors).
3. Caution: Sodium azide yields highly toxic hydrazoic acid under acidic conditions. Dilute azide compounds in running water before discarding to avoid accumulation of potentially explosive deposits in plumbing.

## BD Biosciences

[bdbiosciences.com](http://bdbiosciences.com)

United States	Canada	Europe	Japan	Asia Pacific	Latin America/Caribbean
877.232.8995	800.979.9408	32.53.720.550	0120.8555.90	65.6861.0633	55.11.5185.9995

For country contact information, visit [bdbiosciences.com/contact](http://bdbiosciences.com/contact)

Conditions: The information disclosed herein is not to be construed as a recommendation to use the above product in violation of any patents. BD Biosciences will not be held responsible for patent infringement or other violations that may occur with the use of our products. Purchase does not include or carry any right to resell or transfer this product either as a stand-alone product or as a component of another product. Any use of this product other than the permitted use without the express written authorization of Becton, Dickinson and Company is strictly prohibited.

For Research Use Only. Not for use in diagnostic or therapeutic procedures. Not for resale.

Unless otherwise noted, BD, BD Logo and all other trademarks are property of Becton, Dickinson and Company. © 2011 BD



4. Source of all serum proteins is from USDA inspected abattoirs located in the United States.
5. Please refer to [www.bdbiosciences.com/pharming/protocols](http://www.bdbiosciences.com/pharming/protocols) for technical protocols.

## References

Johnson-Tidey RR, McGregor JL, Taylor PR, Poston RN. Increase in the adhesion molecule P-selectin in endothelium overlying atherosclerotic plaques. Coexpression with intercellular adhesion molecule-1. *Am J Pathol.* 1994; 144(5):952-961. (Biology)

Kishimoto T, von dem Borne AEG, Goyert SM, et al., ed. *Leucocyte Typing VI: White Cell Differentiation Antigens*. London: Garland Publishing; 1997. (Clone-specific)

Lasky LA. Selectins: interpreters of cell-specific carbohydrate information during inflammation. *Science.* 1992; 258(5084):964-969. (Biology)

Schlossman SF, Boumsell L, Gilks W, et al, ed. *Leukocyte Typing V: White Cell Differentiation Antigens*. New York: Oxford University Press; 1995. (Biology)

## BD Biosciences

[bdbiosciences.com](http://bdbiosciences.com)

United States	Canada	Europe	Japan	Asia Pacific	Latin America/Caribbean
877.232.8995	800.979.9408	32.53.720.550	0120.8555.90	65.6861.0633	55.11.5185.9995

For country contact information, visit [bdbiosciences.com/contact](http://bdbiosciences.com/contact)

*Conditions: The information disclosed herein is not to be constructed as a recommendation to use the above product in violation of any patents. BD Biosciences will not be held responsible for patent infringement or other violations that may occur with the use of our products. Purchase does not include or carry any right to resell or transfer this product either as a stand-alone product or as a component of another product. Any use of this product other than the permitted use without the express written authorization of Becton, Dickinson and Company is strictly prohibited.*

*For Research Use Only. Not for use in diagnostic or therapeutic procedures. Not for resale.*

Unless otherwise noted, BD, BD Logo and all other trademarks are property of Becton, Dickinson and Company. © 2011 BD

