

Technical Data Sheet

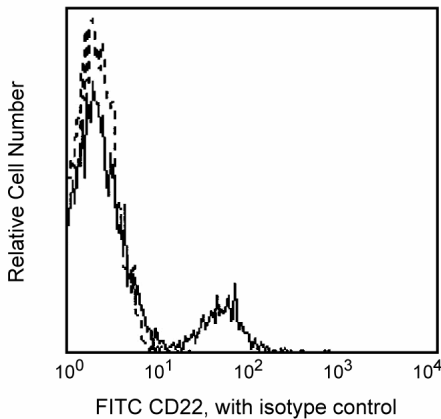
FITC Mouse Anti-Human CD22

Product Information

Material Number:	555424
Alternate Name:	BL-CAM
Size:	100 tests
Vol. per Test:	20 µl
Clone:	HIB22
Isotype:	Mouse IgG1, κ
Reactivity:	QC Testing: Human
Workshop:	V CD22.14
Storage Buffer:	Aqueous buffered solution containing BSA and ≤0.09% sodium azide.

Description

Reacts with the 130-140 kDa glycosylated type I integral membrane protein present on the surface of mature B cells. CD22 is expressed in the cytoplasm of virtually all B cells except plasma cells. CD45RO antigen on T cells and CD75 antigen on B cells have been identified as ligands for CD22. CD22 has been reported to participate in B-cell activation and also as an adhesion molecule. Although the immunobiology of this antigen has not been fully elucidated, reports indicate that ligation of CD22 induces constitutive internalization of the molecule followed by complete degradation.



Preparation and Storage

The monoclonal antibody was purified from tissue culture supernatant or ascites by affinity chromatography. The antibody was conjugated with FITC under optimum conditions, and unreacted FITC was removed. Store undiluted at 4° C and protected from prolonged exposure to light. Do not freeze.

Application Notes

Application

Flow cytometry	Routinely Tested
----------------	------------------

Suggested Companion Products

Catalog Number	Name	Size	Clone
555748	FITC Mouse IgG1, κ Isotype Control	100 tests	MOPC-21

BD Biosciences

www.bdbiosciences.com

United States	Canada	Europe	Japan	Asia Pacific	Latin America/Caribbean
877.232.8995	888.259.0187	32.53.720.550	0120.8555.90	65.6861.0633	55.11.5185.9995

For country-specific contact information, visit www.bdbiosciences.com/how_to_order/

Conditions: The information disclosed herein is not to be construed as a recommendation to use the above product in violation of any patents. BD Biosciences will not be held responsible for patent infringement or other violations that may occur with the use of our products. Purchase does not include or carry any right to resell or transfer this product either as a stand-alone product or as a component of another product. Any use of this product other than the permitted use without the express written authorization of Becton Dickinson and Company is strictly prohibited.

For Research Use Only. Not for use in diagnostic or therapeutic procedures. Not for resale.

BD, BD Logo and all other trademarks are the property of Becton, Dickinson and Company. ©2007 BD



Product Notices

1. This reagent has been pre-diluted for use at the recommended Volume per Test. We typically use 1 X 10⁶ cells in a 100-μl experimental sample (a test).
2. Since applications vary, each investigator should titrate the reagent to obtain optimal results.
3. Please refer to www.bdbiosciences.com/pharming/en/protocols for technical protocols.
4. Caution: Sodium azide yields highly toxic hydrazoic acid under acidic conditions. Dilute azide compounds in running water before discarding to avoid accumulation of potentially explosive deposits in plumbing.
5. Source of all serum proteins is from USDA inspected abattoirs located in the United States.

References

Schlossman SF, Boumsell L, Gilks W, et al, ed. *Leukocyte Typing V: White Cell Differentiation Antigens*. New York: Oxford University Press; 1995.(Clone-specific)
Clark EA. CD22, a B cell-specific receptor, mediates adhesion and signal transduction. *J Immunol.* 1993; 150(11):4715-4718.(Biology)
Shan D, Press OW. Constitutive endocytosis and degradation of CD22 by human B cells. *J Immunol.* 1995; 154(9):4466-4475.(Biology)
Stamenkovic I, Sgroi D, Aruffo A, Sy MS, Anderson T. The B lymphocyte adhesion molecule CD22 interacts with leukocyte common antigen CD45RO on T cells and alpha 2-6 sialyltransferase, CD75, on B cells. *Cell.* 1991; 66(6):1133-1144.(Biology)