

## Technical Data Sheet

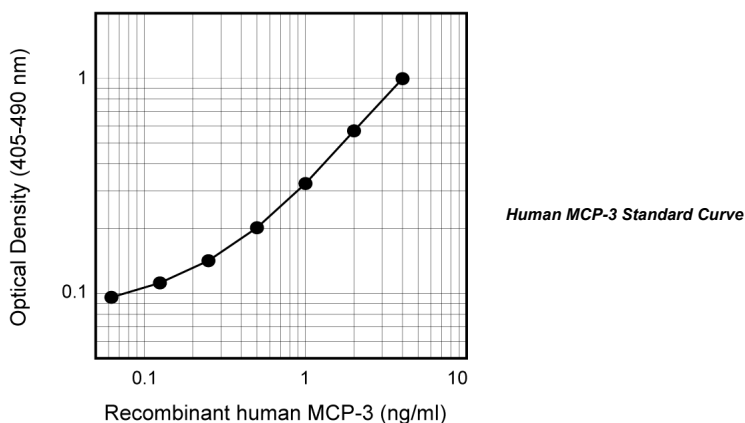
## Biotin Mouse Anti-Human MCP-3

## Product Information

Material Number:	555034
Size:	0.5 mg
Concentration:	0.5 mg/ml
Clone:	6H5
Immunogen:	Recombinant Human MCP-3
Isotype:	Mouse IgG1, $\kappa$
Reactivity:	QC Testing: Human
Storage Buffer:	Aqueous buffered solution containing $\leq 0.09\%$ sodium azide.

## Description

This antibody reacts with human monocyte chemotactic protein-3 (MCP-3). The immunogen used to produce the 6H5 hybridoma was recombinant MCP-3.



## Preparation and Storage

Store undiluted at 4° C and protected from prolonged exposure to light. Do not freeze.

The monoclonal antibody was purified from tissue culture supernatant or ascites by affinity chromatography.

The antibody was conjugated with biotin under optimum conditions, and unreacted biotin was removed.

## Application Notes

## Application

ELISA Detection

Routinely Tested

## Recommended Assay Procedure:

ELISA Detection: The biotinylated 6H5 antibody (Cat. No. 555034) is useful as a detection antibody in a sandwich ELISA for measuring human MCP-3 protein levels. The biotinylated 6H5 antibody can be paired with the purified 9H11 antibody (Cat. No. 551228) as the capture antibody, with recombinant human MCP-3 (Cat. No. 554629) as the standard. The biotinylated 6H5 antibody should be titrated (3.0 - 7.0  $\mu$ g/ml) to determine optimal concentration for ELISA detection. To obtain linear standard curves, doubling dilutions of human MCP-3 ranging from ~100,000 to 65 pg/ml are recommended for inclusion in each ELISA plate. For specific methodology, please visit the protocols section or chapter on ELISA in the Immune Function Handbook, both of which are posted on our web site, [www.bdbiosciences.com](http://www.bdbiosciences.com).

*Note 1:* This ELISA pair shows no cross-reactivity with any of the cytokines tested (human IL-1 $\alpha$ , IL-1 $\beta$ , IL-2, IL-3, IL-4, IL-5, IL-6, IL-7, IL-8, IL-9, IL-10, IL-11, IL-12p70, IL-12p40, IL-13, IL-15, G-CSF, GM-CSF, IFN- $\gamma$ , lymphotactin, MCP-1, MCP-2, MCP-4, MIP-1 $\alpha$ , MIP-1 $\beta$ , NT-3, PDGF-AA, sCD23, SCF, TNF, LT- $\alpha$ , VEGF).

## BD Biosciences

[www.bdbiosciences.com](http://www.bdbiosciences.com)

United States	Canada	Europe	Japan	Asia Pacific	Latin America/Caribbean
877.232.8995	888.259.0187	32.53.720.550	0120.8555.90	65.6861.0633	55.11.5185.9995

For country-specific contact information, visit [www.bdbiosciences.com/how\\_to\\_order/](http://www.bdbiosciences.com/how_to_order/)

*Conditions:* The information disclosed herein is not to be construed as a recommendation to use the above product in violation of any patents. BD Biosciences will not be held responsible for patent infringement or other violations that may occur with the use of our products. Purchase does not include or carry any right to resell or transfer this product either as a stand-alone product or as a component of another product. Any use of this product other than the permitted use without the express written authorization of Becton Dickinson and Company is strictly prohibited.

For Research Use Only. Not for use in diagnostic or therapeutic procedures. Not for resale.

BD, BD Logo and all other trademarks are the property of Becton, Dickinson and Company. ©2007 BD



*Note 2:* This ELISA pair is recommended primarily for measuring cytokine from experimental cell culture systems. These ELISA reagents are not recommended for assaying serum or plasma samples.

### Suggested Companion Products

<u>Catalog Number</u>	<u>Name</u>	<u>Size</u>	<u>Clone</u>
551228	Purified Mouse Anti-Human MCP-3	1.0 mg	9H11
554629	Recombinant Human MCP-3	10 µg	(none)

### Product Notices

1. Since applications vary, each investigator should titrate the reagent to obtain optimal results.
2. Please refer to [www.bdbiosciences.com/pharmingen/protocols](http://www.bdbiosciences.com/pharmingen/protocols) for technical protocols.
3. Caution: Sodium azide yields highly toxic hydrazoic acid under acidic conditions. Dilute azide compounds in running water before discarding to avoid accumulation of potentially explosive deposits in plumbing.